



FOY'S EPICS EVENTS

In this issue:

| | |
|---|-----------|
| EPICS VERSION 9.2.2 IS NOW AVAILABLE | 2 |
| RESERVE YOUR EUC 2016 ROOM..... | 8 |
| FOY INC HOLIDAY SCHEDULE..... | 8 |
| EPICS TRAINING OPPORTUNITIES..... | 9 |
| EPICS CUSTOMER LIST..... | 10 |



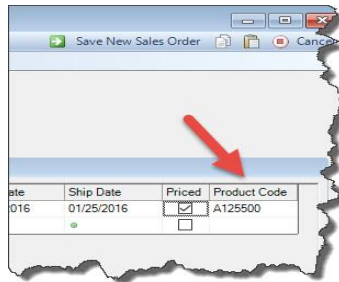
EPICS Version 9.2.2 is Now Available

This minor update is packed with formal wishlist items (9), enhancements, and many important fixes! You'll definitely want to look over the following descriptions to see all that has been included in this robust minor release. Be sure to update soon to take full advantage of these improvements.

Below is a detailed description of the **9.2.2** update:

* EPICS wishlist item

- The Product Code from the Customer Part Number screen is now visible at Order Entry in the Part dropdown menu.



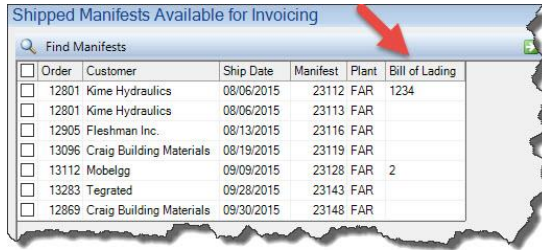
- The Alloy will now be displayed on the Shift Summary tab of the Post Production screen.

| Copy | Actvlt | Printvlt | % +/- | Prod Hr | Down Hr | Gross Lb | Net Lb | Good Pc | % Rec | Lb/Hr | Alloy |
|------|--------|----------|-------|---------|---------|----------|--------|---------|-------|-------|-------|
| 1 | .175 | .169 | 3.6 | .5 | | 920 | 771 | 266 | 83.76 | 1542 | 6063 |
| 1 | .175 | .169 | 3.6 | .25 | | 323 | 271 | 92 | 83.81 | 1084 | 6063 |
| 1 | 4.016 | 4.016 | | .13 | .05 | 94 | | | .00 | | 6063 |
| 2 | 3.396 | 4.396 | | .07 | .17 | 200 | | | .00 | | 6063 |
| 7 | .241 | .242 | -.2 | 1.12 | | 1242 | 863 | 311 | 69.49 | 773 | 6063 |
| 1 | 1.62 | 1.613 | .4 | 1.62 | | 4868 | 3207 | 165 | 65.87 | 1984 | 6063 |
| 1 | .922 | .92 | .2 | .37 | .25 | 700 | 575 | 78 | 82.13 | 1568 | 6063 |
| 1 | 4.669 | 4.678 | -.2 | .62 | .12 | 1350 | 600 | 16 | 44.45 | 973 | 6060 |
| 3 | 2.49 | 2.438 | 2.1 | .57 | | 1081 | 340 | 17 | 31.46 | 600 | 6060 |
| 1 | 1.022 | 1.022 | | .28 | | 297 | | | .00 | | 6063 |
| 1 | 4.28 | 4.282 | | .58 | .08 | 1963 | 1078 | 36 | 54.92 | 1848 | 6063 |
| 6 | .994 | 1.037 | -4.1 | 1.22 | | 2491 | 2061 | 174 | 82.74 | 1694 | 6063 |
| 4 | 1.035 | 1.037 | -.2 | 1.45 | | 2234 | 1665 | 135 | 74.54 | 1148 | 6063 |
| | | | | 8.77 | .67 | 17763 | 11431 | 1290 | 64.35 | 1304 | |

- The Date Packed will now be displayed for each Inventory Ticket on the Stock Tab of the Maintain Parts screen.

| Ticket Number | Stock Number | Length | Finish | Pieces | Pounds | Part | Part Cust Number | Date Packed |
|---------------|--------------|--------|--------|--------|--------|----------|------------------|-------------|
| 15575 | 15575 | 72" | 101 | 450 | 203 | .125 500 | 18000 | 11/02/2015 |

- The Bill of Lading number is now visible on the Find Manifests tab.



- *Separate permissions can now be assigned to each individual Lookup table. Expand **frmReference** on the Permissions screen to see all Lookup tables.

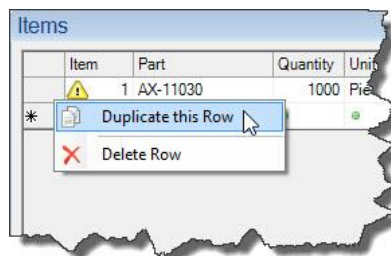
| frmReference | Lookup Table Maintenance | NONE | NONE | READ | WRITE | WRITE | WRITE | NONE | WRITE | WRITE |
|--------------|--------------------------|------|------|------|-------|-------|-------|------|-------|-------|
| frmReference | ActivityAction | | | | | | | | WRITE | WRITE |
| frmReference | ActivityCategory | | | | | | | | WRITE | WRITE |
| frmReference | ActivityStatus | | | | | | | | WRITE | WRITE |
| frmReference | Alloy | | | | | | | | READ | WRITE |
| frmReference | AlloyType | | | | | | | | READ | WRITE |
| frmReference | CAAction | | | | | | | | WRITE | WRITE |
| frmReference | CAComplaint | | | | | | | | WRITE | WRITE |
| frmReference | CARequest | | | | | | | | WRITE | WRITE |
| frmReference | CAStatus | | | | | | | | WRITE | WRITE |
| frmReference | CalendarEventCode | | | | | | | | WRITE | WRITE |
| frmReference | Cert | | | | | | | | WRITE | WRITE |
| frmReference | Country | | | | | | | | WRITE | WRITE |
| frmReference | CreditCode | | | | | | | | WRITE | WRITE |
| frmReference | CreditReasonCode | | | | | | | | WRITE | WRITE |
| frmReference | Currency | | | | | | | | WRITE | WRITE |
| frmReference | CustClass | | | | | | | | WRITE | WRITE |
| frmReference | DieOverCycle | | | | | | | | NONE | WRITE |

- *Production postings can now be searched on the Post Production screen by Die, Customer, or Part Number.

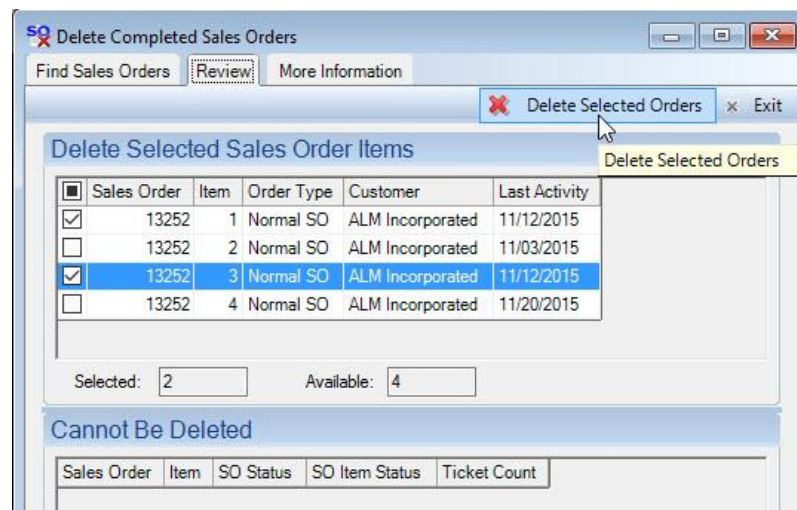
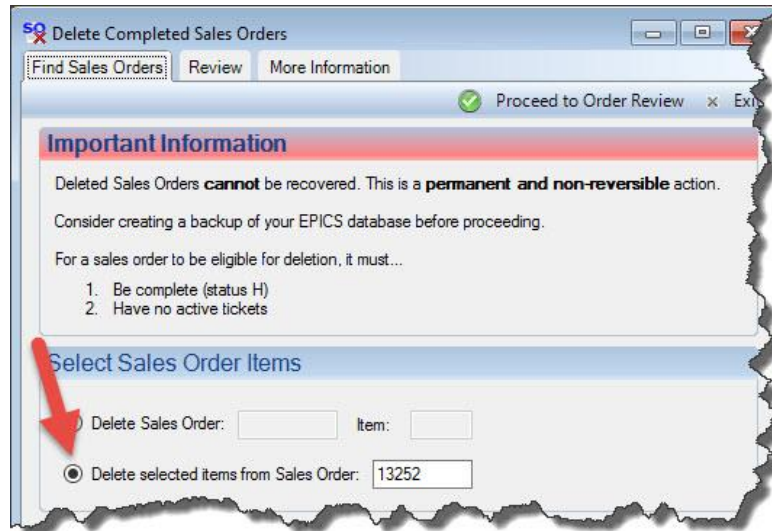
| | | | |
|--------------|----------------------|-------------|----------------------|
| SO - Item | <input type="text"/> | Customer | 18000 |
| Die | 02386 | Part | .125 .500 |
| Order Len | <input type="text"/> | Extrude Len | <input type="text"/> |
| Alloy/Temper | <input type="text"/> | Finish | <input type="text"/> |

Remember that you can search SO, SO Item, Lot in the 'Good Pieces' section.

- *Columns can now be sorted in the grid on the Die Oven Schedule screen.
- *Selected Items can now be duplicated at Order Entry. Right click on the left of the item row (in the grey area) to duplicate that item.

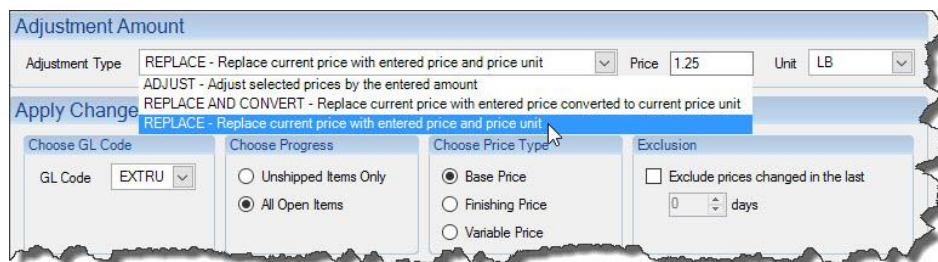


- *Selected Items within a Sales Order can be deleted using the Delete Sales Order screen.



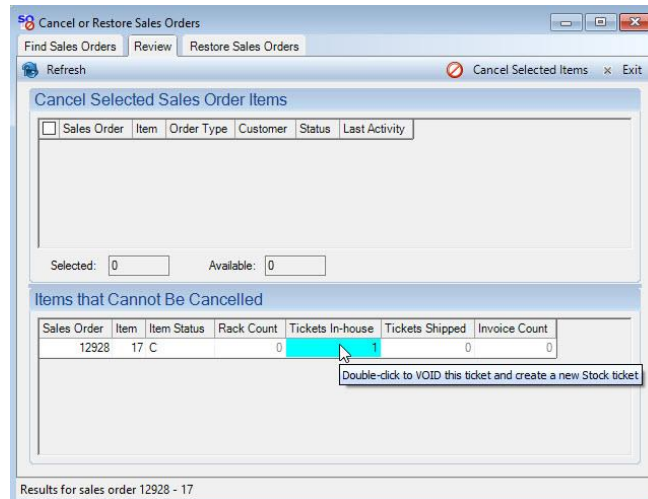
- *Prices can be replaced with a specific value on the Adjust Prices screen.

Prices can now be adjusted (same as before), replaced, or replaced but retain the original price conversion.



- *Copy and Paste right-click options have been added to data fields.

- *Tickets from a cancelled order can now be moved into Inventory when cancelling. Double-click the 'Tickets In-house' field to void the existing tickets and then create Stock Inventory tickets in their place.



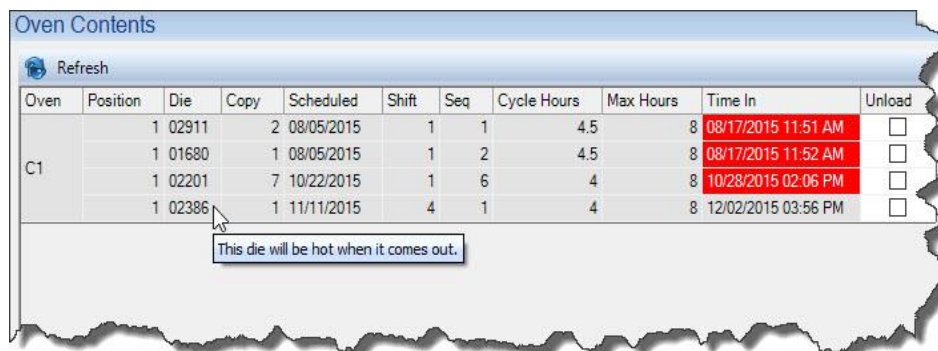
- *Quote prices can be mass-updated now the same as standard Sales Order prices. The 'Adjust Quote Prices' screen works just as the Adjust Sales Order Prices screen.



- Select multiple items at once on the Adjust Price screens by mouse clicking and dragging over multiple checkboxes at once to check or uncheck the items.
- Crystal XI-R2 Report Viewer support has been added to be used with reports with images to avoid memory issues with the current 13 viewer. This is to be used with image laden reports only and requires that the report file name contain "XI".

The Crystal XI-R2 runtime can be downloaded from the [Support - V8 Downloads](#) page of our website and must be installed on each workstation or terminal server that will be running reports with the XI-R2 viewer.

- Voiding Stock tickets will now require 'Allow Delete' permission on the Maintain Stock Inventory screen.
- Double-clicking on a specific department row on the 'Departments' tab of the Sales Order screen will now take you to view/edit the SO Item's production postings for that selected department.
- Tooltips have been added to explain why fields are color-coded throughout EPICS. Hover over the color-coded field to see the tool-tip.
- The configuration setting *gProdOverrideLotNumber* has been added to allow the manual editing of lot numbers on the Post Production screen.
- When receiving billet from a PO, do not allow Alloy, Alloy Type, Diameter, or Length to be changed.
- Add 'Save Data to File' button to Lookup Table screen (this duplicates the right-click function for the same operation).
- When planning workorders, show only die copies that are assigned to "All" or the currently selected plant.
- Display oven note on tooltip of the Die and Die Copy columns of the 'Oven Contents' tab on the Die Oven Schedule screen.



| Oven | Position | Die | Copy | Scheduled | Shift | Seq | Cycle Hours | Max Hours | Time In | Unload |
|------|----------|-------|------|------------|-------|-----|-------------|-----------|---------------------|--------------------------|
| C1 | 1 | 02911 | 2 | 08/05/2015 | 1 | 1 | 4.5 | 8 | 08/17/2015 11:51 AM | <input type="checkbox"/> |
| | 1 | 01680 | 1 | 08/05/2015 | 1 | 2 | 4.5 | 8 | 08/17/2015 11:52 AM | <input type="checkbox"/> |
| | 1 | 02201 | 7 | 10/22/2015 | 1 | 6 | 4 | 8 | 10/28/2015 02:06 PM | <input type="checkbox"/> |
| | 1 | 02386 | 1 | 11/11/2015 | 4 | 1 | 4 | 8 | 12/02/2015 03:56 PM | <input type="checkbox"/> |

- Display running total weight as tickets are scanned on Enhanced Shipping screen.
- Search the Configuration Screen for certain settings by keyword. A new Category called 'Search Results' has been added, so that when you type a key word in the 'Search' field on the top right hand side of the screen, you will be able to see all of the results within the Search Results Category. You can even change the settings while viewing them in the Search Results Category.

- FIX: When building a Master Workorder, allow items of the same length to be combined even if the lengths are stored in different formats.
- FIX: Use selected duplex settings when sending workorders directly to the printer.
- FIX: Correct total weight calculation on the Order Inquiry screen.
- FIX: Allow the editing of the User Field layout on the Print New Tickets screen.
- FIX: Include the 'Added Length' from the Customer Part screen when displaying the Total Price information on both the Order Entry and the Maintain Quotes screens.
- FIX: Allow adding reports to the Ribbon on Oracle database.
- FIX: Eliminate the Null Reference Exception when the Discounts and Surcharges button is pressed before the length is selected at Order Entry.
- FIX: Do not allow a ticket to be voided if it is locked for editing by another user.
- FIX: Enable auto-refresh for reports.
- FIX: Capture correct lot number at production when a user replaces one item with another on the Post Production screen.
- FIX: Allow normal right-click options on the Press Schedule tab of the Post Production screen.
- FIX: Correct the problem of updating field names for User Note fields on the Screen Layout Designer.
- FIX: Correct the issue when renaming unused fields on the Screen Layout Designer.

That's a big update for a minor release. Be sure to download soon!



Reserve Your EUC 2016 Room

Reserve your room

now! We are headed to the [Fort Lauderdale Marriott Pompano Beach Resort & Spa](#) in Pompano Beach, Florida.

You can reserve your room now! Make your [RESERVATION](#) soon as rooms will be limited and will probably go fast. If you prefer to call, *you can call (855) 954-4680 Monday-Friday between the hours of 9 AM – 5 PM EST.*



Use the phrase '**Foy EPICS User Conference**' when calling.

Rooms are held at the special conference rate of **\$219 per night** and are available **April 2nd – 7th**.

This is an absolutely beautiful resort right on Pompano Beach with excellent facilities. It's the perfect place to catch up with old friends, make new friends, and get all the important EPICS updates. So hurry and make your hotel [RESERVATION](#) now!

Foy Inc Holiday Schedule

The entire crew here at Foy Inc would like to wish you a Merry Christmas and a Happy New Year!

Our office will be **CLOSED: December 24th – January 1st**

We will re-open on January 4th.

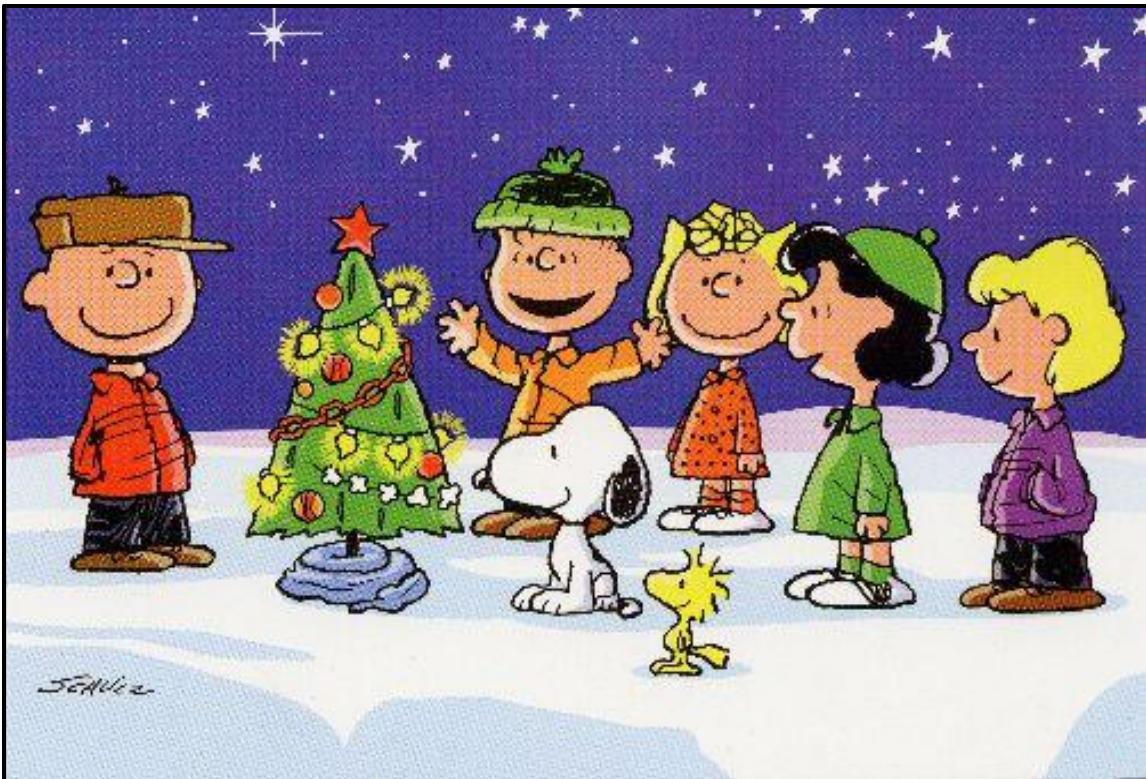
Merry
CHRISTMAS AND A HAPPY
New Year

EPICS Training Opportunities



Take advantage of the opportunity to have your EPICS Administrator and key users trained thoroughly on EPICS V9. We are ready for you to [upgrade](#) and send a crew for training!

EPICS classroom training sessions are held at the Foy Inc offices in Farmersville, Texas. The next available V9 classes are scheduled for **January 25-28**, **February 15-18**, and **April 18-21**. You can always view training class availability on our [Training Classes](#) webpage.



EPICS Customer List

*On any given day
EPICS is helping over 15,000 people
at around 100 extrusion plants around the world.*

Aocoa Extrusions – Niles, Michigan
 Aerolite Extrusion – Youngstown, Ohio
 Alenco – Bryan, Texas
 Almag Aluminum Inc. – Brampton, Ontario
 Almax Aluminium – Brisbane, Australia
 Altec – Jeffersonville, Indiana
 Aluminio de Baja California (ABC) – Tijuana, Mexico
 Aluminio de Centro América – San Salvador, El Salvador
 Aluminio Del Caribe– San Juan, Puerto Rico
 Aluminum Extrusions Inc – Senatobia, Miss.
 American Aluminum Extrusions – Canton, Ohio
 American Aluminum Extrusions – Beloit, WI
 American Aluminum Extrusions – Roscoe, Illinois
 Anaheim Extrusions (UMEX) – Anaheim, California
 APEL Extrusions Ltd. – Calgary, Alberta
 APEL Extrusions – Coburg, Oregon
 Apex Aluminum Extrusions – Langley, BC, Canada
 Arch Aluminum – Miami, Florida
 Architectural & Metal Systems – Cork, Ireland
 Ascend Custom Extrusions – Wylie, Texas
 Astro Shapes – Struthers, Ohio
 Benada Aluminum – Medley, Florida
 Bristol Aluminum – Levittown, Pennsylvania
 Briteline Extrusions – Summerville, S. Carolina
 BRT Extrusions – Niles, Ohio
 CanArt – Brampton, Ontario
 Capral Extrusions – Angaston, Australia
 Capral Extrusions – Penrith, Australia
 CanArt – Tecumseh, Ontario
 Central Aluminum – Columbus, Ohio
 Claridge Products – Harrison, Arkansas
 Crown Extrusions, Chaska, Minnesota
 Crystal Extrusion Systems – Union, Missouri
 DeeZee, Inc – Des Moines, Iowa
 Extrudex – Weston, Ontario
 Extrudex – Bernières, Quebec
 Extrudex – North Jackson, Ohio
 FISA – Guayaquil, Ecuador
 Frontier Aluminum – Corona, California
 G. James – Brisbane, Australia
 G. James – Sydney, Australia
 Hulamin – Pietermaritzburg, South Africa
 Hulamin – Capetown, South Africa
 Hulamin – Olifantsfontein, South Africa
 Independent Extrusions (INEX) – Hamilton, New Zealand
 Independent Extrusions (INEX) – Brisbane, Australia
 Independent Extrusions (INEX) – Melbourne, Australia
 International Extrusions – Garden City, Michigan
 International Extrusion Corp. (UMEX) – Waxahachie, Texas
 Jalex – Kingston, Jamaica
 Keymark Corporation – Fonda, New York
 Keymark Corporation – Lakeland, Florida
 Keymark Corporation – Orlando, Florida
 MI Metals, Inc - Smyrna, Tennessee
 MI Metals, Inc – Millersburg, Pennsylvania
 MI Metals, Inc – Oldsmar, Florida
 MI Metals, Inc – Prescott Valley, Arizona
 MI Windows and Doors – Carrollton, Texas
 Michigan Extruded Aluminum – Jackson, Michigan
 Midwest Aluminum – Withee, Wisconsin
 National Aluminum Ltd (NALCO)– Hamilton, New Zealand
 Nanshan America – Lafayette, Indiana
 Nigalex – Lagos, Nigeria
 Non-Ferrous Extrusion – Houston, Texas
 Oldcastle (Vista Wall Arch. Products) – Midway, Tennessee
 Oldcastle (Vista Wall Arch. Products) – Terrell, Texas
 Orrvilon (Holtec) – Orrville, Ohio
 Patrick Metals (UMEX) – Mishawaka, Indiana
 Pennex – Leetonia, Ohio
 Pennex – Wellsville, Pennsylvania
 Perfiles de Aluminio.– San Juan, Puerto Rico
 Postal Aluminum – Cassopolis, Michigan
 Press Metals – Cumming, Georgia
 Pries Enterprises – Independence, Iowa
 PT Alumindo Perkasa – Jakarta, Indonesia
 PT Indal – Surabaya, Indonesia
 Profile Extrusions – Rome, Georgia
 Profile (RJS Precision Ext.) – Phoenix, Arizona
 Schimmer Metal – Bangkok, Thailand
 Selaco Aluminium – Johar, Malaysia
 Service Center Metals – Prince George, Virginia
 Sierra Aluminum – Fontana, California
 Sierra Aluminum – Riverside, California
 Silver City Aluminum -- Taunton, Mass
 Spectra Aluminum – Bradford, Ontario
 Star Extruded Shapes, Canfield, Ohio
 Superior Extrusion – Gwinn, Michigan
 Superior Metal Shapes – Chino, California
 Tecnoglass – Barranquilla, Columbia
 Taber Extrusions – Gulfport, Mississippi
 Taber Extrusions – Russellville, Arkansas
 Tifton Extrusions – Tifton, Georgia
 Tri–City Extrusion – Bristol, Tennessee
 Tubelite – Reed City, Michigan
 Universal Molding (UMEX) – Downey, California
 Vitex – Franklin, New Hampshire
 Wakefield Engineering – Pelham, New Hampshire
 Western Extrusion – Carrollton, Texas
 Zarbana Industries – Columbiana, Ohio

Foy Inc

111 Farmersville Pkwy, Suite 100
 Farmersville, TX 75442
 Phone: 972-782-7282
 Fax: 972-782-7130

Web: www.foyinc.com
 General Information: info@foyinc.com
 Help: help@foyinc.com

Jim Foy: jim@foyinc.com
 John Stenger: john@foyinc.com
 Scott Wilson: scott@foyinc.com
 Jason Naff: jason@foyinc.com
 Stacy Foley: stacy@foyinc.com
 Mariah Zagorsky: mariah@foyinc.com
 Stephan Stenger: stephan@foyinc.com