



FOY'S EPICS EVENTS

In this issue:

9.4 MAJOR UPDATE DETAILS	2
EDI FEEDBACK.....	8
EUC 2017 REGISTRATION OPEN	9
FOY INC HOLIDAY SCHEDULE	10
EPICS TRAINING OPPORTUNITIES.....	10
EPICS CUSTOMER LIST.....	11



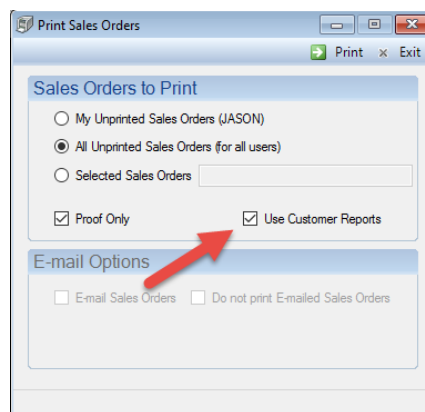
9.4 Major Update Details

This is a robust update including **9 Wishlist Items**, 3 of which are in the top 5.

We continue to work hard to turn your much-appreciated feedback into cutting edge solutions. These items are a result of our daily interaction with you, our valued customer!

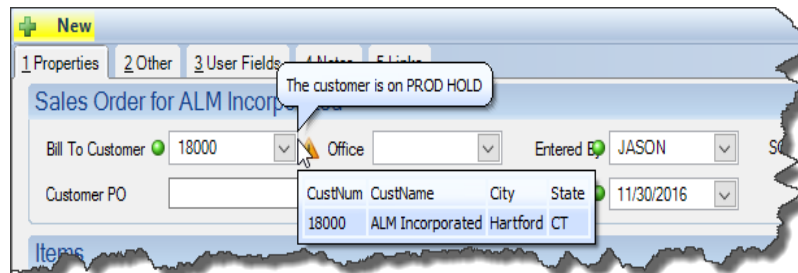
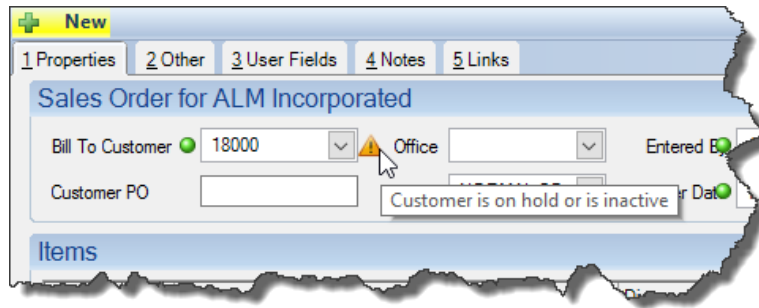
Below you will see the new features and fixes included in the download. Don't forget to use the **Major Update Procedures** available on the [V9 Downloads page](#) when updating.

- **Wishlist #1** - Prevent overlap of start/stop times.
 - New Production configuration setting: gPreventProdTimeOverlap
 - With this setting set to 'YES' (default) EPICS will prevent production postings from having overlapping start and stop times on the same department, machine, date, and shift.
 - It will also ensure that any posted downtime will fall within the start and stop time of the job.
- **Wishlist #3** – Add selection to the Printing dialogue for Acknowledgments, Manifest, and Invoices to use the customer's custom document (from "E-mail Documents" tab) whether Printing, Emailing, or Both.
 - Checking the box 'Use Customer Reports' will select the Customer's custom document, regardless of whether the document is being emailed and/or printed.
 - When selected, the custom document will now also be seen in the Crystal viewer in EPICS.



- **Wishlist #4** - Warn if a customer is on hold at Order Entry.

- Hover over the customer to see the hold type.



- **Wishlist #11** - Undo receiving of scrap from an Outside Processor.

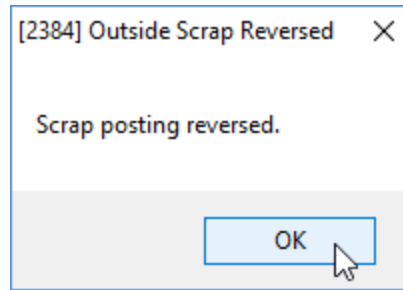
1. Once scrap is posted, open the SO Item Screen and select the Production Detail tab.
2. Right-click the row for the material you just scrapped and choose 'Undo'.

Production Detail

Date	Shift	Lot	Department	Machine	Pounds	Pieces	Hours	Code	Charge To	Run
03/16/2011	1		TO_NSA	1	133	512	0.00	PRD:0		
08/05/2016	1	1A11	PACK_TO	1	26	100	1.00	PRD:0		
08/05/2016	1	1A11	STOCK	1	26	100	1.00	PRD:0		
08/05/2016	1	*	TO_NSA	1	26	100	0.00	PRD:0		
11/08/2016	1		FM_NSA	1	6	25	0.00	SCR:1	FM_NSA	
11/08/2016	1		FM_NSA	1	0	0	0.00	SCR:2	FM_NSA	
11/30/2016	1		FM_NSA	1	2	10	0.00	SCR:2	FM_NSA	

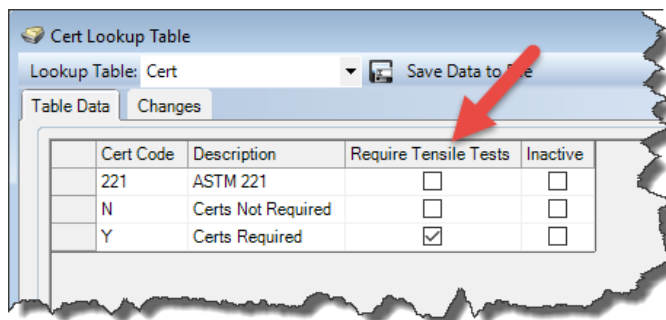
Undo Scrap

3. You will receive a confirmation and the material will be available to be received from the outside processor.

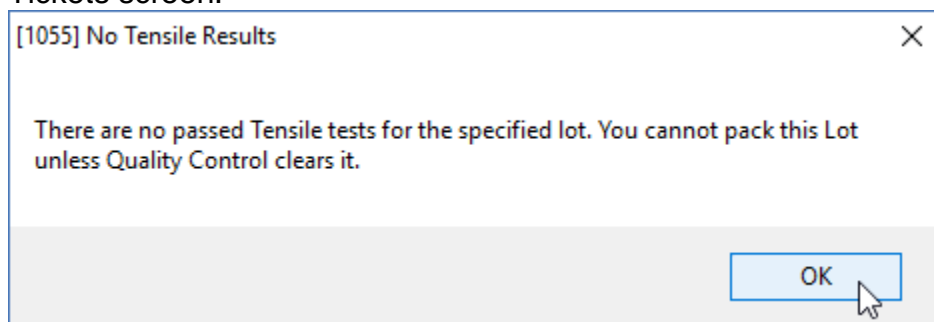


- **Wishlist #13** - Require tensile tests based on cert code selection.

- Set a Cert code to 'Require Tensile Tests'.

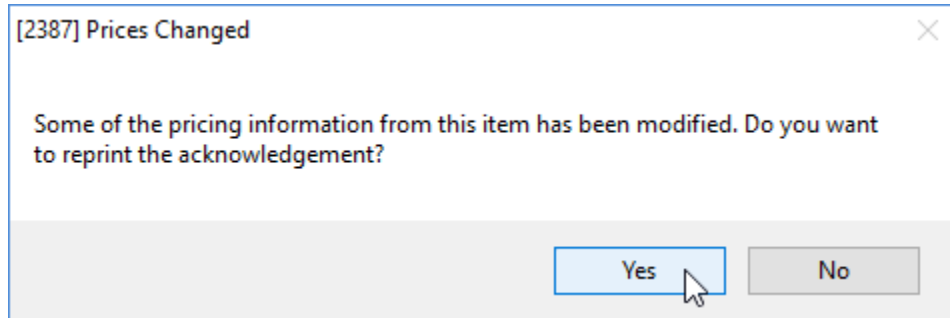


- When the Cert Code is present on an order, and no passing Tensile tests exist, a packing ticket cannot be created using the Print New Tickets screen.

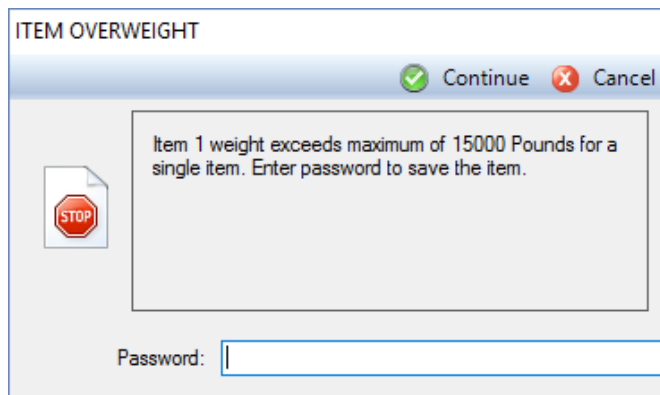


- **Wishlist #14** - Add Alloy Type to the 'Detail' section of the History tab on the Dies screen.
- **Wishlist #25** - Add SpecCode and Routing attributes to Notes and Alerts.
- **Wishlist #26** - Automate re-acknowledgement to customer after making pricing changes.
 - Make pricing changes on the SO Item screen or the Adjust SO Prices screen.

- When saving the changes, the following option will appear:



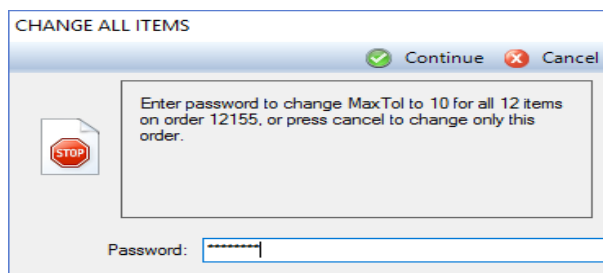
- Click 'Yes' and print the acknowledgment as usual. Or click 'NO', we don't care.
- **Wishlist #34** - Prevent order entry from posting a single item above a configurable weight limit.
 - Two new Order Entry configuration settings are used: gSolItemWtLimit and gSolItemWtPassword.
 - Set the maximum allowable Item weight with gSolItemWtLimit (the default is '0' without limit).
 - Optionally, enter a password on gSolItemWtPassword to allow a user to override the set maximum Item weight. If no password is entered, it will simply prevent the item from being saved with no override option.



- Created a button on the Customer Part screen linking to Prod Specs.
- When receiving Billet against purchase orders, require that the supplier, alloy and alloy type match, not just the cast number.

- This is an expansion of the existing Quality Control configuration setting: gCheckCastNumbers.
 - The option 'Complete' has been added, and will enforce that the supplier, alloy, and alloy type matches when selected.
- Enable scanner input for frmRackDepletion.
 - When scanning rack tags to start posting Packing production, and the initial rack scanned is depleted, a prompt appears asking the user to select a new rack for additional pieces. This dialogue box will now accept the secondary rack scan.
- Add DieCopy table to field chooser under 'Utilities' on the Press Schedule screen.
- Add a checkbox on the Die Copy screen to see 'Active Die Copies Only'.
- Allow grouping by Outside Processor on Standard Shipping screen.
 - By default the shipments are grouped by Customer.
 - To group by processor instead, set the new Production configuration setting gGroupShipmentsByProcessor to 'YES'.
- Assign a default rack number for posting scrap.
 - When the Production configuration setting gRequireRackForProduction is set to 'YES', then a rack is also required to post scrap.
 - The new Production configuration setting gDefaultScrapRack allows you to identify a default scrap rack ID so that it does not have to be typed in each time scrap is posted. When set, the default scrap rack out is auto-populated when posting scrap.
- Add context menus to the 'Import Orders' screen for Bill To Customer, Ship To Customer, Die Number and Part.
 - Now you can right-click on the above-mentioned fields and see the context menus once you have selected a .csv file and the Import Data grid is populated.
- Prevent Order Entry from changing a Part's Die Number, Alloy, or Temper during entry.

- This requires setting the new Order Entry configuration setting gOrderDataMustMatchPart to 'YES'.
- Add Die and SO Item Status to Racks, which can be seen from the Maintain Production Racks screen and can be used for reports.
- Automatically update the 'Times Nitrided' field on the 'Nitriding Info' tab of the Die Copy screen from 0 to 1 when setting the 'Last Date Nitrided'.
- When posting rework from the Print New Tickets screen, allow pieces to be pulled from multiple racks.
- Restrict users from printing packing tickets for racks not at their current plant.
 - This requires that the new Packing Tickets configuration setting gRestrictRacksByPlant is set to 'YES'.
- Prompt user to print the stock ticket after creating or editing a ticket using the Maintain Stock Inventory screen.
- Add Die Copy number to Corrective Action screen.
- Add WRITE permission setting to frmRack.
 - Write permission to frmRack will now be required to perform the right-click option of 'Mark Rack as Empty'.
- Eliminate several date warnings when selecting dates beyond one week.
- Improve the ability to post one 12-hour job in a shift.
- Include the option to hide the Group Tree on Workorder.
- Require a password for users to be able to make a change to all items on an order.
 - This requires a password to be entered in the new User Interface configuration setting gSOItemMultiChangePassword.



- Include drawing file links when copying Customer Parts to create new ones.
- Allow Cavity Codes to be refreshed on the Maintain Customer screen when added to the Die records.
- Allow sorting of linked documents by clicking column header.
- Fix: Close Order Entry Notes by hitting enter.
- Fix: Enable “Reload List” and “Edit Lookup Table” right-click options when using language other than English.
- Fix: Apply discounts and surcharges correctly for Kit and Assembly parts.
- Fix: Display all applicable Production Alerts when posting production by Rack ID.
- Fix: When creating a Sales Order from a Quote, carry the Quote Number and Quote Line Number over to each new Sales Order Item.
- Fix: Eliminate “Rack is in the XXXXX department” error when editing old Production Postings.

A blue rectangular button with rounded corners and a white border. The text "Update Now" is centered in white, bold, sans-serif font.

EDI Feedback

We are hearing that more and more of our customers are facing EDI (Electronic Data Interchange) requests. While we do not plan to handle EDI directly, we are actively seeking a solution for our customers.

Our plan is to gather as much information as possible. EDI covers a large scope of requirements and has many variables. We are currently speaking with a number of third party providers with the hopes of being able to work with and potentially recommend a provider. Our plan is to assist a provider with all of the information they would need to appropriately access and transmit required data.

Are you being asked about EDI by your customers? Have you already found a solution/provider? We'd be interested in hearing about your experience with this process.

Please send your feedback to info@foyinc.com. We would greatly appreciate it!

EUC 2017 Registration Open

Registration for EUC 2017 is now open! Feel free to [Register Now](#). Use the access code 'austin'. The registration and hotel cutoff date is **March 20th**.

A conference brochure and website will be available soon.

The conference will be held April 9th – 12th at the [Four Seasons](#) in Austin, Texas.



We're upping our Monday night game, so be sure to join us at the [Banger's Sausage House and Beer Garden](#) for an awesome experience.

Don't forget that you'll be within walking distance to many enjoyable locations, including the [Rainey Street District](#), one of the up-and-coming places to be in Austin.

Be sure to reserve your hotel room(s) now! Rooms are blocked off for April 8th – April 12th at the conference discount rate of \$259.00 per night. Again, the cutoff date is **March 20th** and rooms **will be limited**.

Call 1-512-685-8100 and mention '**EPICS User Conference 2017**'.

We can't wait to see you there! [Register Now](#). Access code 'austin'.

Foy Inc Holiday Schedule



From the entire Foy Inc team, we sincerely wish you a **Merry Christmas** and a **Happy New Year!**

Please note that we will be CLOSED:

Dec 24th - Jan 1st

We look forward to sharing a new year with you full of exciting developments.

Thank you again for being

such a valued customer. We literally couldn't do this without you!

EPICS Training Opportunities

Be sure to have your EPICS Administrator and key users trained thoroughly on EPICS V9.

EPICS classroom training sessions are held at the Foy Inc offices in Farmersville, Texas. The next available V9 classes are scheduled for ***January 16-19, February 20-23, and March 13-16**. You can always view training class availability and cost information on our [Training Classes](#) webpage.

If you are interested in a two-day Reports training class working with the EPICS database, please let us know by calling 972-782-7282 or emailing us at info@foyinc.com. We schedule the Reports classes on demand.

***Special Note** – January's class will include an additional day (optional) of reports training. This is a great opportunity to work directly with the EPICS database and custom report writing.

If you register for the 5 days instead of the normal 4, there will be a price adjustment, as follows:

1 or 2 People: \$1,237.00

3 or More: \$1,125.00

EPICS Customer List

*On any given day
EPICS is helping over 15,000 people
at 100 extrusion plants around the world.*

Aacoa Extrusions – Niles, Michigan
 Aerolite Extrusion – Youngstown, Ohio
 Almag Aluminum Inc. – Brampton, Ontario
 Almax Aluminium – Brisbane, Australia
 Altec – Jeffersonville, Indiana
 Aluminio de Baja California (ABC) – Tijuana, Mexico
 Aluminio de Centro América – San Salvador, El Salvador
 Aluminum Extrusions Inc – Senatobia, Miss.
 American Aluminum Extrusions – Canton, Ohio
 American Aluminum Extrusions – Beloit, WS
 American Aluminum Extrusions – Roscoe, Illinois
 Anaheim Extrusions (UMEX) – Anaheim, California
 APEL Extrusions Ltd. – Calgary, Alberta
 APEL Extrusions Ltd. – Coburg, Oregon
 Apex Aluminum Extrusions – Langley, BC, Canada
 Arch Aluminum – Miami, Florida
 Architectural & Metal Systems – Cork, Ireland
 Ascend Custom Extrusions – Wylie, Texas
 Astrex Inc – Lake Shore, Ontario
 Astro Shapes – Struthers, Ohio
 Benada Aluminum – Sanford, Florida
 Bristol Aluminum – Levittown, Pennsylvania
 Briteline Extrusions – Summerville, S. Carolina
 BRT Extrusions – Niles, Ohio
 CanArt – Brampton, Ontario
 CanArt – Windsor, Ontario
 Capral Extrusions – Angaston, Australia
 Capral Extrusions – Penrith, Australia
 Central Aluminum – Columbus, Ohio
 Claridge Products – Harrison, Arkansas
 Crown Extrusions - Chaska, Minnesota
 Gateway Extrusions, Ltd – Union, Missouri
 DeeZee, Inc – Des Moines, Iowa
 Extruders - a division of Tower – Wylie, Texas
 Extrudex – Weston, Ontario
 Extrudex – Bernières, Quebec
 Extrudex – North Jackson, Ohio
 FISA – Guayaquil, Ecuador
 Frontier Aluminum – Corona, California
 G. James – Brisbane, Australia
 G. James – Sydney, Australia
 Hulamin – Pietermaritzburg, South Africa
 Hulamin – Capetown, South Africa
 Hulamin – Olifantsfontein, South Africa
 Independent Extrusions (INEX) – Hamilton, New Zealand
 Independent Extrusions (INEX) – Brisbane, Australia
 Independent Extrusions (INEX) – Melbourne, Australia
 International Extrusions – Garden City, Michigan
 International Extrusions (UMEX) – Waxahachie, Texas
 Jalex – Kingston, Jamaica
 Keymark Corporation – Fonda, New York
 Keymark Corporation – Lakeland, Florida
 Keymark Corporation – Orlando, Florida
 MI Metals, Inc - Smyrna, Tennessee
 MI Metals, Inc – Millersburg, Pennsylvania
 MI Metals, Inc – Oldsmar, Florida
 MI Metals, Inc – Prescott Valley, Arizona
 MI Windows and Doors – Carrollton, Texas
 Michigan Extruded Aluminum – Jackson, Michigan
 Midwest Aluminum – Withee, Wisconsin
 Nanshan America – Lafayette, Indiana
 Nigalex – Lagos, Nigeria
 Non-Ferrous Extrusion – Houston, Texas
 Oldcastle Building Envelope – Midway, Tennessee
 Oldcastle Building Envelope – Terrell, Texas
 Orrvilon (Holtec) – Orrville, Ohio
 Patrick Metals (UMEX) – Mishawaka, Indiana
 Pennex – Leetonia, Ohio
 Pennex – Wellsville, Pennsylvania
 Perfiles de Aluminio.– San Juan, Puerto Rico
 Ply Gem Extrusion– Bryan, Texas
 Postle Aluminum – Cassopolis, Michigan
 Press Metals – Cumming, Georgia
 Pries Enterprises – Independence, Iowa
 PT Alumindo Perkasa – Jakarta, Indonesia
 PT Indal – Surabaya, Indonesia
 Profile Extrusions – Rome, Georgia
 Profile (RJS Precision Ext.) – Phoenix, Arizona
 Schimmer Metal – Bangkok, Thailand
 Selaco Aluminium – Johar, Malaysia
 Service Center Metals – Prince George, Virginia
 Shoals Extrusion – Florence, Alabama
 Sierra Aluminum – Fontana, California
 Sierra Aluminum – Riverside, California
 Silver City Aluminum -- Taunton, Mass
 Spectra Aluminum – Bradford, Ontario
 Star Extruded Shapes - Canfield, Ohio
 Sun Valley - Los Angeles, California
 Superior Extrusion – Gwinn, Michigan
 Superior Metal Shapes – Chino, California
 Tecnoglass – Barranquilla, Columbia
 Taber Extrusions – Gulfport, Mississippi
 Taber Extrusions – Russellville, Arkansas
 Tifton Aluminum Extrusions – Tifton, Georgia
 Tri–City Extrusion – Bristol, Tennessee
 Tubelite – Reed City, Michigan
 Universal Molding (UMEX) – Downey, California
 Vitex – Franklin, New Hampshire
 Wakefield-Vette – Pelham, New Hampshire
 Wakefield-Vette – Withee, Wisconsin
 Western Extrusion – Carrollton, Texas
 Zarbana Industries – Columbiana, Ohio

Foy Inc
111 Farmersville Pkwy, Suite 100
Farmersville, TX 75442
 Phone: 972-782-7282
 Fax: 972-782-7130

Web: www.foyinc.com
 General Information: info@foyinc.com

Help: help@foyinc.com

Jim Foy: jim@foyinc.com
 John Stenger: john@foyinc.com
 Scott Wilson: scott@foyinc.com
 Jason Naff: jason@foyinc.com
 Stacy Foley: stacy@foyinc.com
 Mariah Zagorsky: mariah@foyinc.com
 Stephan Stenger: stephan@foyinc.com