

Foy's EPICS Events

Extrusion Production Information and Control Systems

February 2009 * Volume 13, Issue 1.1



IN THIS ISSUE

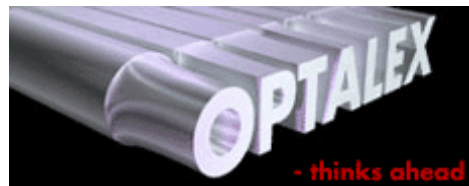
IN THIS ISSUE	1
CONFERENCE TO FOCUS ON COST SAVING FEATURES OF EPICS	2
EPICS V8.11 TO BE RELEASED NEXT WEEK	3
MULTI-PLANT SUPPORT ADDED TO EPICS	3
DIE "STANDARD COPY" REQUIREMENT ELIMINATED	4
TRAINING CLASS AVAILABLE IN FEBRUARY	5
IMPROVEMENTS MADE TO EPICS REPORTING	5
OTHER IMPROVEMENTS INCLUDED IN THE EPICS V8.11 UPDATE	6
OLD INVOICING SCREEN TO GO AWAY	7
EPICS CUSTOMER LIST	8

CONFERENCE TO FOCUS ON COST SAVING FEATURES OF EPICS

No question about it, the extrusion market is contracting. Extruders are looking for ways to stretch their dollars and make the most of existing systems. The upcoming EPICS User Conference will help you accomplish this goal. It will examine how you can use EPICS to reduce costs and maximize your plant's efficiency.

If you have not received a conference brochure, you can download it [here](#). And you can learn more about the conference, as well as register, on the [Foy Inc web site](#).

Robin Agnew, Chief Executive Officer of Optalex Ltd, will be a featured speaker at the conference. Optalex, an Ireland-based company, offers a closed-loop isothermal press control system that is used in several EPICS plants. Their system constantly monitors press parameters such as temperatures and speed, and modifies them to achieve optimum productivity. They have now developed a furnace control system that will work hand-in-hand with the press control system to help achieve true stability within the extrusion process.



Optalex's system depends on maintaining numerous parameters for each die copy, and then recording data for each billet extruded. They currently utilize data from the EPICS database, and we plan to work closely with them to allow an even closer interface between Optalex and EPICS.

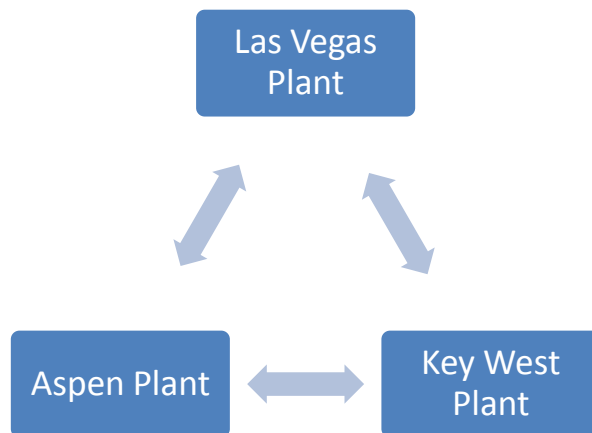
We hope you will join extruders from dozens of other plants on April 19-22 at the Hilton Sandestin Beach hotel in Destin, Florida. Keep watching the [Foy Inc web site](#) for developing information on the conference.

EPICS V8.11 TO BE RELEASED NEXT WEEK

The latest EPICS update, Version 8.11, will be available early next week on the Foy Inc web site. Each EPICS System Administrator will receive email containing a link to the update, along with information on how to download and install it.

MULTI-PLANT SUPPORT ADDED TO EPICS

The major enhancement included in the EPICS V8.11 update is the ability to handle multiple extrusion plants from a single database. While this enhancement is designed for companies with multiple extrusion operations, it also contains features that will benefit plants that have remote finishing or fabrication operations.



Multi-plant EPICS allows orders to be entered for any plant, and even to be split among several plants. Users can easily set EPICS to only show orders for their own plant, but can still have visibility of operations in other plants that are utilized by their own orders.

With the multi-plant feature, each extrusion plant can have its own billet inventory. Department names have been expanded, so that each plant can have its own list of departments – i.e., ‘EXTRUDE-LA’ and ‘EXTRUDE-NY’.

Several current EPICS users have remote finishing or fabrication plants. **Multi-plant EPICS** makes inter-plant transfers much easier for these companies. Using rack-tracking, racks of metal ready for transfer can easily be assigned to a truck, and a packing list (manifest) and bill of lading can be printed for each truck. Metal can be received at the remote facility with a single mouse click.

You should decide which of the following three options describe your plant's interest in using the new multi-plant features:

1. If you do not want to use any of the multi-plant features, then you will not need to make any changes. The multi-plant features will be invisible to your users.
2. If you want to use the “Inter-Plant Transfer” feature for your remote finishing or fab facility (but not use the multiple extrusion plant features) then you must contact Foy for a license for the remote plant.
3. If you want to use the multiple extrusion plants feature then you should call Foy Inc and discuss licensing as well as reporting requirements.

DIE "STANDARD COPY" REQUIREMENT ELIMINATED

EPICS has always required that one DieCopy be specified as the Standard Copy. This was required mainly so that a Sales Order Item could be assigned to a Press at order entry, and so that a preliminary Workorder could be prepared.

The EPICS V8.11 update eliminates the requirement of having a Standard Copy. Instead, a new table (DieStdData) has been added to store the necessary Standard Data. This means you no longer need to worry about the status of a Standard Copy. It also means that you can enter a Standard Data value for "ActWt" and EPICS will use that value in calculating the workorder.



You do not need to create Standard Data values for your existing dies -- the V8.11 Update Script will create the new table and will copy the needed data from your current Standard Copy to that table. Naturally, on new dies, you will need to enter Standard Data for at least the Press, Container, and Holes.

The Help file that comes with the EPICS V8.11 update will include more information about the new Standard Data feature.

TRAINING CLASS AVAILABLE IN FEBRUARY

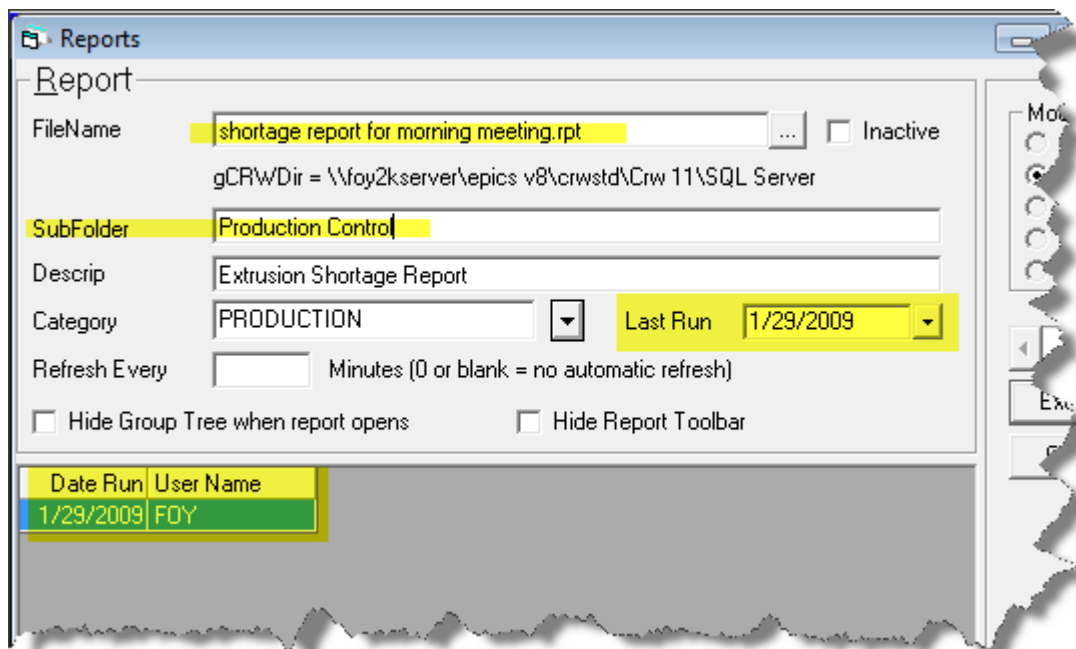
You still have time to reserve a spot at the February 16-19 EPICS Training Class. This class will walk you through all of the major EPICS features, as well as several minor features you probably didn't even know existed.

Another training session is scheduled for March 16-19. There will be no April training due to the EPICS User Conference. However, a day of intensive training on new EPICS features will be held in conjunction with the conference.

You can find detailed description of this user training session on the [Foy Inc web site](#), under "Training".

IMPROVEMENTS MADE TO EPICS REPORTING

The EPICS V8.11 update includes several reporting enhancements. If you have ever struggled with abbreviating a report name in order to meet EPICS' 20-character limit, you will be glad to know that names up to 40 characters in length may now be used.



Those of you with dozens and dozens of reports will appreciate the new ability to organize these reports into sub-folders.

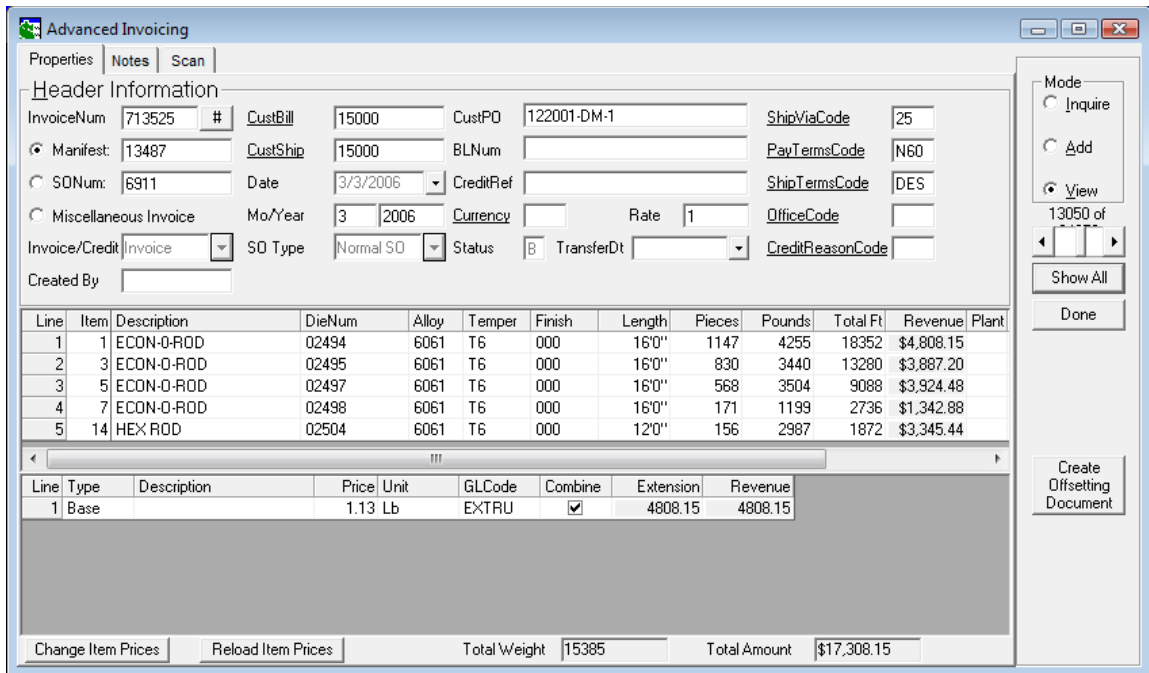
Lastly, if you have wondered if any of your reports are really being used, you now can see a history showing the User and Date Run, and can flag a report as being Inactive in order to remove it from the list of available reports.

OTHER IMPROVEMENTS INCLUDED IN THE EPICS V8.11 UPDATE

- Added a button to Maintain Departments, Machines, and Machine History screens
- Reports can now be assigned longer names – up to 40 characters instead of 20.
- Reports can now be organized into sub-folders, instead of having to all be in a single folder.
- A Report History is now maintained, showing the user name and date run for each report.
- An Inactive Flag has been added to each report.
- An Inactive flag has been added to GL Codes
- Reprinting packing tickets now asks for the number of copies to print
- If you use a mail program other than Outlook, you can use a new configuration setting to tell EPICS to bypass sending the document to Outlook.
- Packed and ready-to-ship bundles can now be assigned to stock and then pulled from stock as a bundle
- Ready-to-ship bundles in the stock inventory can also be broken and delivered to any department
- Tickets with a status of “F” and “P” can be voided and the pieces placed back into stock inventory.
- The Order Entry screen now has a “Reprice All Items” button
- Multiple files can be selected when using the CSV Order Entry feature
- CSV files can be moved to an archive directory after import

OLD INVOICING SCREEN TO GO AWAY

We will repeat the warning we gave in the last newsletter: the old Invoicing screen will be eliminated in the not-too-distant future (probably in the next update.) If you are still using this screen, we encourage you to move to the new Advanced Invoicing screen as soon as possible.



The Advanced Invoicing screen allows you to see all items on an invoice on one screen, and is similar in appearance and function to the Order Entry screen.

EPICS CUSTOMER LIST

**On any given day
EPICS is helping over 12,000 people
at over 80 extrusion plants around the world.**

Aacoa Extrusions – Niles, Michigan
Aerolite Extrusion – Youngstown, Ohio
Alenco – Bryan, Texas
Almag Aluminum Inc. – Brampton, Ontario
Altec (Alumnitec). – Jeffersonville, Indiana
Aluminio de Baja California (ABC) – Tijuana, Mexico
Aluminio de Centro America (ALDECA) – San Salvador, El Salvador
Aluminio Del Caribe– San Juan, Puerto Rico
Aluminum Extrusions Inc – Senatobia, Miss.
American Aluminum Extrusions of Ohio – Canton, Ohio
American Aluminum Extrusions of Wisconsin – Beloit, WI
APEL Extrusions Ltd. – Calgary, Alberta
Arch Aluminum – Miami, Florida
Astro Shapes – Struthers, Ohio
Atlantic Aluminum (Signature) – Lumber Bridge, N.C.
Benada Aluminum – Medley, Florida
Bristol Aluminum – Levittown, Pennsylvania
Briteline Extrusions – Summerville, S. Carolina
BRT Extrusions – Niles, Ohio
CanArt – Brampton, Ontario
CanArt – Tecumseh, Ontario
Central Aluminum – Columbus, Ohio
Crane Aluminium Extrusions – Angaston, Australia
Crane Aluminium Extrusions (Capral) – Penrith, Australia
Crown Extrusions, Chaska, Minnesota
Crystal Extrusion Systems – Union, Missouri
Empire Resources – Baltimore, Maryland
Extrudex – Weston, Ontario
Extrudex – Bernières, Quebec
Extrudex – North Jackson, Ohio
FISA – Guayaquil, Ecuador
Frontier Aluminum – Corona, California
Hualum. – Pietermaritzburg, South Africa
Hualum. – Capetown, South Africa
Hualum. – Olifantsfontein, South Africa
Independent Extrusions (INEX) – Hamilton, New Zealand
Independent Extrusions (INEX) – Melbourne, Australia
International Extrusion – Alhambra, California
International Extrusion – Waxahachie, Texas
International Extrusions – Garden City, Michigan
Jalex – Kingston, Jamaica
Keymark Corporation – Fonda, New York
Keymark Corporation – Lakeland, Florida
MI Metals, Inc - Smyrna, Tennessee
MI Metals, Inc – Millersburg, Pennsylvania
MI Metals, Inc – Oldsmar, Florida
MI Metals, Inc – Prescott Valley, Arizona
Mid-America Extrusions – Indianapolis, Indiana
Midwest Aluminum – Withee, Wisconsin
Non-Ferrous Extrusion – Houston, Texas
Patrick Metals – Mishawaka, Indiana
Pennex – Wellsville, Pennsylvania
Perfiles de Aluminio.– San Juan, Puerto Rico
Postal Aluminum – Cassopolis, Michigan
Postal Aluminum – Portland, Oregon
Pries Enterprises – Independence, Iowa
PT Alumindo Perkasa – Johar, Malaysia
PT Indal – Surabaya, Indonesia
Profab Industries – Canfield, Ohio
Profile Extrusions – Rome, Georgia
Profile (RJS Precision Ext.) – Phoenix, Arizona
Selaco Aluminium – Johar, Malaysia
Service Center Metals – Prince George, Virginia
Sierra Aluminum – Fontana, California
Silver City Aluminum -- Taunton, Mass
Sierra Aluminum – Riverside, California
Specialty Extrusion – Fullerton, California
Spectra Aluminum – Woodbridge, Ontario
Star Extruded Shapes, Canfield, Ohio
Superior Extrusion – Gwinn, Michigan
Sun Valley Extrusions – Los Angeles, California
Tecnoglass – Barranquilla, Columbia
Taber Extrusions – Gulfport, Mississippi
Taber Extrusions – Russellville, Arkansas
TAI-AO Aluminium – Taishan, Guang Dong, China
Temroc Metals (Signature) – Hamel, Minnesota
Tifton Extrusions – Tifton, Georgia
Tri-City Extrusion – Bristol, Tennessee
Tubelite – Reed City, Michigan
Vista Wall Arch. Products – Midway, Tennessee
Vista Wall Arch. Products – Terrell, Texas
Vitex – Franklin, New Hampshire
Wakefield Engineering – Pelham, New Hampshire
Western Extrusion – Carrollton, Texas
Zarbana Industries – Columbiana, Ohio

Foy Inc
111 Farmersville Parkway, Suite 100
Farmersville, TX 75442

Phone: 972-782-7282
Fax: 972-782-7130

Website: <http://www.foyinc.com>

Jim Foy jim@foyinc.com
John Stenger john@foyinc.com
Scott Wilson scott@foyinc.com
Howard Cantrell howard@foyinc.com
Stacy Coleman- stacy@foyinc.com
Foley
General mail info@foyinc.com
Help help@foyinc.com

To stop receiving EPICS-related email, send a blank email to unsubscribe@foyinc.com