



# *FOY'S EPICS EVENTS*

## **In this issue:**

<b>EPICS USER CONFERENCE 2023 – APRIL 16-19 .....</b>	<b>2</b>
<b>NEW QUALITY CHECK MODULE .....</b>	<b>3</b>
<b>EPICS UPDATE 9.16 .....</b>	<b>5</b>
<b>UPDATED STANDARD REPORTS .....</b>	<b>8</b>
<b>ONLINE AND IN-PERSON EPICS AND REPORT-WRITING TRAINING .....</b>	<b>9</b>
<b>EPICS CUSTOMER LIST .....</b>	<b>10</b>

## EPICS User Conference 2023 – April 16-19

Join us in San Antonio, Texas for the 25<sup>th</sup> annual EPICS User Conference. Home of the Alamo and the San Antonio Riverwalk, this is a truly unique city and a favorite meeting place for EPICS users. [Click this link to register now.](#)

Come and meet with your peers, exchange ideas, and become better at what you do. You will connect with people who do what you do and be your company's representative at one of the largest gatherings of aluminum extruders in North America.

Come meet the Foy Team and see all the new features added to EPICS in the past year. Bring your ideas and help make EPICS even better.



We will meet in the beautiful and historic [Omni La Mansion del Rio](#). Just steps away from the Riverwalk in the heart of the city. And remember the Alamo! It is just a short walk away. Come early or stay an extra day and take in the extraordinary history of the area.

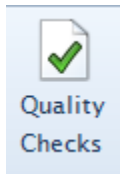
Our Monday evening event will be a cocktail cruise on the San Antonio River followed by dinner at the famously local and locally famous [Rio Rio Cantina](#) featuring fresh Tex Mex cuisine. We will dine on the rooftop patio overlooking the river. It's going to be pretty great.

See our website [www.foyinc.com](http://www.foyinc.com) for more information and to register.



We look forward to seeing you in San Antonio!

## New Quality Check Module

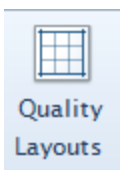


Released with EPICS V9.16, the Quality Check Module allows you to collect quality-related data at any stage of production. The data collected can consist of detailed measurements specific to a customer part or to individual dies, or they can be simple measurements collected for every lot or rack that passes through a department or machine. The familiar Screen Layout Designer tool is used to create as many different quality check layouts as you need. As you attach these layouts to your parts, dies, machines, and departments, you can make them optional, or you can make them required for every applicable lot or rack. For example, in the extrusion department you might want to capture dimensional readings for every lot; while in the aging department, you might want to capture webster readings for every rack in the oven. The configuration of every test in every department is completely under your control.

Once collected, quality check data for each sales order item can be quickly viewed by right-clicking on the item number. You can also view all quality checks collected for a die or part by right-clicking on the die or part number. Reports can be used to analyze quality checks over time based on any number of parameters.

Below is a brief explanation. Please see the 9.16 Help docs for full details. Also, please contact Foy Inc to request a 30-day free trial so you can fully evaluate the benefits of this new module.

### Quality Layouts



Start by creating a Quality Layout. In the layout, you describe its purpose, such as "2 dimensional checks and 2 webster checks after age". You can attach an "Info File" as a document or image that outlines or illustrates the requirements of the tests. You can also assign a Crystal report designed to analyze the test data.

### Design a Quality Layout

Then use the Screen Layout Designer to show fields for the data you collect. So, you might have two fields for Webster readings and two fields for Dimension checks. A new feature of update 9.16 is the ability to set minimum, maximum and default values for a field. This is especially helpful for posting Quality values. You can also now add standalone labels (without a data field) just for the purpose of giving information or directions on the screen.

### Assign Quality Layouts

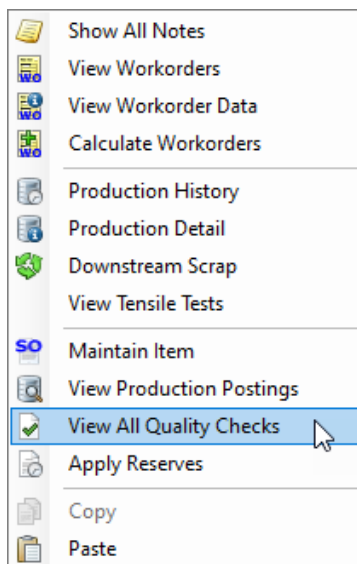
You have great flexibility in how and when the layout is used. Assign the layout to specific parts, to specific dies, or to a machine or department. Once the Quality Check module is installed, you will see a “Quality Check Options” tab on the Die screen, and a “QC Layout” column on the Dept Spec tab of the Customer Part screen. You will also see new fields on the Departments and Machines screen for assigning a layout.

### Collecting Quality Check Data

With your layout in place, you are ready to collect data. Quality check data is entered on the Production screen. You will see a new “QC” column for departments where a layout is assigned. You will also see a quality check button. Click the button or check the box to open the assigned layout and enter or edit Quality data. The QC checkbox indicates that quality check is complete.

Order	Item	Lot	Rack In	Rack Out	Length	Pieces	Lb	QC	Finish	Code
12869	3	1A12	1162	1162	120"	50	829	<input type="checkbox"/>	000	0
14464	1	3A11	1213	1213	192"	3	451	<input type="checkbox"/>	000	0
14546	1	1A12	1215	1215	192"	220	2006	<input type="checkbox"/>	000	0
14415	1	1A11	1217	1217	192"	395	480	<input type="checkbox"/>	000	0
14516	4	1B11	1224	1224	192"	5	64	<input checked="" type="checkbox"/>	000	0
14458	1	1A11	1217	1562	192"	5	6	<input type="checkbox"/>	000	294

### Viewing Quality Checks



From the Production screen, click the QC checkbox or button to view your collected data.

On any screen containing a sales order item number, right-click on the item number to view all quality checks collected for that item.

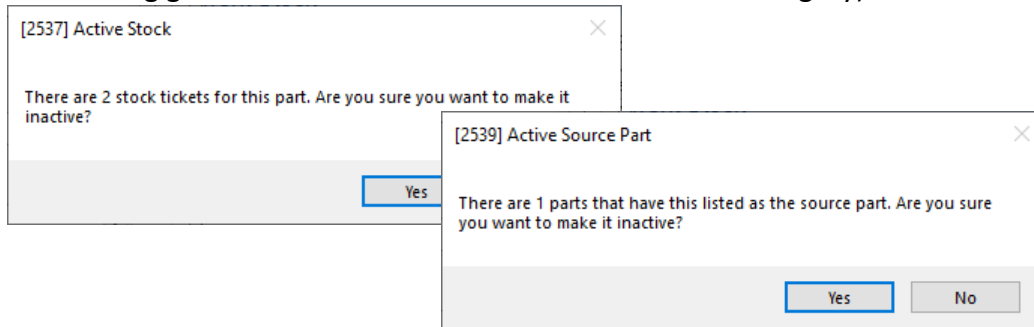
On any screen containing a die or part number, right-click on the die or part number to view all quality checks collected for that die or part.

You can also open the Quality Checks screen directly and use its built-in “Find” or “Advanced Find” functionality on the “Attributes” tab to narrow down your search to a specified date range. If you have assigned a report to the layout, you can also run the report from the Quality Checks screen.

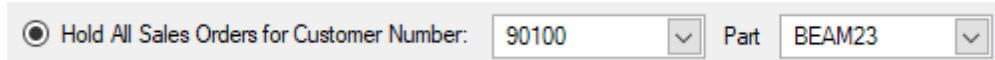
## EPICS Update 9.16

This is a rather massive update of 55 items with 7 wishlist items, including 5 of the top-ten, 16 new features and enhancements, 7 new configuration settings, and 29 fixes. This update also introduces the [Quality Check Module](#). Below is a list of the items with a brief explanation of some but be sure to see the 9.16 Help docs for a fuller explanation of each.

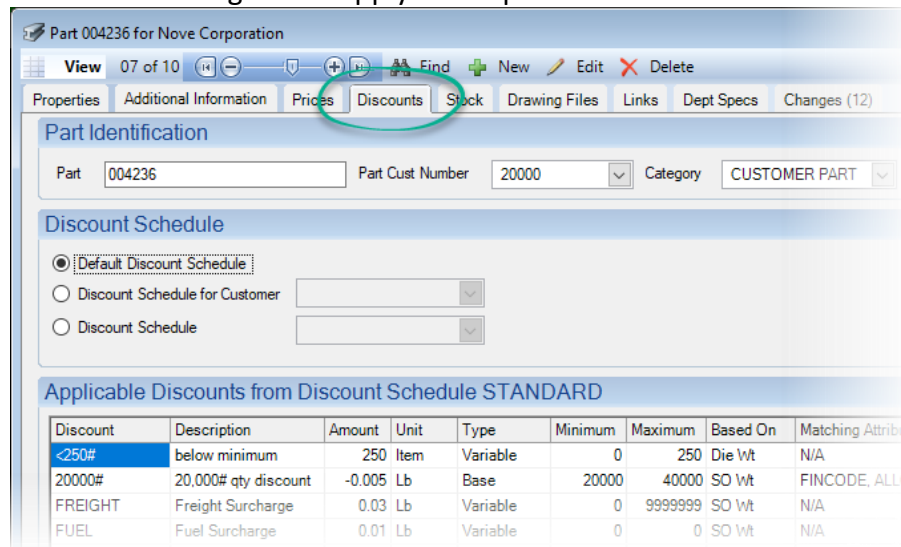
- 2022 #3 – Do not allow a customer part to be deactivated if it is used as the source part of another part or if there is any stock of that part in inventory (uses new setting gEnableInactivePartCheck in the Production category)



- 2022 #5 – Allow plant holds to be applied to all items for a selected part number



- 2022 #6 – On the Receive from Outside Processor screen, show the total weight of all items at the outside processor.
- 2022 #7 – Add a new Discounts tab to the Customer Parts screen that shows all discounts or surcharges that apply to the part

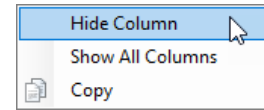


- 2022 #8 – Add the DieCopy table to the Field Chooser of the Die Oven Schedule screen so that die location and other copy-specific properties can be displayed

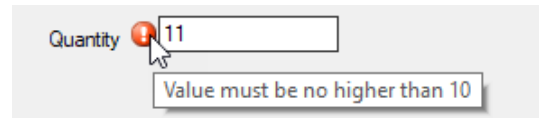
- 2022 #14 – Add a change log entry to the affected sales order item any time an override password is entered by production or packing to exceed the configured tolerances

Date/Time	User ID	Column Changed	Old Value	New Value	Long Description
02/07/2023 09:01 AM	SCOTT	MaxTol			Override password used to pack beyond tolerance

- 2021 #27 – On the “Show all rows in a grid” screen, add a right-click option to hide columns and save only visible rows/columns when exporting to a file.
- EPICS [Quality Check Module](#) now available
- Add a right-click "Links..." menu to Dies, Copies, Parts, SO, SOItem, and Cust to easily view all linked files attached to the object



- Allow an image file to be attached to any Note or Alert for easy display (uses a new config setting: gNoteAlertImagePath)
- On the Screen Layout Designer, allow any numeric field to be assigned a minimum & maximum value and allow any text or numeric field to be assigned a default value.

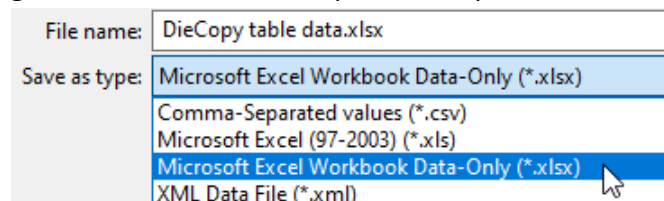


- Include status 'F' tickets on Physical Inventory Worksheet if gPhysInvenIncludeFilledTickets = YES
- Save Butt and Runout with extrusion production postings if they are entered instead of a sample weight.
- When adding a new ChemComp record, allow the user to select a different alloy type from ChemCompLimits if the specified type does not exist
- When any lookup table row is made inactive, continue to display that value on history screens and elsewhere (for example, inactive scrap codes will no longer appear as blank values and all cast numbers, including inactive casts, will display when viewing old billet receivers)
- Add ReqDtCode to the list of fields that can be changed for all items on an order at once
- Corrective Action Module: Add a new config setting, gCAMultiChangeEnabled, to permit disabling the option to change all Corrective Action items simultaneously and add gCAMultiChangePassword, which works similarly to gSOItemMultiChangePassword
- Add a note to the change log of each copy when nitriding is posted.

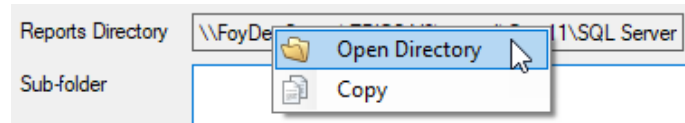
Die Copy Change Log

Date/Time	User ID	Column Changed	Old Value	New Value	Long Description
02/07/2023 09:48 AM	SCOTT	TimesHard	1	2	Die 00007 Copy 1 was nitrided using plan HOLLOW

- When exporting data to a file, add the option to export to .XLSX format.



- On the Press and Department Schedule, add the ability to choose a starting sequence number when rescheduling items
- Enhanced Finishing Module: Replace the Location textbox with a combo box linked to the LocationCode lookup table
- Multi-Plant: Added highlighting and a warning when building an interplant transfer if a selected rack is on hold
- On the calendar screen, when selecting an event that is part of a set of recurring events, others in the same set will be identified by a black border
- Add a Links tab to Production Specs to allow attachment of related documents
- On the Report Maintenance screen, add the ability to open the Reports directory by right-clicking on it if the user has WRITE permission to the screen



## Fixes

- Update the stock ticket and the item's remaining pc and wt correctly when filling an accessory, kit, or assembly item from stock
- When entering an order for accessories, kits, or assemblies, alert the user about matching stock based only on the part number
- Update the die oven schedule sequence when the press schedule is re-sequenced
- On the Department Schedule, calculate remaining hours based only on the selected machine and eliminate duplicated items caused by multiple machine specs defined on the part
- On the Production screen, display the correct Production Specs for die trials
- Improve backlog calculations for cutback items filled from stock
- Use appropriate perimeter to correctly calculate remaining and available square feet (or meters) on the department schedule
- Eliminate unhandled exceptions when importing new sales orders for a part with no Routing assigned
- When using filters on the Press or Department Schedule screen, only include visible rows in the count for subtotals and only select visible rows when dragging to select multiple rows
- Opening the CSV import screen by clicking the Import button on frmChemComp only allows import into ChemComp table
- Update backlog and shortages correctly when scrapping pieces going to an outside processor when PACK\_TO is not in the routing
- Update the billet count on the preliminary workorder correctly when making changes to an item that has not yet had its workorder planned
- Correct several screen labels and tooltips that were not translating correctly when using a custom language

- Allow a user to edit an extrusion production posting if the user has WRITE permission to SAW POSTING but lacks POSTING permission.
- On Post Shipments screen, allow Net Wt, Ordered Wt, and Remain Wt columns to be rearranged on the Pending Shipments tab
- On the Paint Consumables tab of the Production screen, display PaintInvenID even if the container is empty
- Correct the tab order on the User Field Tab of the Maintain Dies screen
- Update the Date Received field correctly on IPT transfer screen
- On EPICS Configuration screen, eliminate unhandled exceptions when changing gUserNotifiedOnWorkorderChanged
- On the Screen Layout Designer, remove the ability to set a user list for a UserDecimal field.
- Die Correction Module: Hide Die Correctors from the Employee dropdown if they don't have a DeptGroup set
- Automatically truncate email subject lines longer than 250 characters when emailing documents
- On the Customer Parts screen, allow adding Department Specs for departments in the Stock Routing even when gAllowNonRoutingSpecs is set to NO
- On the Production screen, eliminate unhandled exceptions when selecting Scrap Codes to inquire on
- Eliminate unhandled exceptions when removing a large number of items from the press schedule at once
- Enhanced Shipping: Prevent the same item from being added to a picklist twice.
- On the Shortages tab, always consider each item's ordered unit when determining whether its work orders have open weight or pieces remaining
- When filling the press schedule screen with open items, always take each item's ordered unit into account when determining whether its work orders are complete or not
- Prevent users from deleting the ACCESSORY die
- On the Invoice screen, hide the top toolbar when the Find Manifests tab is selected

## Updated Standard Reports

Two commonly used standard reports have recently been updated. They are the Work In Process report (WorkInProgress.rpt) and the Billet Requirements report (Bilreq.rpt). The new versions are available for [download from the Foy Inc website](#).

Work in Process – The new report (WIP\_V9.rpt) is based on real-time contents of racks ready for production. The report data now matches data seen on the Available Racks tab of the Backlog screen.



Billet Requirements – It had been reported that, in some cases, not all billet PO records were showing on the report. The totals were correct, but some PO detail was missing. The problem was traced to the use of a legacy method for date-time conversion. If you download this report, you will download a .zip file containing the report and a database view (BilletReqView.sql). It is recommended that you run this view script, even if the view is already installed in your EPICS database. The view was updated several years ago, so there is a chance that you are not running the current view. This is an opportunity to make sure it is up to date.

## Online and In-person EPICS and Report-Writing Training

EPICS User Training is available in-person at our training facility in Farmersville, Texas as well as online. In this four-day class, trainees work through the entire EPICS interface. The next in-person classes meet February 20 – 23 and May 22 – 25. Online classes are scheduled for March 20 – 23 and June 19 – 22.

Knowledge  
is  
power!



For online classes, a good internet connection and dual monitors are essential. One monitor is needed for watching the instructor's screen and another for running EPICS. This could be individuals in their homes or offices, or it could be several people in a conference room with a single large screen with speakers to see and hear the instructor and with individual PCs for each trainee. Trainees will connect via VPN to a training database on a Foy Inc server.

This is a great opportunity to provide training to your administrators and key users. Training is valuable not only for new users, but also as a refresher for long-time EPICS users. Much has been added to EPICS V9 in the past few years, and there are probably other things that have been forgotten. Take this opportunity to see the full scope of what EPICS has to offer.

Also available is Report Writing training. This is a novice-level class which uses Crystal Reports and the EPICS database to teach how to create and edit reports used in EPICS. Currently, there is still availability in an online class scheduled for April 3 – 4. [Please see the Foy Inc website for details.](#)

If you are interested in EPICS User Training or in Report Writing Training, please call us at 972-782-7282 or email us at [info@foyinc.com](mailto:info@foyinc.com).

## EPICS Customer List

*On any given day EPICS is helping more than 15,000 people at 100+ extrusion plants around the world.*

Almag Aluminum Inc. – Brampton, Ontario  
 Almag Aluminum Inc. – Florence, Alabama  
 Almax Aluminium – Brisbane, Australia  
 Altec – Jeffersonville, Indiana  
 Altus NZ – Hamilton, New Zealand  
 Aluminio de Baja California (ABC) – Tijuana, Mexico  
 Aluminios de Puerto Rico – Humacao, Puerto Rico  
 Aluminio de Centro América – San Salvador, El Salvador  
 Aluminum Extrusions Inc – Senatobia, Miss.  
 Aluminum Insights – Goshen, Indiana  
 American Aluminum Extrusions – Canton, Ohio  
 American Aluminum Extrusions – Beloit, WI  
 American Aluminum Extrusions – Roscoe, Illinois  
 Anaheim Extrusions (UMEX) – Anaheim, California  
 APEL Extrusions Ltd. – Calgary, Alberta  
 APEL Extrusions Ltd. – Coburg, Oregon  
 APEL Extrusions Ltd. – Phoenix, Arizona  
 Apex Aluminum Extrusions – Langley, BC, Canada  
 Architectural & Metal Systems – Cork, Ireland  
 Astrex Inc – Lake Shore, Ontario  
 Benada Aluminum – Sanford, Florida  
 Bonnell Aluminum – Niles, Michigan  
 Bristol Aluminum – Levittown, Pennsylvania  
 Briteline Extrusions – Summerville, S. Carolina  
 BRT Extrusions – Niles, Ohio  
 CanArt – Brampton, Ontario  
 CanArt – Windsor, Ontario  
 Capral Extrusions – Angaston, Australia  
 Capral Extrusions – Penrith, Australia  
 Claridge Products – Harrison, Arkansas  
 Crown Extrusions – Chaska, Minnesota  
 DeeZee, Inc – Des Moines, Iowa  
 Dependable Anodizing – Markham, Ontario  
 Extrudex – Weston, Ontario  
 Extrudex – Bernières, Quebec  
 Extrudex – North Jackson, Ohio  
 Extrum – Chaloma, Honduras  
 Extrusions, Inc – Fort Scott, Kansas  
 FISA – Guayaquil, Ecuador  
 G. James – Brisbane, Australia  
 G. James – Sydney, Australia  
 Gateway Extrusions, Ltd – Union, Missouri  
 Hulamin – Pietermaritzburg, South Africa  
 Hulamin – Capetown, South Africa  
 Hulamin – Olifantsfontein, South Africa  
 Independent Extrusions (INEX) – Hamilton, New Zealand  
 Independent Extrusions (INEX) – Brisbane, Australia  
 Independent Extrusions (INEX) – Melbourne, Australia  
 International Extrusions – Garden City, Michigan  
 International Extrusions (UMEX) – Waxahachie, Texas  
 Iowa Aluminum – Albia, Iowa  
 Jordan Aluminum Company – Memphis, Tennessee  
 Keymark Corporation – Fonda, New York  
 Keymark Corporation – Lakeland, Florida  
 Keymark Corporation – Orlando, Florida  
 Mayne Inc. – Langley, British Columbia  
 Merit Aluminum – Corona, California  
 MI Metals, Inc. – Millen, Georgia  
 MI Metals, Inc – Oldsmar, Florida  
 MI Metals, Inc – Prescott Valley, Arizona  
 MI Metals, Inc - Smyrna, Tennessee  
 MI Windows and Doors – Carrollton, Texas  
 Michigan Extruded Aluminum – Jackson, Michigan  
 Midwest Aluminum – Withee, Wisconsin  
 Mountain Ridge Metals – Millersburg, Pennsylvania  
 Nanshan America – Lafayette, Indiana  
 Nigalex – Lagos, Nigeria  
 Non-Ferrous Extrusion – Houston, Texas  
 Oldcastle Building Envelope – Midway, Tennessee  
 Oldcastle Building Envelope – Terrell, Texas  
 Orrvilon (Holtec) – Orrville, Ohio  
 Paramount Extrusions Company – Paramount, California  
 Patrick Metals (UMEX) – Mishawaka, Indiana  
 Peerless Products – Fort Scott, Kansas  
 Pennex – Leetonia, Ohio  
 Pennex – Wellsville, Pennsylvania  
 Perfiles de Aluminio – San Juan, Puerto Rico  
 Ply Gem Extrusion – Bryan, Texas  
 Postle Aluminum – Cassopolis, Michigan  
 Press Metals – Cumming, Georgia  
 Pries Enterprises – Independence, Iowa  
 PT Alumindo Perkasa – Jakarta, Indonesia  
 PT Indal – Surabaya, Indonesia  
 Profile Extrusions – Rome, Georgia  
 Profile (RJS Precision Ext.) – Phoenix, Arizona  
 Samwoo America – Tijuana, Mexico  
 Schimmer Metal – Bangkok, Thailand  
 Selaco Aluminium – Johar, Malaysia  
 Service Center Metals – Prince George, Virginia  
 Sierra Aluminum – Fontana, California  
 Sierra Aluminum – Riverside, California  
 Silver City Aluminum -- Taunton, Mass  
 Spectra Aluminum – Bradford, Ontario  
 Star Extruded Shapes – Canfield, Ohio  
 Sun Valley - Los Angeles, California  
 Superior Extrusion – Gwinn, Michigan  
 Superior Metal Shapes – Chino, California  
 Taber Extrusions – Gulfport, Mississippi  
 Taber Extrusions – Russellville, Arkansas  
 Tecnoglass – Barranquilla, Columbia  
 Tower Extrusions – Hensley – Wylie, Texas  
 Tower Extrusions – Martinez – Wylie, Texas  
 Tifton Aluminum Extrusions – Tifton, Georgia  
 Tri-City Extrusion – Bristol, Tennessee  
 Tubelite – Reed City, Michigan  
 Universal Molding (UMEX) – Downey, California  
 Veer Aluminium – Olifanstfontein, South Africa  
 Vitex – Franklin, New Hampshire  
 Wakefield-Vette – Pelham, New Hampshire  
 Wakefield-Vette – Withee, Wisconsin  
 Western Extrusion – Carrollton, Texas  
 Wolverine Tube Inc – Decatur, Alabama  
 Unique American Aluminum – Middlesex, New Jersey  
 Zarbana Industries – Columbiana, Ohio

---

### Foy Inc

111 Farmersville Pkwy, Suite 100

Farmersville, TX 75442

Phone: 972-782-7282

[www.foyinc.com](http://www.foyinc.com)

General Information:

[info@foyinc.com](mailto:info@foyinc.com)

Help:

Stacy Foley:

Jim Foy:

John Stenger:

Stephan Stenger:

Scott Wilson:

Mariah Zagorsky:

[help@foyinc.com](mailto:help@foyinc.com)

[stacy@foyinc.com](mailto:stacy@foyinc.com)

[jim@foyinc.com](mailto:jim@foyinc.com)

[john@foyinc.com](mailto:john@foyinc.com)

[stephan@foyinc.com](mailto:stephan@foyinc.com)

[scott@foyinc.com](mailto:scott@foyinc.com)

[mariah@foyinc.com](mailto:mariah@foyinc.com)