



FOY'S EPICS EVENTS

In this issue:

2018 WISHLIST RESULTS	1
EPICS 9.8 MAJOR UPDATE AVAILABLE	5
NEW DIE CORRECTION MODULE	11
EUC 2019	15
NEW CUSTOMERS.....	16
EPICS TRAINING OPPORTUNITIES.....	17
EPICS CUSTOMER LIST.....	18



WISHLIST !!

2018 Wishlist Results



It has been a very busy year at Foy Inc! Grab a cup of coffee and relax, this is a big newsletter to get you caught up! To start, we had a very successful EPICS User Conference this year in Las Vegas, Nevada. Thank you for all of those who attended! The wishlist below is a result of the requests submitted during that conference. Once we received the wishlist items, we distributed the list so that all customers could vote on their top items. The results are listed below. Later in the newsletter, you will find that we have already incorporated several of the higher ranked wishlist items into EPICS 9.8, which is available for download now.

With over half of the EPICS User License-holders voting again this year, we can't thank you enough for your participation. As you know, customer relations and customer service are our highest priorities at Foy Inc. We meticulously maintain the wishlist each year as a result of that priority. EPICS is the world's most popular extrusion software, and you have helped to keep it that way!

2018 EPICS Wishlist

As determined by a vote of EPICS users

Rank	Score	Item
1	100	Allow multiple production lots of the same sales order item to be added to the same packing ticket
2	94	When reallocating pieces from one item to another, add a line to the change log for both items
3	82	Add a "Remaining Pieces" column to the department summary grid in bottom-left corner of production screen
4	81	When placing an item on plant hold or hovering over the plant hold field on the sales orders screen, display a list of departments affected by the selected hold
5	74	Allow both Read and Write access to the press schedule and department schedule screens
6	74	Add shipping tolerance (min, max, unit) to the customer part screen
7	73	Improve handling of kits and assemblies to more easily create required extrusion orders and link them to the finished kit.
8	69	Allow voiding of tickets to be reversible
9	68	Allow the selection of required fields on production screen to be department-specific
10	68	Allow a posted sales order item to be quickly split into multiple items with different ship dates

11	67	Add a "Proforma invoice calculator" to display total extended price of a sales order in advance of shipment
12	64	Prevent shipments to an outside processor for items that are on production hold
13	61	Add a "Search" feature to the user permissions screen
14	59	Add configuration setting to prevent order entry from changing any data values that came from the customer part (e.g. die, length, finish, pricing, etc.)
15	58	Add a change log to the sales order entry screen (and retain these changes in the sales order change log after the order is posted)
16	58	Add a change log to the EPICS Configuration screen
17	57	Display the original source rack id(s) for each stock ticket on the Maintain Stock Inventory and Maintain Tickets screens
18	56	Auto-generate new work orders for lots that are closed but incomplete at the press
19	55	Add a new location field to the ticket (and stock inventory) table that is linked to the location lookup table and display this location on the pull from stock screen
20	55	Add a configuration setting to prevent the invoicing screen from closing any item that has remaining tickets or racks
21	55	When posting production, restrict the user's ability to change the next sequential department for each rack unless rework is required
22	53	Allow a new rack tag to be printed when reallocating pieces from one item to another
23	51	Allow customer credit limit to be used to prevent posting new sales orders once limit is reached (configurable with password override)
24	51	Add a field chooser to the backlog screen and the maintain racks screen
25	47	Add a change log for billet receipts
26	46	Display each item's packing code on the production screen
27	44	On Sales Orders screen, allow the work order range (min, max, unit) to be changed for all items on an order
28	43	Add a new intra-plant tracking screen to easily move racks and tickets from one location or department to another with full barcode scanning support
29	42	Add a configuration setting to specify rack quantity tolerance in pieces (companion to gRackProdWtTol)
30	40	For acknowledgements, manifests, invoices, and quotes, allow each customer to be configured either to email separate PDF files for each document or to combine multiple documents into a single PDF
31	40	Add a configuration setting that requires the user to select a lot number when posting tensile tests (no default lot selected)
32	38	Add user fields to the Reserves screen
33	38	Provide separate permissions to void newly packed tickets (status A, B, I) vs closed or in-process tickets (status F, O, P, R, S)
34	38	Add "next number" functionality to integer user fields to allow auto-indexing
35	35	Add min/max weight per piece attributes to notes and alerts

36	35	Add the alternate customer number (AltCustNum) of the bill-to customer to the Sales Order screen and allow finding orders using that field
37	34	Allow linked files to be organized into designated subfolders (add a new lookup table to assign+ link categories and folder locations)
38	33	Add a purchase order system for generating POs to outside processors [If possible, please include a summary of your ideas/needs with your ballot.]
39	33	Prevent manual un-checking of "Post" checkboxes on production screen with password override
40	33	Add a new EPICS module to assist with scrap remelt/casting facilities
41	33	Display total pieces and weight on Racks tab of the Sales Orders screen
42	29	When creating master work orders, allow separation by alloy type
43	29	Add a popup selection window at order entry to allow all or selected unposted sales orders to be quickly repriced with a single click
44	27	Add "Order Type" to the list of available note attributes for notes and alerts
45	26	Add a new Certifications module to generate custom certs for medical, automotive, and aerospace specs
46	25	Allow quote revisions to be saved (e.g. 10010 revision A, B, etc.)
47	24	Enhance user permission settings so that a customer service representative's access can be limited to data belonging to their customers only (e.g. sales orders, parts, pricing, etc.)
48	24	When changing part prices using Adjust Pricing Module Prices screen, automatically open the Adjust Sales Order prices screen for all open items that reference the updated parts
49	24	Add a threaded dialog feature for discussion of quotes (similar to customer activity log)
50	23	Allow a popup warning at time of scheduling if no base price is assigned to an item being scheduled
51	21	Display each item's requested date on the Pull Inventory Tickets screen
52	17	Allow "Next Dept 2" for any item to be changed on the Maintain Racks screen
53	17	Allow accessories to be sold by the roll, box, foot, meter, etc. in addition to per/piece
54	15	Add a supplier number to accessory parts and use it by default when creating stock replacement orders for those parts
55	10	Add a selection box/filter for office code on the Order Inquiry screen



EPICS 9.8 Major Update Available

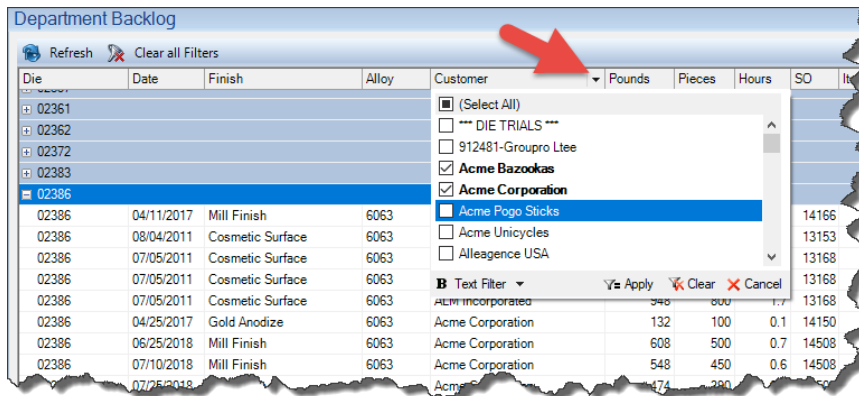
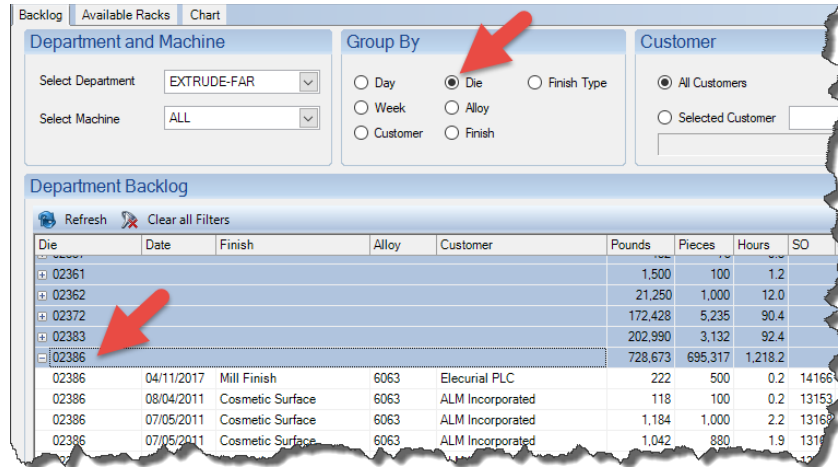
We are excited to release EPICS 9.8! The biggest news in this update is that we have a brand new, much requested, optional module finally available for purchase – the **Die Correction Module!** It is explained in detail in the next article, so be sure to read on after you review the update list below. The second biggest news in this update is that we have already included **5 wishlist items from this year's wishlist!** We also reached back into 2017 to add another 6 wishlist items, for a **total of 11 wishlist items** in this update. There are also many enhancements and important bug fixes. Don't miss this update! Remember to follow the Major Update instructions on the [download page](#).

- [2018 #2] When reallocating pieces from one item to another, add a line to the change log for both items.
- [2018 #3] Add a "Remaining Pieces" column to the department summary grid in bottom-left corner of production screen.

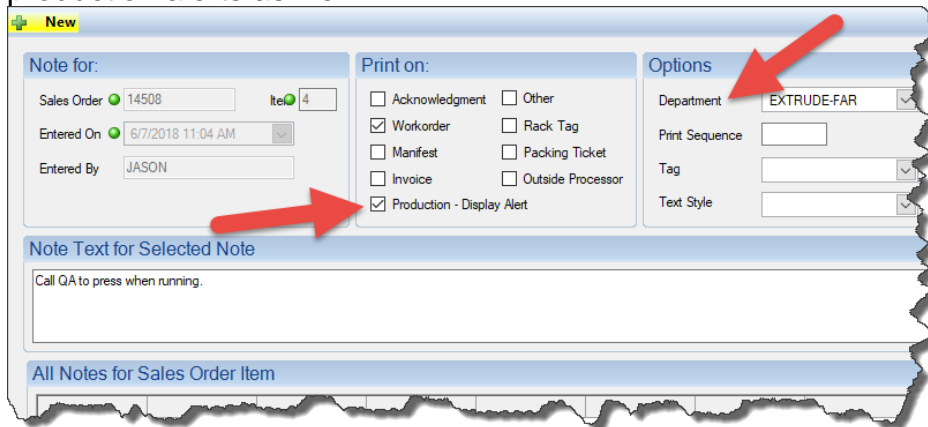
ing	Pieces	Pounds	Scrap Pc	Scrap Lb	Rem Pc	Rem Lb
ER	500	394	0	0	0	0
RUDE-FAR	0	0	0	0	500	394
-FAR	0	0	0	0	500	394
K-FAR	0	0	0	0	500	394
-FAR	0	0	0	0	500	394
NICE	0	0	0	0	500	394

- [2018 #5] Allow both Read and Write access to the press schedule and department schedule screens.
- [2018 #14] Enhance behavior of gOrderDataMustMatchPart to prevent order entry from changing any data values that came from the customer part (e.g. die, length, finish, pricing, etc.).
- [2018 #16] Add change log to EPICS Configuration screen.
- [2017 #4] Add Die Correction Module (See next article).

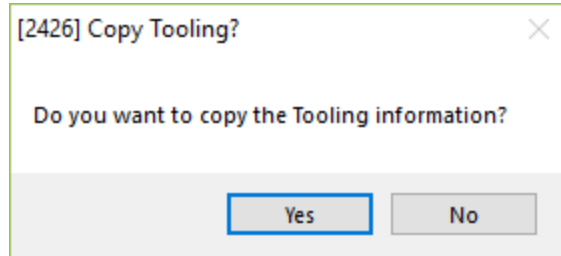
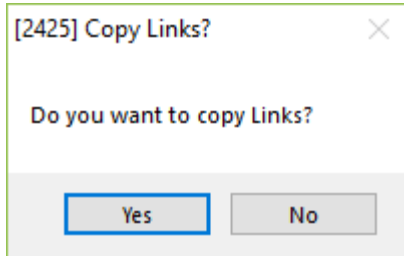
- [2017 #13] Add filtering and group-by options to the backlog screen.
 - The 'Group By' section is expanded to include options for Day, Week, Customer, Die, Alloy, Finish, and Finish Type
 - The column headers now have the filter option enabled in the Department backlog grid.



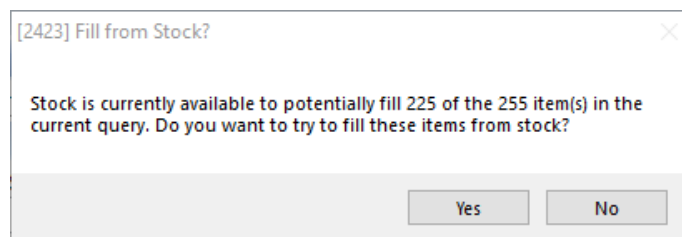
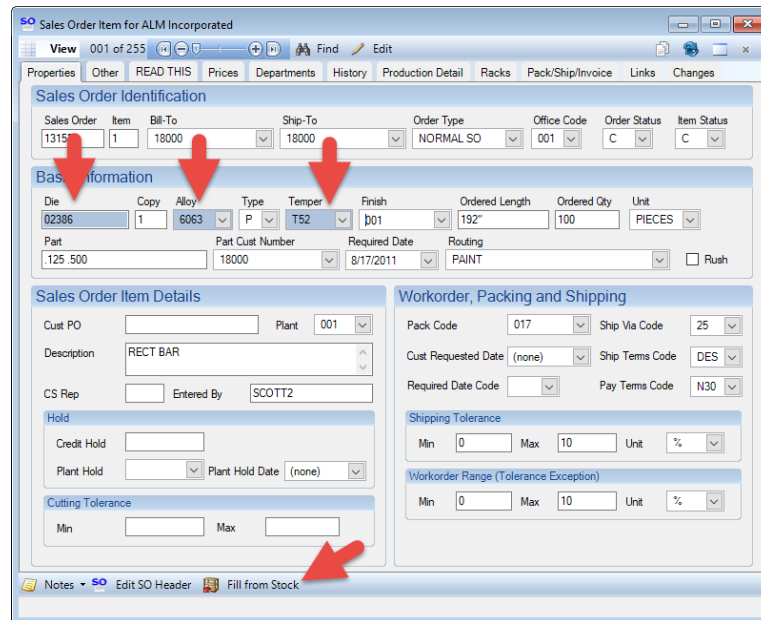
- [2017 #16] On item notes screen, allow input of department-specific production alerts as well.

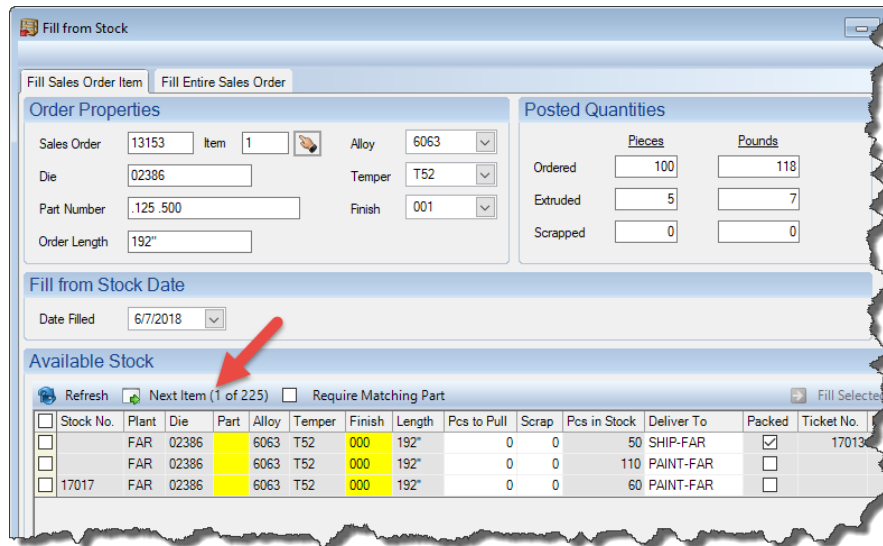


- [2017 #17] When creating a new die copy from an existing copy, do not carry over nitriding history or contents of "Purchase History" or "Die Oven Info" tabs. The option will be given to copy links and tooling.

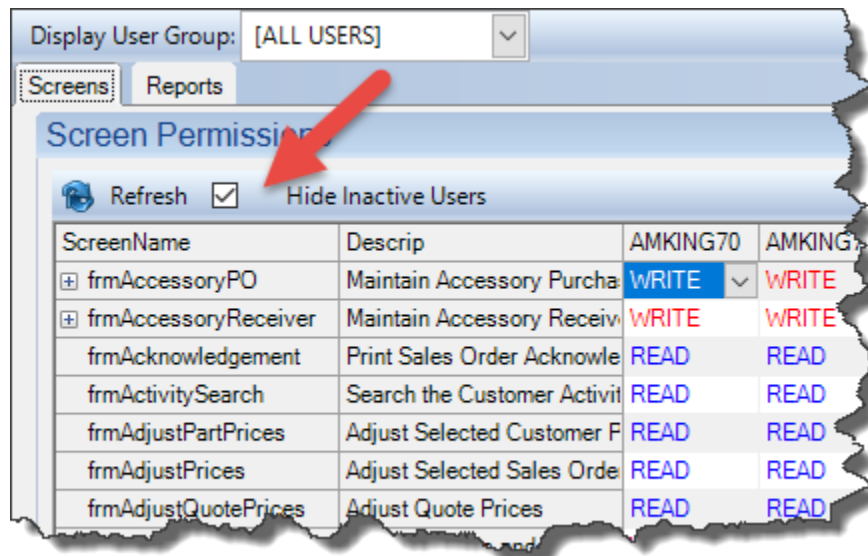


- [2017 #19] Set DtPack (Date Packed) of status R (received) tickets to the actual date/time the receipt was posted.
- [2017 #20] Add "Fill from Stock" button to frmSOItem to search stock for all items in current query.
 - In the example below, we have searched on Die, Alloy, and Temper, to retrieve 255 records. Clicking on the 'Fill from Stock' button will automatically scan all items for available stock.





- Item change log now includes automatic credit hold changes that result from changes to the item's quantity, length, or pricing.
- Item change log now includes line for racks cleared using the "Clear Rack" tab of the Maintain Production Racks screen.
- Add "Hide Inactive Users" checkbox to the permissions screen.



- Add a warning when scheduling an item for a date that the press, department, or plant is marked as 'closed' on the Calendar.
- Add SampleCount, SampleWt, SampleLen, and SampleLenUnit columns to ShiftProd table to store extrusion sample info entered by user.

- Check for stock and alert user if stock exists when user manually selects an item on the Calculate and Print Workorders screen or right-clicks on an item and selects "Calculate Workorders".
- Use gPriceDec to control number of decimals displayed for accessory PO pricing.
- Added a new configuration setting, gTestCertsWhenCertCodeSet, to generate a test cert for any item that has a CertCode assigned (should not be used with gTestCertsTensileRequired).
 - This allows for printing certs when no tensile is present but chemical composition is needed.
- Use current StdPcPerHr from customer part specs to calculate hours on backlog screen.
- Fix: When filling a packed bundle from stock with a different part number, do not select the shipping department as the next DeliverTo if other processing is required.
- Fix: Disable die drawing options on right-click menus of workstations where FastLook is not installed.
- Fix: Disable automatic search on "Close Old Cast Numbers" tab of Chemical Composition screen (must click "Refresh" button to search).
- Fix: [Oracle only] – eliminate error when adding items to schedule.
- Fix: [Oracle only] – eliminate error when copying permissions from one user to another.
- Fix: Prevent unhandled exception error when attempting to schedule items without specifying a date.
- Fix: Use gInvoiceWtDecimals to allow decimal weights for manually created invoices.
- Fix: Prevent display of kit/assembly component sales orders (900000xxx) on sales order screen.
- Fix: Store weight and length of received accessories in their stock ticket.
- Fix: When copying permissions from one user to another, allow a blank (empty) cell to overwrite a non-empty cell (READ, WRITE, NONE).

- Fix: Update item packing history correctly when moving a packed ticket to stock.
- Fix: Enhanced Shipping - Always erase Ticket.TruckID when removing unscanned tickets from a picklist.
- Fix: Correct copy/paste for user fields. New user list feature was causing pasted value to be retained after typing new value.
- Fix: Eliminate error opening schedule screens when field chooser has been used to add SOItemDept.MachineNum to column list.
- Fix: Clear default value for gDepotRPTFile.
- Fix: Improve accuracy of color-coding on Die Oven Contents displays.
- Fix: message 1291 (use copy now on screen as basis for new copy) - was not recognizing "No" response from user.
- Fix: Improve enforcement of gRequirePartNum and tell user which item has an invalid part.
- Fix: gProdCheckCastNumbers was not always stopping invalid cast numbers.
- Fix: Print New Tickets screen: Allow right-click on scrap code to edit the lookup table.

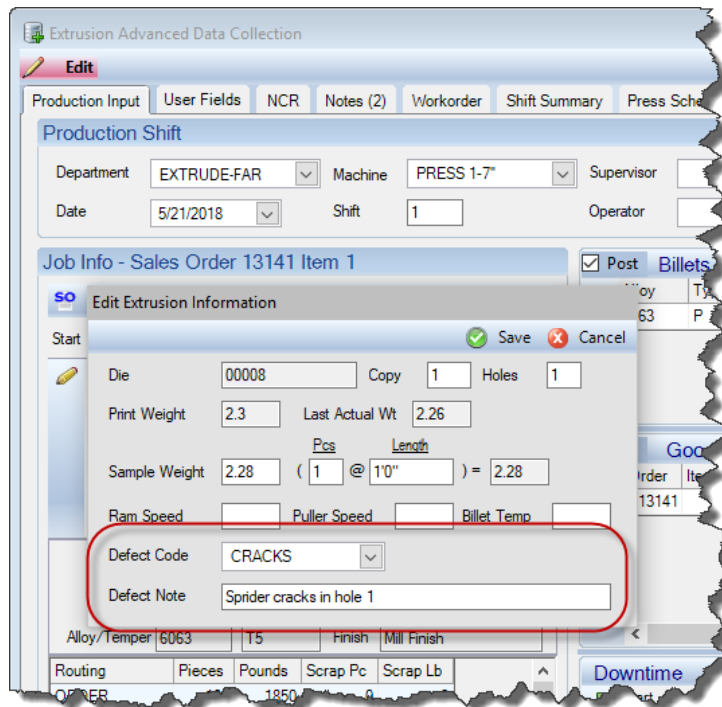


New Die Correction Module

We are excited to finally offer the Die Correction Module for purchase! The team at Foy Inc is very grateful for the many customers who offered thoughts and feedback regarding the functionality of this new module. Your feedback has been instrumental in creating a new tool that is both standard to the industry and customizable to your specific needs. Priced the same as the Corrective Action, Quote, Enhanced Shipping, and Enhanced Finishing modules, we know you'll find the Die Correction Module a real bargain at \$3,575. The Die Correction Module allows you to do the following:

- Create Die Corrections as needed with 'Defect Codes' and 'Next Tasks' for follow-up.
- Post completed correction task history, visible in the Die Correction Module and on the Die Copy screen.
- Make detailed notations if needed regarding holes affected and corrective actions needed and taken.
- Schedule in-house corrections for specific tasks and assign those tasks to employees for follow-up.
- Schedule and ship die copy corrections to outside suppliers for correction and receive them back again.
- Automatically update the status of the Die Copy based on the progress of the Die Correction.
- Customize your own die locations, correction tasks, defect codes, outside die correctors, corrector employees, and more!

It all starts with creating the initial Die Correction for the die copy in question. You can see below that this can easily be done right from the production screen:



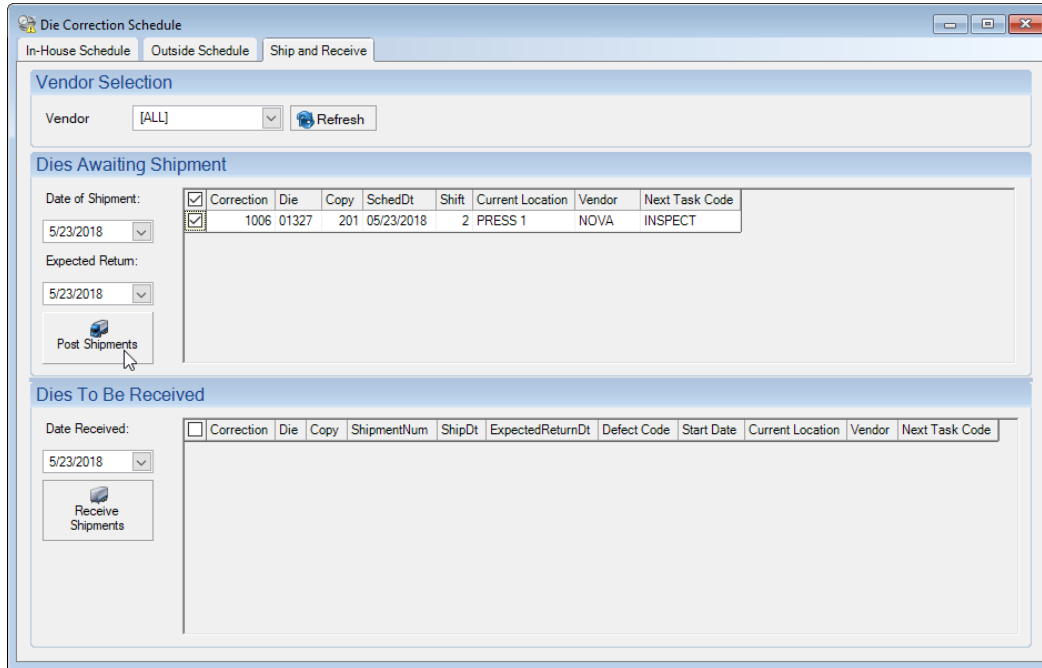
Once a correction has been created, you'll be able to view the correction along with the task history at any time using the new Maintain Die Corrections screen, as seen below:

Easily schedule in-house corrections and assign them to correction employees for completion using the Die Correction Schedule screen:

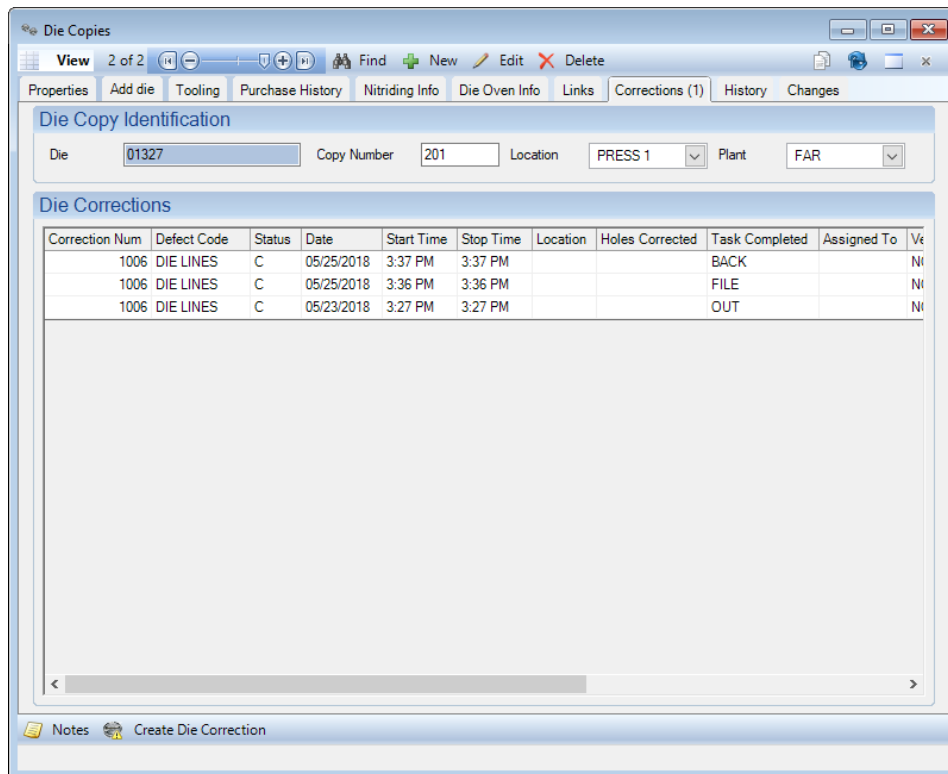
Use the Die Correction Schedule screen to post completed tasks, recording critical detail concerning the completed task, along with defining the die copy's location, and the next task needed, and who needs to complete it:

If a correction needs to go outside for repair, use the Die Correction Schedule to schedule it to go to a vendor:

Keep track of what is at the outside vendor for correction and when it has been received back using the 'Ship and Receive' tab of the Die Correction Schedule screen.



Easily see all correction task history for any die copy on the 'Corrections' tab of the Die Copies screen:



The EPICS Help documents have step-by-step instructions for the simple setup involved to get the module up and running. There are also specific instructions on how to manage a correction to completion.

For such an excellent new feature, the price is a steal at \$3,575! We are also happy to offer a 30-Day Trial for those who would like to run the Die Correction Module through the paces on your test database prior to purchasing.

If you are interested in purchasing the module, requesting a trial key, or just have questions, please send an email to info@foyinc.com.



Get yours now while supplies last!

EUC 2019

Come discover the beauty of the desert and learn all things EPICS! If you've never been to **Scottsdale, Arizona**, you don't want to miss discovering the beauty and charm of the southwestern desert and mountains. If you have already, it's time to go back!



EUC 2019 April 7th – 10th will be held at the beautiful [Scottsdale Plaza Resort](#), self-described as a **desert oasis**.

Rooms are already available, at a great rate of \$189.00 per night. If you want to upgrade, you have options of

Villa and Patio Suites upon request at very reasonable rates.

We received many comments from this year's conference in Vegas that the Monday night dinner was missed. In response, we have planned a very special treat for you in 2019:

We plan to dine at [La Puesta Del Sol](#) in Fort McDowell. This will include a scenic transport through the beautiful desert with a mountainous backdrop. We will arrive for a Native American reservation experience like no other! La Puesta Del Sol is Spanish for 'the setting sun', and this is one sunset you won't forget! We will enjoy a great cowboy barbecue, entertainment, and views that will leave a lifetime impression.



Make your hotel reservations now by calling 1-800-832-2025 and use the group code: FOYEP0419

Or just click [HERE](#)

Conference registration will be open by late summer to give everyone an earlier start in making your plans for EUC 2019.

You'll fly into Phoenix and have just a short ride to the Scottsdale Plaza Resort. Just a few miles away, you will be able to enjoy the rustic

Oldtown Scottsdale, full of character, food, and shopping fun.



We will, of course, have plenty of exciting EPICS developments to share with you.

As we enter into our 21st Annual User Conference. Let's start the next 20 years off with a bang!

Come join us in the desert for dessert!



New Customers



As mentioned, it has been a busy year at Foy Inc! In addition to all that has been happening here, including celebrating our 40th Anniversary, we have been very privileged to welcome two new customers so far this year. We want to extend a very warm welcome to **Extrum**, from Choloma, Honduras, as well as **Jordan Aluminum Company** from Memphis, Tennessee. Both companies make fine additions to the Foy Inc family

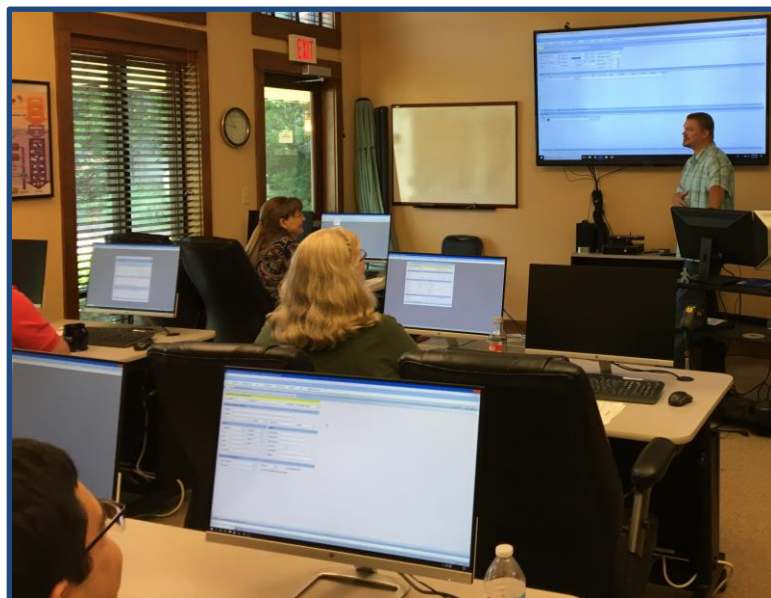
and we look forward to years of working successfully together!

EPICS Training Opportunities

Be sure to have your EPICS Administrator and key users trained thoroughly on EPICS V9.

EPICS classroom training sessions are held at the Foy Inc offices in Farmersville, Texas. The next available V9 classes are scheduled for **June 18-21**, **Aug 13-16**, and **Sept 17-20**. You can always view training class availability and cost information on our [Training Classes](#) webpage.

If you are interested in a two-day Reports training class working with the EPICS database, please let us know by calling 972-782-7282 or emailing us at info@foyinc.com. We schedule the Reports classes on demand.



EPICS Customer List

*On any given day
EPICS is helping over 15,000 people
at over 100 extrusion plants around the world.*

Aacoa Extrusions – Niles, Michigan
 Aerolite Extrusion – Youngstown, Ohio
 Almag Aluminum Inc. – Brampton, Ontario
 Almax Aluminium – Brisbane, Australia
 Altec – Jeffersonville, Indiana
 Aluminio de Baja California (ABC) – Tijuana, Mexico
 Aluminio de Centro América – San Salvador, El Salvador
 Aluminum Extrusions Inc – Senatobia, Miss.
 American Aluminum Extrusions – Canton, Ohio
 American Aluminum Extrusions – Beloit, WI
 American Aluminum Extrusions – Roscoe, Illinois
 Anaheim Extrusions (UMEX) – Anaheim, California
 APEL Extrusions Ltd. – Calgary, Alberta
 APEL Extrusions Ltd. – Coburg, Oregon
 Apex Aluminum Extrusions – Langley, BC, Canada
 Arch Aluminum – Miami, Florida
 Architectural & Metal Systems – Cork, Ireland
 Ascend Custom Extrusions – Wylie, Texas
 Astrex Inc – Lake Shore, Ontario
 Benada Aluminum – Sanford, Florida
 Bristol Aluminum – Levittown, Pennsylvania
 Briteline Extrusions – Summerville, S. Carolina
 BRT Extrusions – Niles, Ohio
 CanArt – Brampton, Ontario
 CanArt – Windsor, Ontario
 Capral Extrusions – Angaston, Australia
 Capral Extrusions – Penrith, Australia
 Central Aluminum – Columbus, Ohio
 Claridge Products – Harrison, Arkansas
 Crown Extrusions - Chaska, Minnesota
 Gateway Extrusions, Ltd – Union, Missouri
 DeeZee, Inc – Des Moines, Iowa
 Extruders - a division of Tower – Wylie, Texas
 Extrudex – Weston, Ontario
 Extrudex – Bernières, Quebec
 Extrudex – North Jackson, Ohio
 Extrum – Chaloma, Honduras
 FISA – Guayaquil, Ecuador
 Frontier Aluminum – Corona, California
 G. James – Brisbane, Australia
 G. James – Sydney, Australia
 Hulamin – Pietermaritzburg, South Africa
 Hulamin – Capetown, South Africa
 Hulamin – Olifantsfontein, South Africa
 Independent Extrusions (INEX) – Hamilton, New Zealand
 Independent Extrusions (INEX) – Brisbane, Australia
 Independent Extrusions (INEX) – Melbourne, Australia
 International Extrusions – Garden City, Michigan
 International Extrusions (UMEX) – Waxahachie, Texas
 Jalex – Kingston, Jamaica
 Jordan Aluminum Company – Memphis, Tennessee
 Keymark Corporation – Fonda, New York
 Keymark Corporation – Lakeland, Florida
 Keymark Corporation – Orlando, Florida
 MI Metals, Inc - Smyrna, Tennessee
 MI Metals, Inc – Millersburg, Pennsylvania
 MI Metals, Inc – Oldsmar, Florida
 MI Metals, Inc – Prescott Valley, Arizona
 MI Windows and Doors – Carrollton, Texas
 Michigan Extruded Aluminum – Jackson, Michigan
 Midwest Aluminum – Withee, Wisconsin
 Nanshan America – Lafayette, Indiana
 Nigalex – Lagos, Nigeria
 Non-Ferrous Extrusion – Houston, Texas
 Oldcastle Building Envelope – Midway, Tennessee
 Oldcastle Building Envelope – Terrell, Texas
 Orrvilon (Holtec) – Orrville, Ohio
 Patrick Metals (UMEX) – Mishawaka, Indiana
 Pennex – Leetonia, Ohio
 Pennex – Wellsville, Pennsylvania
 Perfiles de Aluminio.– San Juan, Puerto Rico
 Ply Gem Extrusion– Bryan, Texas
 Postle Aluminum – Cassopolis, Michigan
 Press Metals – Cumming, Georgia
 Pries Enterprises – Independence, Iowa
 PT Alumindo Perkasa – Jakarta, Indonesia
 PT Indal – Surabaya, Indonesia
 Profile Extrusions – Rome, Georgia
 Profile (RJS Precision Ext.) – Phoenix, Arizona
 Schimmer Metal – Bangkok, Thailand
 Selaco Aluminium – Johar, Malaysia
 Service Center Metals – Prince George, Virginia
 Shoals Extrusion – Florence, Alabama
 Sierra Aluminum – Fontana, California
 Sierra Aluminum – Riverside, California
 Silver City Aluminum -- Taunton, Mass
 Spectra Aluminum – Bradford, Ontario
 Star Extruded Shapes - Canfield, Ohio
 Sun Valley - Los Angeles, California
 Superior Extrusion – Gwinn, Michigan
 Superior Metal Shapes – Chino, California
 Taber Extrusions – Gulfport, Mississippi
 Taber Extrusions – Russellville, Arkansas
 Tecnoglass – Barranquilla, Columbia
 Tifton Aluminum Extrusions – Tifton, Georgia
 Tri–City Extrusion – Bristol, Tennessee
 Tubelite – Reed City, Michigan
 Universal Molding (UMEX) – Downey, California
 Vitex – Franklin, New Hampshire
 Wakefield-Vette – Pelham, New Hampshire
 Wakefield-Vette – Withee, Wisconsin
 Western Extrusion – Carrollton, Texas
 Wolverine Tube Inc – Decatur, Alabama
 Zarbana Industries – Columbiana, Ohio

Foy Inc

111 Farmersville Pkwy, Suite 100

Farmersville, TX 75442

Phone: 972-782-7282

Fax: 972-782-7130

Web: www.foyinc.com

General Information: info@foyinc.com

Help: help@foyinc.com

Jim Foy:

jim@foyinc.com

John Stenger:

john@foyinc.com

Scott Wilson:

scott@foyinc.com

Jason Naff:

jason@foyinc.com

Stacy Foley:

stacy@foyinc.com

Mariah Zagorsky:

mariah@foyinc.com

Stephan Stenger:

stephan@foyinc.com