



FOY'S EPICS EVENTS

In this issue:

9.7.1 MINOR UPDATE RELEASED.....	2
2018 EPICS USER CONFERENCE	7
FOY INC HOLIDAY SCHEDULE	7
EPICS TRAINING OPPORTUNITIES.....	8
EPICS CUSTOMER LIST.....	9

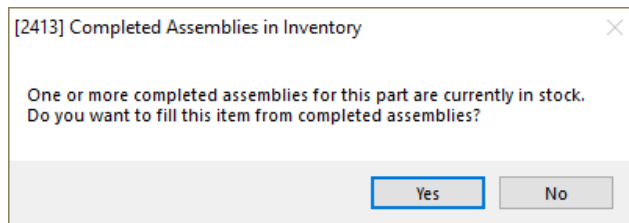


9.7.1 Minor Update Released

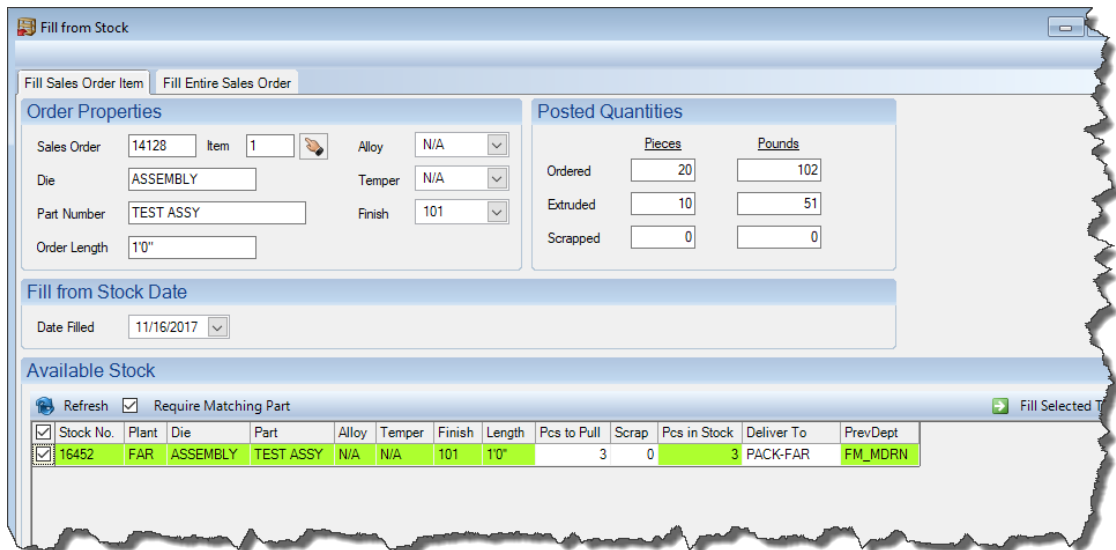
While this is technically a minor update (meaning no database change was required), we managed to include a large number of wishlist items this time around. Eight, to be exact. Fun fact, this comes in second for the most wishlist items ever included in an EPICS minor update. EPICS 9.2.2, released back in December of 2015, had nine wishlist items.

There are a number of important fixes also included in this update. Please see the full update description below – wishlist items are indicated with an *.

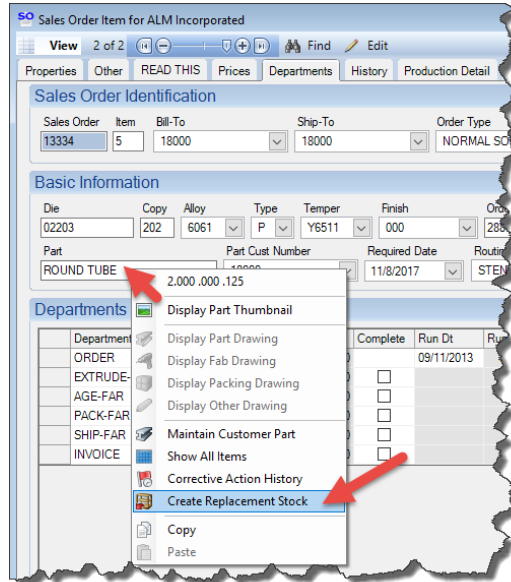
- *[2014 WL #16] Allow completed kits and assemblies to be added to stock, filled from stock, and reallocated.
 - When you key in a Sales Order number on the Fill from Stock screen that calls for a Kit or Assembly, AND you have completed assemblies in stock, you will see the following question:



- Answering 'YES' will prompt EPICS to look for completed Kits/Assemblies instead of the individual components (seen below). Answering 'NO' will cause EPICS to expect to fill the individual components.



- *[WL #24] Add right-click context menu option to the customer part number to open the stock replacement screen for that part.

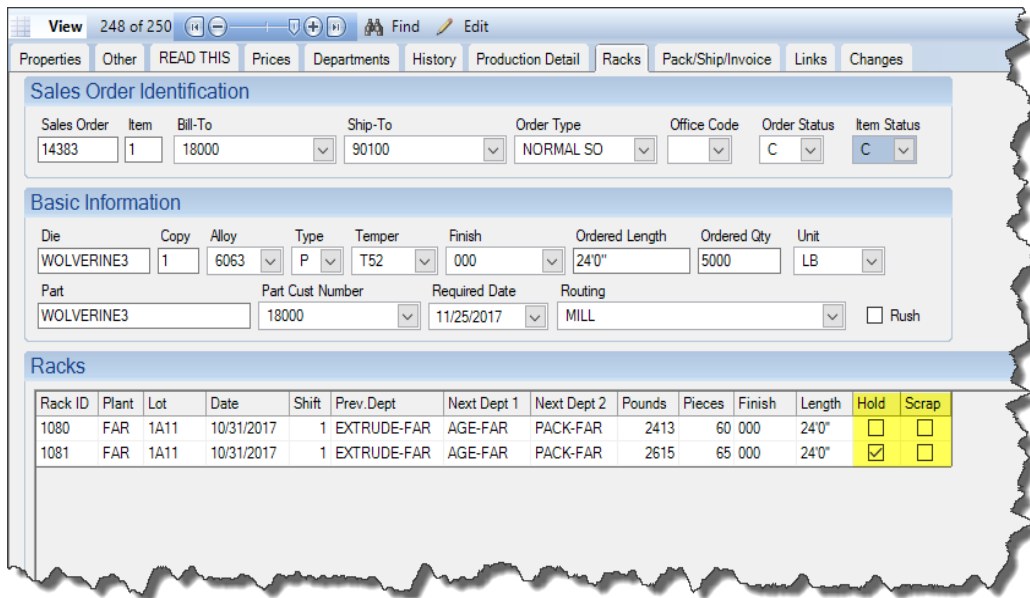


- *[WL #25] When selecting a press in the "Standard Data" section of the die screen, choose the default container size using the press's machine record.
- *[WL #26] Add separate, per user Production screen permission to enable/disable the "Post" checkboxes.

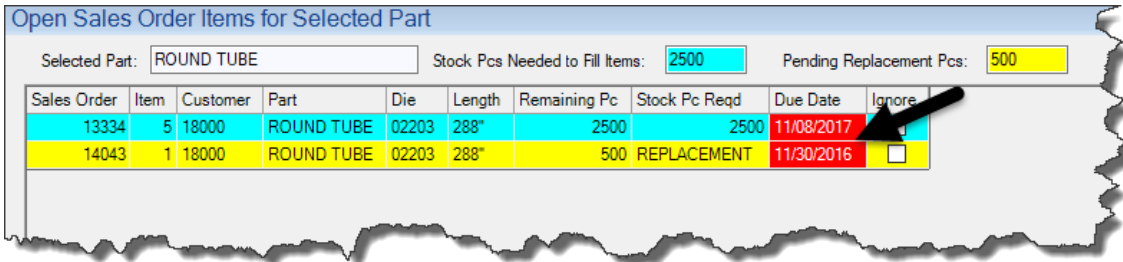
Screen Permissions

ScreenName	Descrip	AMKING70	AMKING71	CHARLIE_M	DI...
frmQCust	Maintain Quote Customers	WRITE	WRITE	NONE	NO
frmQDie	Maintain Quote Dies	WRITE	WRITE	NONE	NO
frmQuote	Maintain Quotes	WRITE	WRITE	NONE	NO
frmQuotePrint	Print Quotes	READ	READ	NONE	NO
frmQuoteType	Maintain Quote Types	WRITE	WRITE	NONE	NO
frmRack	Maintain Production Racks	WRITE	READ	NONE	NO
frmReceive	Receive from Outside Proc	READ	READ	NONE	NO
frmReference	Lookup Table Maintenance	WRITE	WRITE	NONE	NO
frmReplaceStock	Create Orders for Stock Re	READ	READ	NONE	NO
frmReports	Select Crystal Reports	READ	READ	NONE	NO
frmReportsMn	Maintain List of Crystal Re	WRITE	WRITE	NONE	NO
frmRequiredFields	Edit Required Fields				
frmReserve	Maintain Reserves	READ	READ	READ	NO
frmRouting	Maintain Sales Order Routi	WRITE	WRITE	NONE	NO
frmSales	Maintain Salesman Informa	WRITE	WRITE	NONE	NO
frmScreenLayout	Screen Layout Designer	READ	READ	NONE	NO
frmShiftProd	Advanced Production Data	WRITE	WRITE	WRITE	NO
frmShiftProd	Allow 'Add New'				
frmShiftProd	Allow 'Edit'				
frmShiftProd	Allow 'Delete'				
frmShiftProd	Change Post				NO
frmShiftProd	'Production Input' Tab	NO			
frmShiftProd	'Paint Consumables' Tab	YES			
frmShiftProd	'User Fields' Tab				
frmShiftProd	'Notes' Tab				
frmShiftProd	'Workorder' Tab				

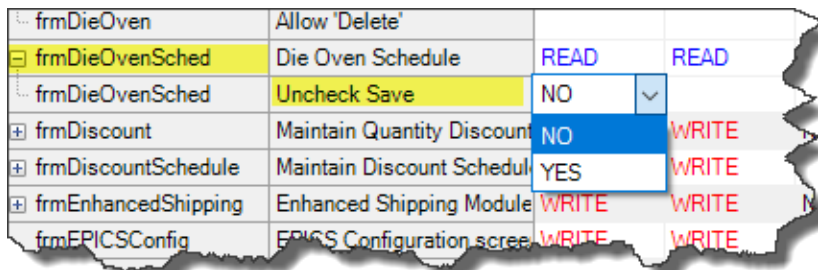
- *[WL #27] Display rack status flags (hold/scrap) on "Racks" tab of sales order screen



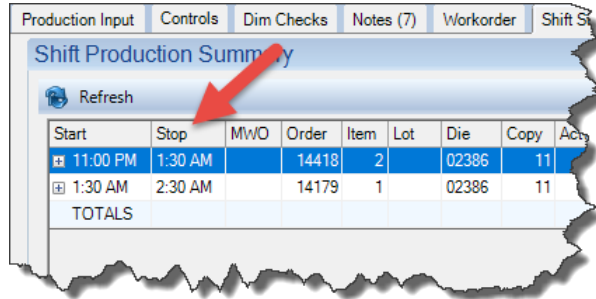
- *[WL #28] On "Stock Replacement" screen, highlight replacement items that are running late.



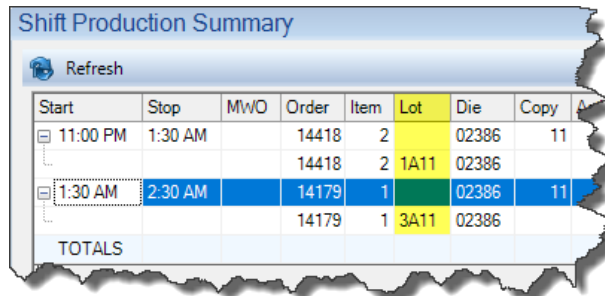
- *[WL #31] Add new permission to prevent users from un-checking the "Save to Die Oven History" checkbox on the "Unload Oven" screen if they are not cleared to do so.



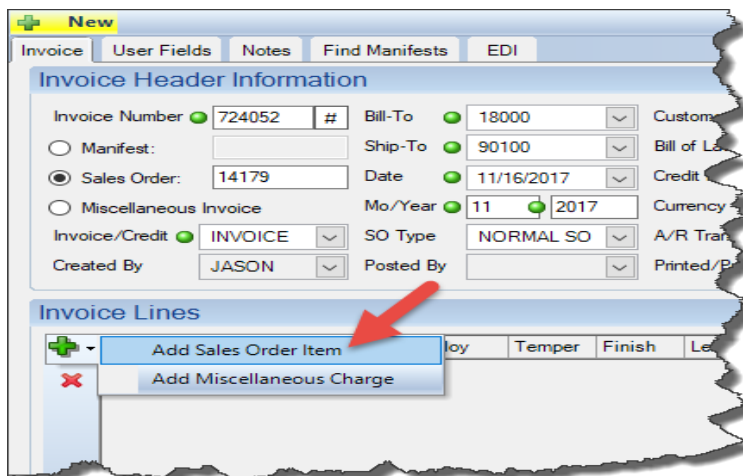
- *[WL #32] Add a column to the "Shift Summary" tab of the production screen to display the stop time of each job.

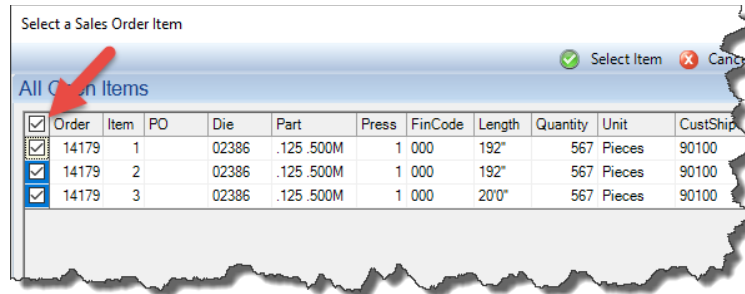


- Add "Lot" column to the "Shift Summary" tab of the production screen.



- Allow addition of reserve dates up to 52 weeks in the future without displaying a warning.
- Set "Manifest" radio button by default when creating a new invoice.
- When creating a manual Invoice by Sales Order, allow multiple items from the SO to be easily added to the invoice.





- Fix: Assign Ticket.PartCustNum correctly on tickets created when receiving from outside processor.
- Fix: Allow "Cust Requested Date" (CustReqDt) to be cleared using Edit mode on Sales Order screen.
- Fix: Always assign a default "Deliver To" department when filling items from stock.
- Fix: Force required user list fields to be entered when printing packing tickets.
- Fix: Allow added length on part to be in different units than part length as long as both are imperial or metric.
- Fix: When editing extrusion postings, ignore scrap when calculating whether item and lot is complete.
- Fix: (Oracle only) Eliminate unhandled exception when expanding forms on permissions screen.
- Fix: (Oracle only) Eliminate error when filling packed bundles from stock.
- Fix: (Oracle only) Eliminate error ORA-01843 when adding items to press schedule.
- Fix: Stock Replacement screen: Improve replacement quantity calculations for component parts.
- Fix: For production postings, set RackDetail.Dt to the same value as ShiftProd.StartTime (as it was before V9.6.0).
- Fix: ProductionDetail rows for good production (PRD) and downtime (DT) should have a blank ChargeTo column.

2018 EPICS User Conference



The 2018 EPICS User Conference is taking shape! We enjoyed the **New York New York** hotel so much in 2012 that we are heading back for more! If you haven't already, be sure to mark **April 15-18** on your calendar. The registration page will be available on our website by the first of the year.

Rooms are **very affordable**.
Saturday at \$175 and then Sunday –
Wednesday at \$75.

You can already book your rooms by clicking [this link](#) and choosing "Attendee" from the drop-down list OR you can call Central Reservations at **1-800-693-6763** and refer to the group's name, "Foy, Inc. EPICS User Conference 2018" or group block code **SFOY0418NY**.

Since there are so many options to entertain yourselves in Vegas, we are going to leave Monday night open for your exploration! We will have more conference details soon on our website.

Foy Inc Holiday Schedule

Everyone here at Foy Inc would like to wish you all a Happy Thanksgiving, Merry Christmas, and Happy New Year!



Please take note of our holiday closings:

CLOSED: November 23-24

CLOSED: December 25 – January 1

(Normal office hours return Tuesday, January 2nd)

We will be keeping an eye on the Help Desk (help@foyinc.com) during our holiday closings. If there is an **urgent** issue, we will do our best to respond in a timely manner.

EPICS Training Opportunities

Be sure to have your EPICS Administrator and key users trained thoroughly on EPICS V9.

EPICS classroom training sessions are held at the Foy Inc offices in Farmersville, Texas. The next available V9 classes are scheduled for **Jan 15-18**, **Feb 12-15**, and **May 7-10**. You can always view training class availability and cost information on our [Training Classes](#) webpage.

We do have a two-day **Report Writing Class** scheduled for **Jan 25-26** with room for additional attendance. Send an email to info@foyinc.com if you are interested in registering.



If you are interested in a two-day Reports training class working with the EPICS database, please let us know by calling 972-782-7282 or emailing us at info@foyinc.com. We schedule the Reports classes on demand.



EPICS Customer List

*On any given day
EPICS is helping over 15,000 people
at 100 extrusion plants around the world.*

Aacoa Extrusions – Niles, Michigan
Aerolite Extrusion – Youngstown, Ohio
Almag Aluminum Inc. – Brampton, Ontario
Almax Aluminum – Brisbane, Australia
Altec – Jeffersonville, Indiana
Aluminio de Baja California (ABC) – Tijuana, Mexico
Aluminio de Centro América – San Salvador, El Salvador
Aluminum Extrusions Inc – Senatobia, Miss.
American Aluminum Extrusions – Canton, Ohio
American Aluminum Extrusions – Beloit, WI
American Aluminum Extrusions – Roscoe, Illinois
Anaheim Extrusions (UMEX) – Anaheim, California
APEL Extrusions Ltd. – Calgary, Alberta
APEL Extrusions Ltd. – Coburg, Oregon
Apex Aluminum Extrusions – Langley, BC, Canada
Arch Aluminum – Miami, Florida
Architectural & Metal Systems – Cork, Ireland
Ascend Custom Extrusions – Wylie, Texas
Astrex Inc – Lake Shore, Ontario
Benada Aluminum – Sanford, Florida
Bristol Aluminum – Levittown, Pennsylvania
Briteline Extrusions – Summerville, S. Carolina
BRT Extrusions – Niles, Ohio
CanArt – Brampton, Ontario
CanArt – Windsor, Ontario
Capral Extrusions – Angaston, Australia
Capral Extrusions – Penrith, Australia
Central Aluminum – Columbus, Ohio
Claridge Products – Harrison, Arkansas
Crown Extrusions - Chaska, Minnesota
Gateway Extrusions, Ltd – Union, Missouri
DeeZee, Inc – Des Moines, Iowa
Extruders - a division of Tower – Wylie, Texas
Extrudex – Weston, Ontario
Extrudex – Bernières, Quebec
Extrudex – North Jackson, Ohio
FISA – Guayaquil, Ecuador
Frontier Aluminum – Corona, California
G. James – Brisbane, Australia
G. James – Sydney, Australia
Hulamin – Pietermaritzburg, South Africa
Hulamin – Capetown, South Africa
Hulamin – Olifantsfontein, South Africa
Independent Extrusions (INEX) – Hamilton, New Zealand
Independent Extrusions (INEX) – Brisbane, Australia
Independent Extrusions (INEX) – Melbourne, Australia
International Extrusions – Garden City, Michigan
International Extrusions (UMEX) – Waxahachie, Texas
Jalex – Kingston, Jamaica
Keymark Corporation – Fonda, New York
Keymark Corporation – Lakeland, Florida
Keymark Corporation – Orlando, Florida
MI Metals, Inc - Smyrna, Tennessee
MI Metals, Inc – Millersburg, Pennsylvania
MI Metals, Inc – Oldsmar, Florida
MI Metals, Inc – Prescott Valley, Arizona
MI Windows and Doors – Carrollton, Texas
Michigan Extruded Aluminum – Jackson, Michigan
Midwest Aluminum – Withee, Wisconsin
Nanshan America – Lafayette, Indiana
Nigalex – Lagos, Nigeria
Non-Ferrous Extrusion – Houston, Texas
Oldcastle Building Envelope – Midway, Tennessee
Oldcastle Building Envelope – Terrell, Texas
Orrvilon (Holtec) – Orrville, Ohio
Patrick Metals (UMEX) – Mishawaka, Indiana
Pennex – Leetonia, Ohio
Pennex – Wellsville, Pennsylvania
Perfiles de Aluminio.– San Juan, Puerto Rico
Ply Gem Extrusion– Bryan, Texas
Postle Aluminum – Cassopolis, Michigan
Press Metals – Cumming, Georgia
Pries Enterprises – Independence, Iowa
PT Alumindo Perkasa – Jakarta, Indonesia
PT Indal – Surabaya, Indonesia
Profile Extrusions – Rome, Georgia
Profile (RJS Precision Ext.) – Phoenix, Arizona
Schimmer Metal – Bangkok, Thailand
Selaco Aluminium – Johar, Malaysia
Service Center Metals – Prince George, Virginia
Shoals Extrusion – Florence, Alabama
Sierra Aluminum – Fontana, California
Sierra Aluminum – Riverside, California
Silver City Aluminum -- Taunton, Mass
Spectra Aluminum – Bradford, Ontario
Star Extruded Shapes - Canfield, Ohio
Sun Valley - Los Angeles, California
Superior Extrusion – Gwinn, Michigan
Superior Metal Shapes – Chino, California
Tecnoglass – Barranquilla, Columbia
Taber Extrusions – Gulfport, Mississippi
Taber Extrusions – Russellville, Arkansas
Tifton Aluminum Extrusions – Tifton, Georgia
Tri–City Extrusion – Bristol, Tennessee
Tubelite – Reed City, Michigan
Universal Molding (UMEX) – Downey, California
Vitex – Franklin, New Hampshire
Wakefield-Vette – Pelham, New Hampshire
Wakefield-Vette – Withee, Wisconsin
Western Extrusion – Carrollton, Texas
Wolverine Tube Inc – Decatur, Alabama
Zarbana Industries – Columbiana, Ohio

Foy Inc
111 Farmersville Pkwy, Suite 100
Farmersville, TX 75442
Phone: 972-782-7282
Fax: 972-782-7130

Web: www.foyinc.com
General Information: info@foyinc.com
Help: help@foyinc.com

Jim Foy: jim@foyinc.com
John Stenger: john@foyinc.com
Scott Wilson: scott@foyinc.com
Jason Naff: jason@foyinc.com
Stacy Foley: stacy@foyinc.com
Mariah Zagorsky: mariah@foyinc.com
Stephan Stenger: stephan@foyinc.com