



FOY'S EPICS EVENTS

In this issue:

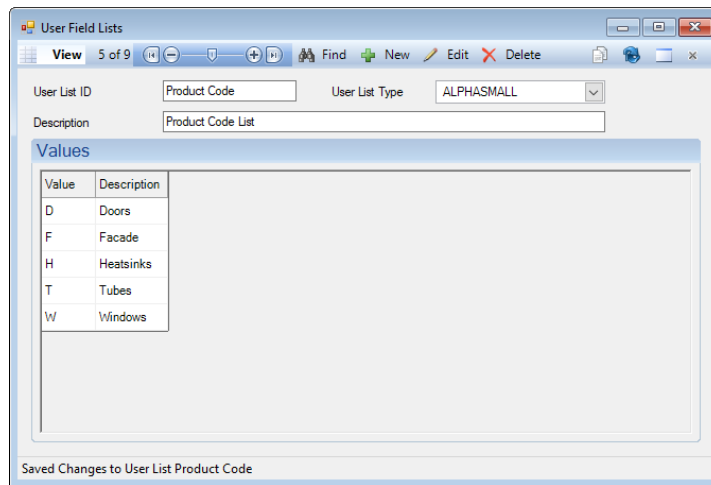
9.7 MAJOR UPDATE RELEASED.....	2
AEC HAPPENINGS.....	12
EPICS TRAINING OPPORTUNITIES.....	14
EPICS CUSTOMER LIST.....	15



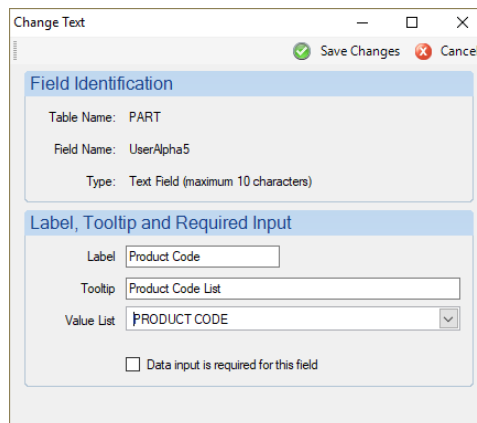
9.7 Major Update Released

We are pleased to release an exciting major update that contains 10 Wishlist items from this year's Epics User Conference. 6 of the 10 items are from the items voted in the Top 10. Below is a list of all of the new features in this great update, including many improvements and critical bug fixes.

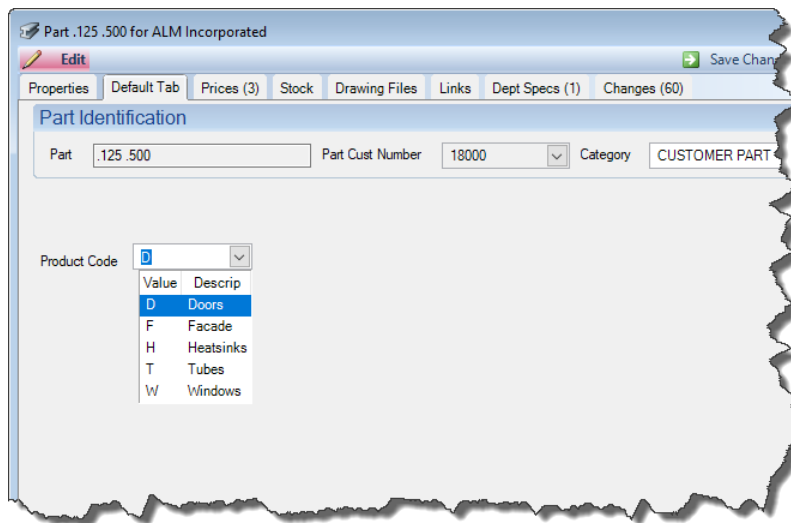
- ***[WL #1] Validated user fields: Allow creation of user-defined lists of allowable data values to be linked to any user field.**
 - This feature allows you to create a list of values with either text or numeric data types and then assign those values to a user field with a matching data type. A new button has been added within the Screen Layout Designer screen called 'Edit User Lists'. Clicking on this button will open the User Field Lists screen and allow you to create and edit custom lists.
 - Your created list will look something like below:



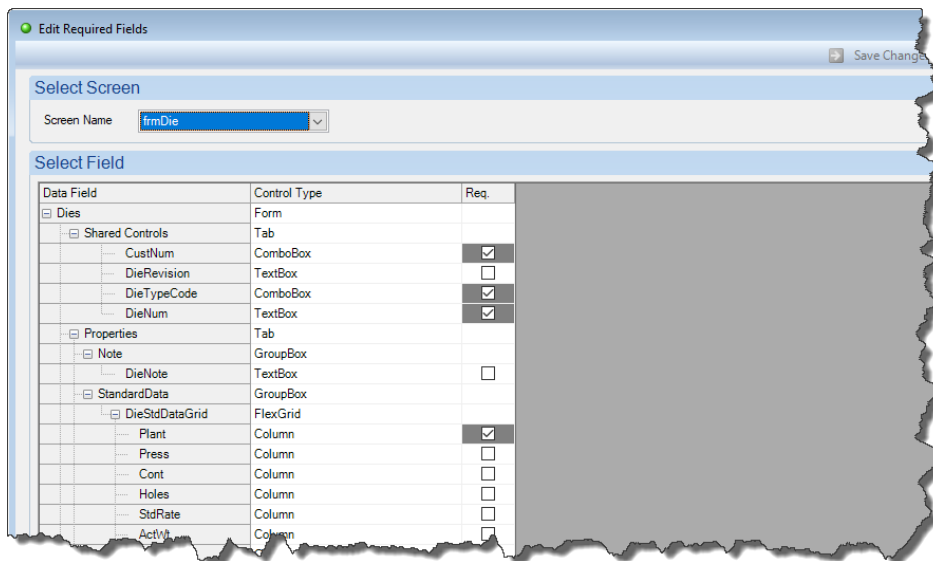
- You will then need to assign that list to a user field with a matching data type, like below:



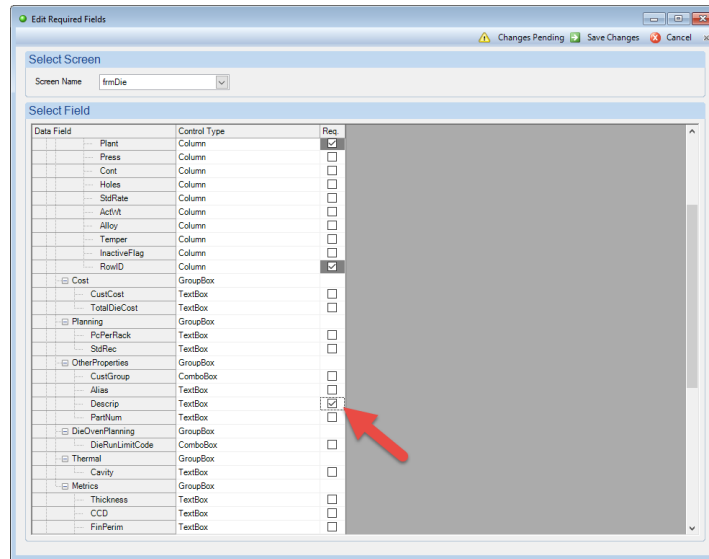
- Once you have completed these steps, and you have placed your custom user field containing the list onto a custom user field tab, you will be able to make use of your new list, as depicted:



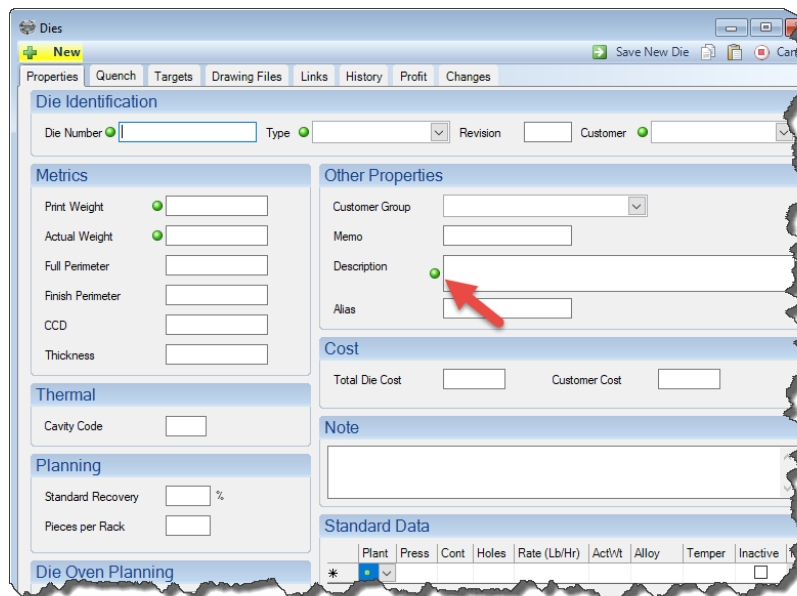
- ***[WL #2] Allow selection of any field as a required field**
 - This screen allows a user with write permission to the new screen 'Edit Required Fields' (frmRequireFields) to define standard EPICS data fields as 'Required' input fields.
 - Upon opening the new screen and selecting the EPICS screen you wish to work with, you will immediately see the existing data fields on that screen and a Req. (required) column. Boxes that are already checked and shaded in gray indicate default required fields in EPICS. These cannot be changed.



- To require a field, simply check the Req. box by that row, like below:

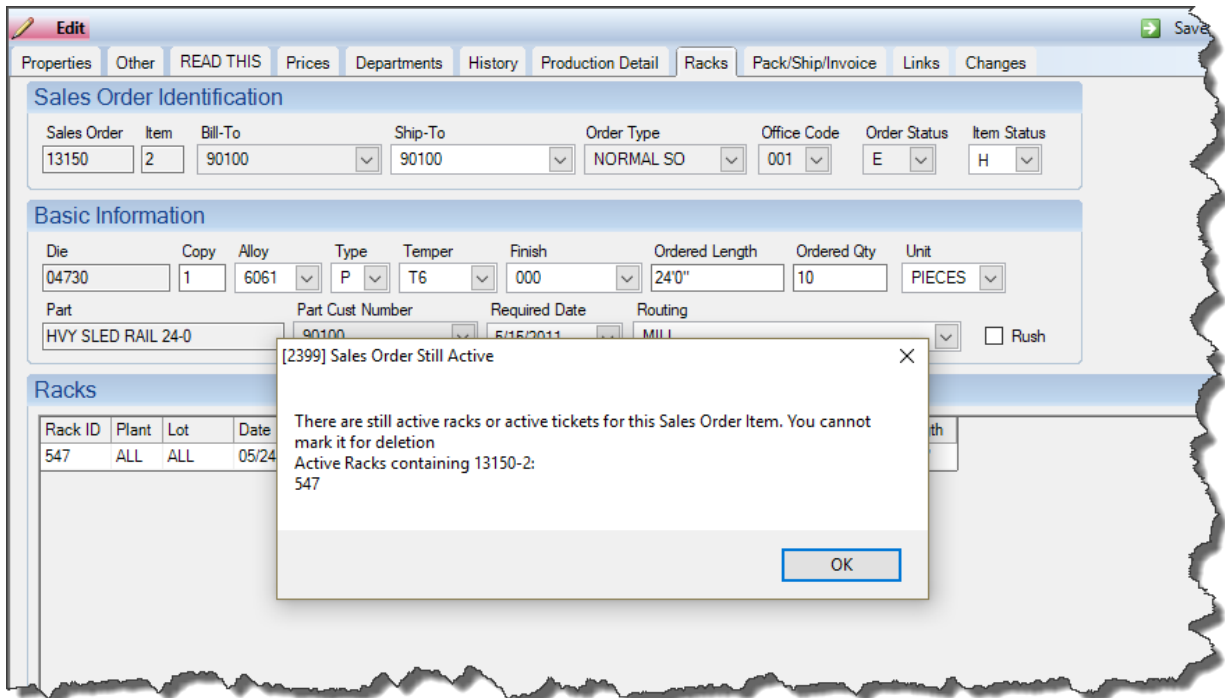


- Once you have saved your work and you open the related screen, the Maintain Dies screen in this example, you will see that your newly designated fields are now required:

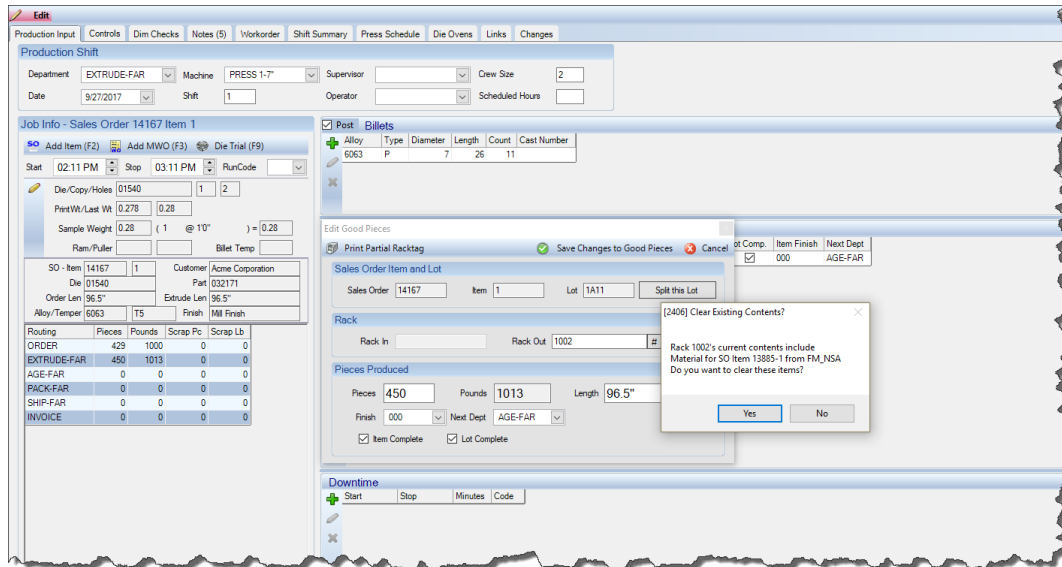


- A new report is available called [Required Fields](#) so that you will be able to see a list of all the fields that are being required (other than the standard fields that are already required).
- ***[WL #3] When changing the status of an item to "H" (complete), alert/stop the user if there are active racks or tickets in process for that item (with password override)**

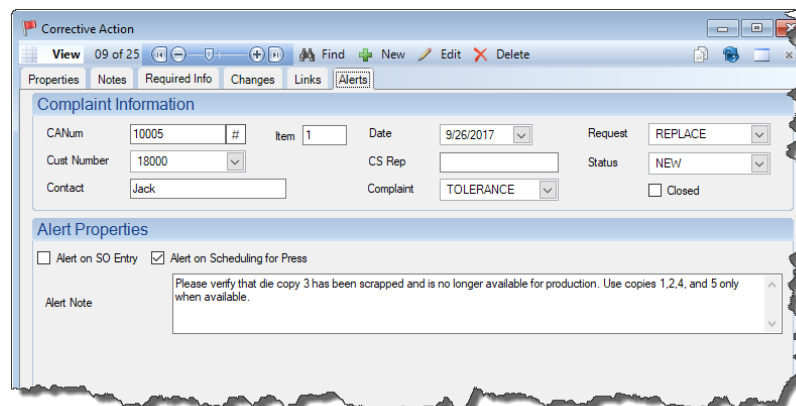
- This new feature involves two new configuration settings: gCheckBeforeStatusH and gCheckBeforeStatusHPassword
- These settings are found under the User Interface category
- gCheckBeforeStatusH is defaulted to 'NO' and will have to be set to 'Yes' to engage this feature.
- The password override is optional, but must be filled in if you want a user to be able to change an Item to 'H' when gCheckBeforeStatusH would ordinarily prevent it.



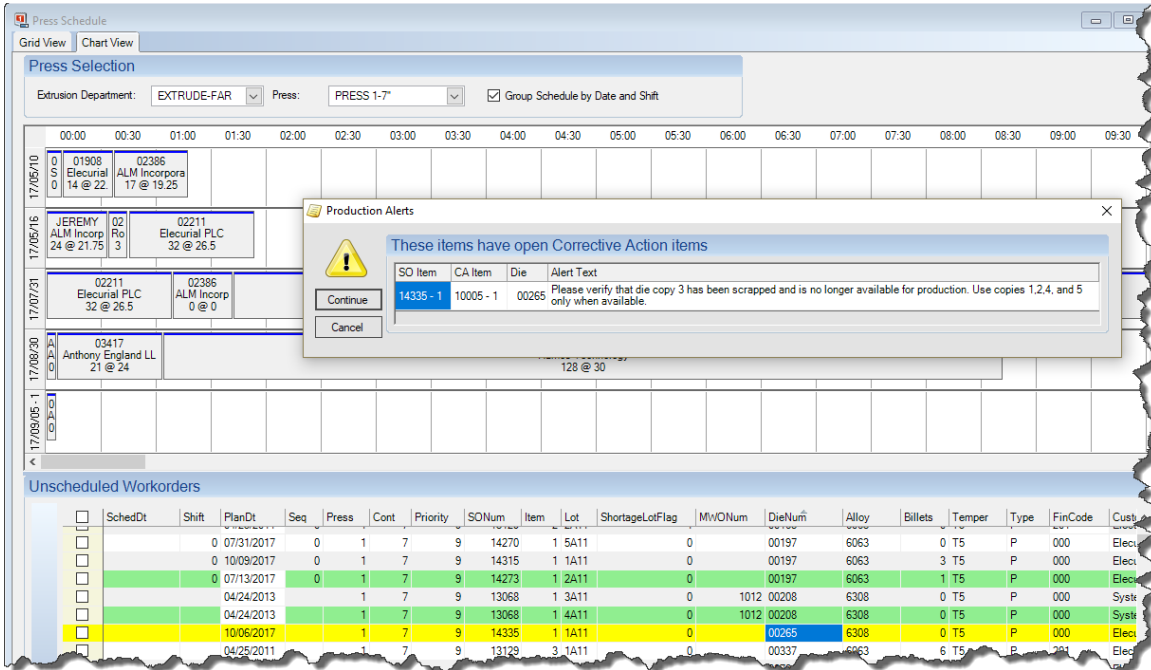
- ***[WL #6] When adding to a rack from extrusion, allow simultaneous emptying of existing contents.**
 - This feature requires that the new Production configuration setting gAskToClearRack is set to 'Yes'. The default setting is 'NO'.
 - If you are adding extrusion production to a rack that still reflects that it contains production from a downstream department, the user will be asked if they would like to clear the previous contents of the rack.



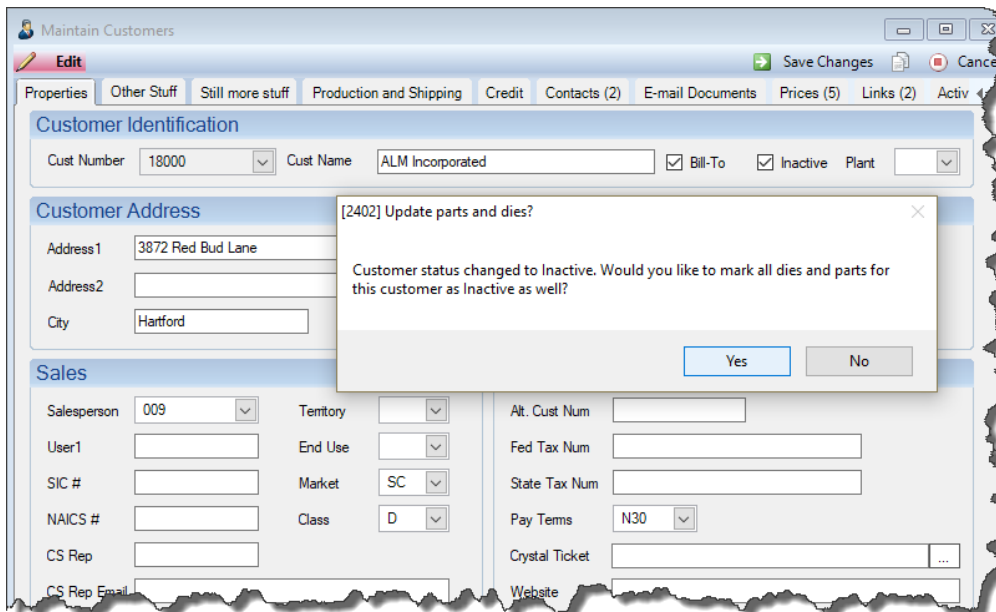
- ***[WL #7] When posting press production, make sure that the alloy and alloy type of the specified cast number matches the alloy and alloy type of the selected billet.**
 - This feature requires that the new Production configuration setting gProdCheckCastNumber is set to 'Yes', the default value is 'No'.
- ***[WL #8] Alert the user if there are open corrective action items against a die when entering a new order for that die or when scheduling the die for production.**
 - There is a new tab on the Corrective action screen called 'Alerts' that will allow you to specify whether you want an Alert at Order Entry or Scheduling at the Press, or both.
 - You create your own custom notification for the alert, as seen below:



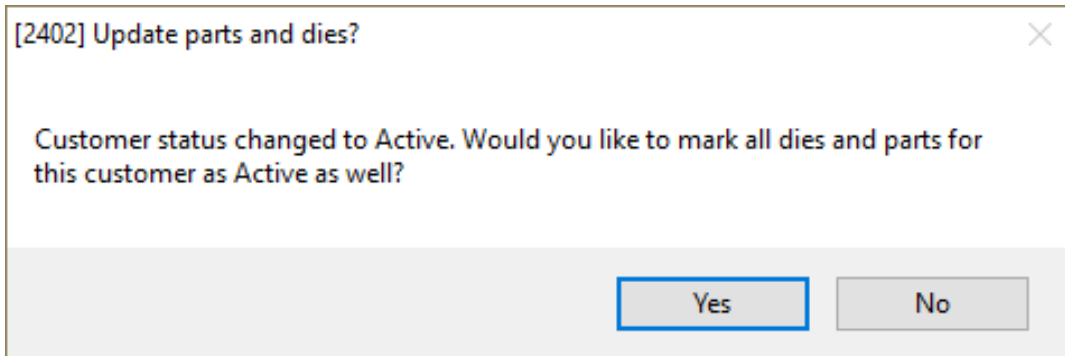
- In the example on the previous page, we have a Corrective Action containing a Die number, and we want to display the custom message anytime the Die is present on an Item when we are scheduling the press, like below:



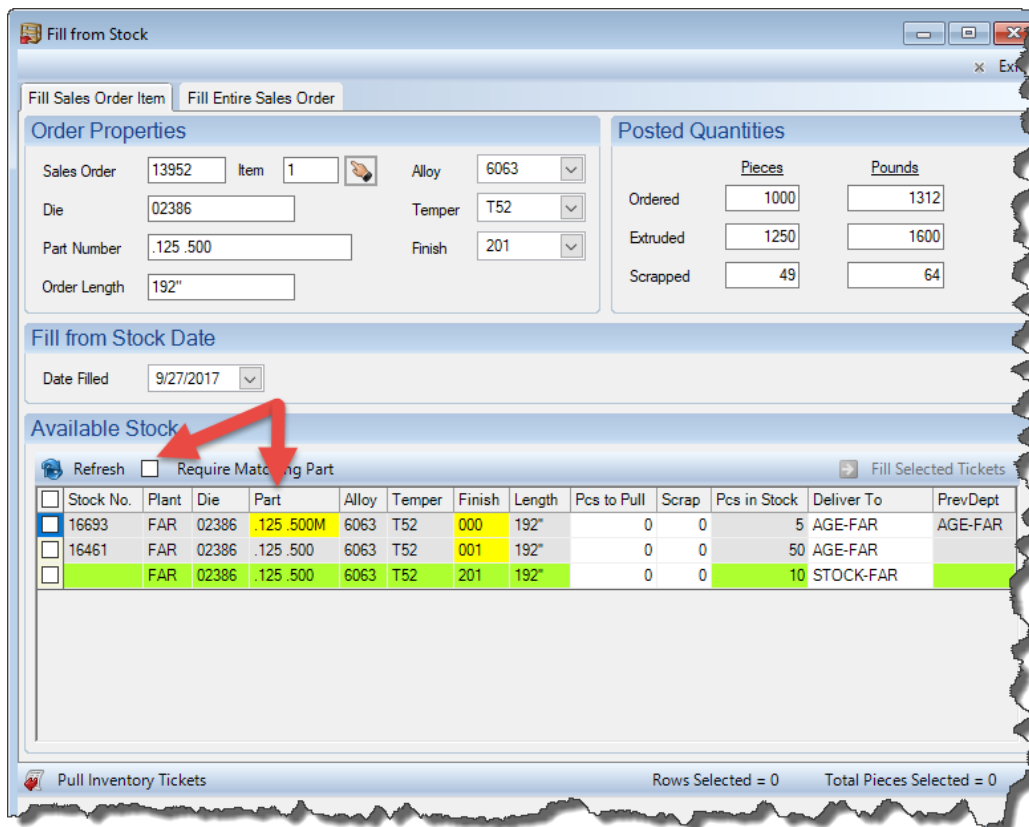
- ***[WL #11] When marking a customer as inactive, selectively allow all of that customer's dies and/or parts to be made inactive as well.**

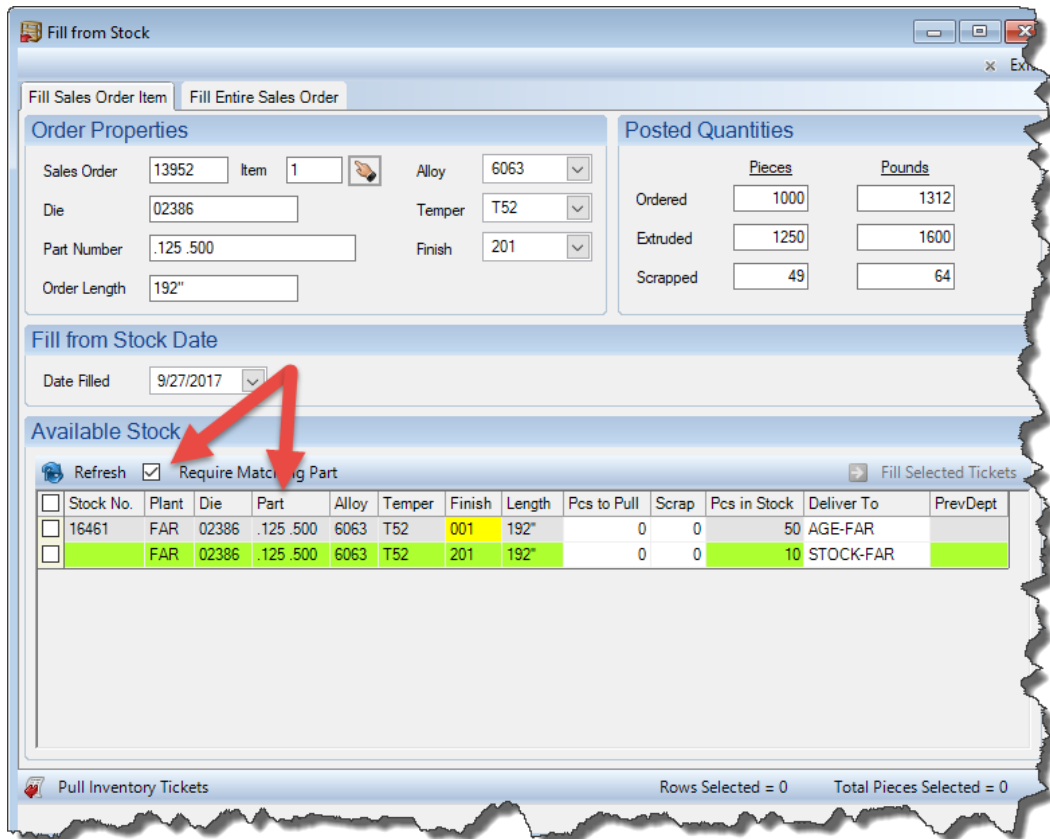


- Conversely, if you mark an inactive Customer back to Active, EPICS will ask if you would like to activate the associated parts and dies.



- ***[WL #12] Allow fill from stock screen to match on part number as well as standard attributes.**
 - There is a new checkbox on the Fill from Stock screen called 'Require Matching Part'.
 - When flagged, it will only show matching stock that contains the same part number as the Order Item you are filling to.

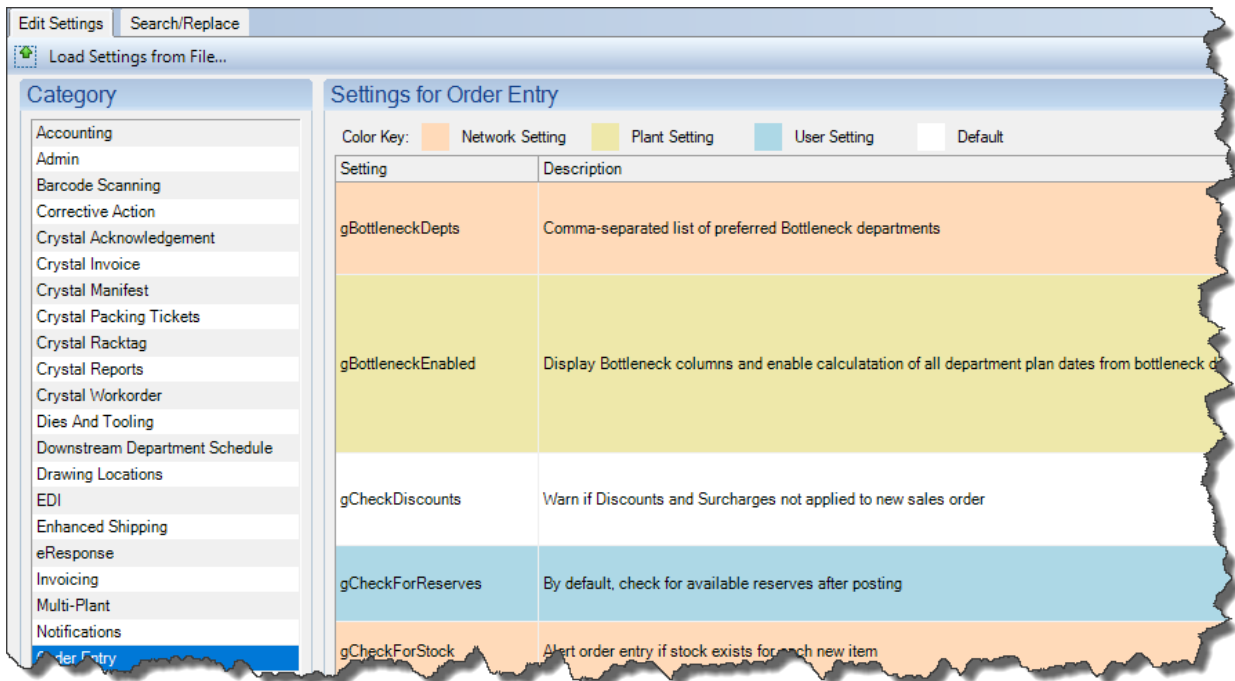




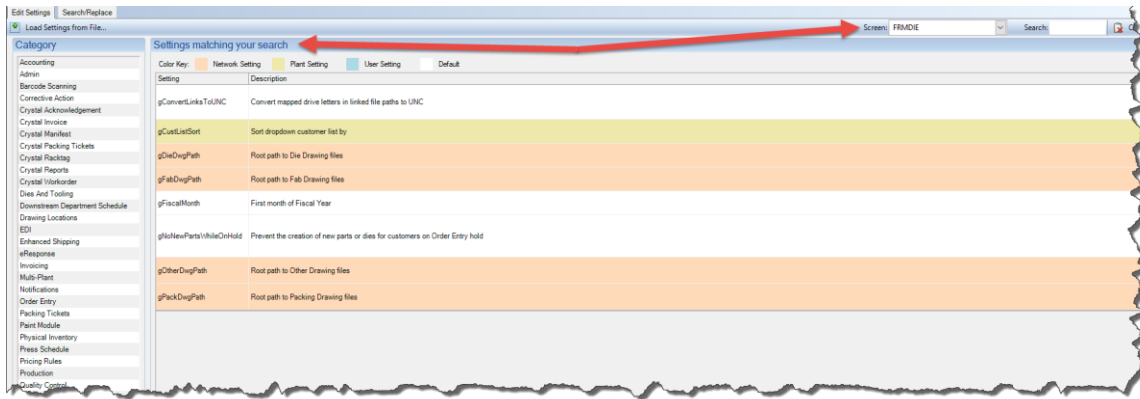
- ***[WL #14] When copying an existing part to create a new part, copy all notes and alerts from the old part to the new part as well.**
- ***[WL #15] When items are rescheduled, add an entry to the item's change log. Also record schedule additions and deletions.**

Sales Order Change Log						
Date/Time	User ID	Column Changed	Old Value	New Value	Long Description	
09/27/2017 04:14 PM	JASON	SchedDt	9/21/2017	9/27/2017	Lot 1A11 Rescheduled for Press 1 on 9/27/2017 Shift 1	
09/21/2017 10:00 AM	MARIAH	SchedDt	9/21/2017	9/21/2017	Lot 1A11 Rescheduled for Press 1 on 9/21/2017 Shift 1	
09/21/2017 10:00 AM	MARIAH	SchedDt		9/21/2017	Lot 1A11 Added to schedule for Press 1 on 9/21/2017 Shift 1	
02/27/2017 02:54 PM	MARIAH				Department EXTRUDE-FAR Added	
01/19/2017 09:56 AM	MARIAH	CompleteFlag	1	0	Department PULLED Changed CompleteFlag from '1' to '0'	
01/19/2017 09:56 AM	MARIAH				Department EXTRUDE-FAR Deleted	
01/12/2017 01:55 PM	MARIAH	Lot			Item 1: Created new Work Order for Lot 1A11	

- Prevent ready-to-ship bundles from filling an item beyond its shipping tolerance (with password override).
 - This feature takes advantage of the existing Packing Ticket settings gPackMaxWtLimit and gPackOverridePassword and now enforces them with the same behavior when filling packed bundles from stock.
- Add ReqDt (requested ship date) to information that appears when hovering over items on Chart View of schedule screen.
- When opening Chart View of schedule screen, always use the chart interval that was last selected by the user.
- Add a line to report history when a report is started from a user-defined ribbon button.
- When importing sales orders from CSV file, ignore extra spaces before and after OrdUnit column.
- Add color coding to the EPICS Config screen to highlight settings with non-default value.
 - This makes use of the new User Interface configuration setting gShowConfigColors which is set to 'Yes' by default.



- Add screen search function to EPICS Config to find settings that affect each screen including new Help/Identify Config Settings function.



- Add "Clear Screen States" button to the Manage EPICS Users screen to reset screen sizes and locations for any user to their defaults.
- Add warnings when saving a die with a "Rate (Lb/Hour)" value that violates Dies and Tooling gWtPerHrMin and gWtPerHrMax configuration settings.
- When racks are manually deleted or cleared, show change in SOChangeLog for all affected items.
- Add config settings for default scrap and butt lengths for new die copies.
 - The Dies and Tooling configuration settings for gDefaultButtLength, gDefaultFrontScrap, and gDefaultRearScrap allow you to set the default values that will be entered when creating a new Die Copy if those fields are left blank.
- Prevent cancelled items (status 'X') from being filled from stock.
- Save changes and deletions of sales order notes and item notes to SOChangeLog (like V8).
- When adding a variable charge to a posted item, ask user if they want to add this charge to all other items on the order (like V8).
- Add DieVolumeWt column to die copy to store total weight of aluminum held by all ports, pockets, and cavities of the die.

- Fix: Eliminate error when editing a ticket with a null DtPack value
- Fix: Do not round press hours when calculating weight/hour on history tab of die copy screen
- Fix: Eliminate unhandled exception when clicking checkbox to select all rows on "Shortages" tab
- Fix: Allow deletion of first notification in list
- Fix: When changing ordered length on posted item, update pieces and weight of first workorder if it has not yet been printed
- Fix: Improve handling when posting scrap from outside processor
- Fix: On Production screen, correctly process input when department is configured differently for good pieces/weight and scrap pieces/weight
- Fix: Eliminate error when using copy/paste on report maintenance screen
- Fix: Calendar events unable to delete after changes were made
- Fix: Calendar recurring events not applying to Sunday

As always, we are very thankful for all of the feedback from you, our valued customer. We take your input very seriously as we strive to continue to provide you with the premiere extrusion software.

AEC Happenings

Foy Inc is a proud member of the AEC. We greatly appreciate the many wonderful contributions they make to the aluminum extrusion industry. Here are a few things coming up related to the AEC:

- Recently, the AEC replaced a survey called 'Key Indicators' with a revised survey called 'Press Productivity Survey'. In the words of the AEC, their objective in doing this is as follows:

“The AEC Press Productivity Survey is conducted to quantify the press production characteristics of the AEC membership. The ultimate purpose of the study is to provide

members with benchmarking information that they can use to compare their operations with those of their peers in the industry on an aggregate basis, in order to pinpoint strengths, weaknesses and improvement opportunities.”

This survey should provide extruders with very valuable feedback and help them to measure their own performance compared to others. We highly recommend participation. It is important to keep in mind that the survey is anonymous and the data is handled by an independent third party who maintains the security and privacy of that data.

We would like to make it as convenient as possible for our customers who are members of the AEC to participate in this valuable survey the next time it is available. We have created a report called [AEC Press Productivity Report](#) that will act as a worksheet to gather the data out of EPICS that you would need to fill out the survey. We have also added a new database field in EPICS V9 to accommodate the survey. You will find this on the Departments and Machines screen for the Extrude department under the Press Settings section, and it is called 'Install Date'. You can download and run the report now, and see for yourself the type of valuable data the survey is collecting.

Be sure to visit the [AEC Members Website](#) for more information.

- Jason Naff, Foy Inc's Vice President of Customer Service, will be speaking at the upcoming Sales & Marketing Workshop on October 17th. Jason will discuss the ways a well-designed Manufacturing Execution System (using EPICS as an example) can help extrusion companies become more efficient and profitable.
- For more information about the AEC or upcoming events, visit their [website](#) or contact them through the information below:



ALUMINUM EXTRUDERS COUNCIL
Aluminum Extrusion: Shaping Solutions Together

1000 N Rand Rd, Suite 214
Wauconda, IL 60084
847/526-2010
Fax : 847/526-3993
mail@aec.org

EPICS Training Opportunities

Be sure to have your EPICS Administrator and key users trained thoroughly on EPICS V9.

EPICS classroom training sessions are held at the Foy Inc offices in Farmersville, Texas. The next available V9 classes are scheduled for **Nov 13-16, Jan 15-18, and Feb 12-15**. You can always view training class availability and cost information on our [Training Classes](#) webpage.



If you are interested in a two-day Reports training class working with the EPICS database, please let us know by calling 972-782-7282 or emailing us at info@foyinc.com. We schedule the Reports classes on demand.



EPICS Customer List

*On any given day
EPICS is helping over 15,000 people
at 100 extrusion plants around the world.*

Aacoa Extrusions – Niles, Michigan
Aerolite Extrusion – Youngstown, Ohio
Almag Aluminum Inc. – Brampton, Ontario
Almax Aluminium – Brisbane, Australia
Altec – Jeffersonville, Indiana
Aluminio de Baja California (ABC) – Tijuana, Mexico
Aluminio de Centro América – San Salvador, El Salvador
Aluminum Extrusions Inc – Senatobia, Miss.
American Aluminum Extrusions – Canton, Ohio
American Aluminum Extrusions – Beloit, WI
American Aluminum Extrusions – Roscoe, Illinois
Anaheim Extrusions (UMEX) – Anaheim, California
APEL Extrusions Ltd. – Calgary, Alberta
APEL Extrusions Ltd. – Coburg, Oregon
Apex Aluminum Extrusions – Langley, BC, Canada
Arch Aluminum – Miami, Florida
Architectural & Metal Systems – Cork, Ireland
Ascend Custom Extrusions – Wylie, Texas
Astrex Inc – Lake Shore, Ontario
Benada Aluminum – Sanford, Florida
Bristol Aluminum – Levittown, Pennsylvania
Briteline Extrusions – Summerville, S. Carolina
BRT Extrusions – Niles, Ohio
CanArt – Brampton, Ontario
CanArt – Windsor, Ontario
Capral Extrusions – Angaston, Australia
Capral Extrusions – Penrith, Australia
Central Aluminum – Columbus, Ohio
Claridge Products – Harrison, Arkansas
Crown Extrusions - Chaska, Minnesota
Gateway Extrusions, Ltd – Union, Missouri
DeeZee, Inc – Des Moines, Iowa
Extruders - a division of Tower – Wylie, Texas
Extrudex – Weston, Ontario
Extrudex – Bernières, Quebec
Extrudex – North Jackson, Ohio
FISA – Guayaquil, Ecuador
Frontier Aluminum – Corona, California
G. James – Brisbane, Australia
G. James – Sydney, Australia
Hulamin – Pietermaritzburg, South Africa
Hulamin – Capetown, South Africa
Hulamin – Olifantsfontein, South Africa
Independent Extrusions (INEX) – Hamilton, New Zealand
Independent Extrusions (INEX) – Brisbane, Australia
Independent Extrusions (INEX) – Melbourne, Australia
International Extrusions – Garden City, Michigan
International Extrusions (UMEX) – Waxahachie, Texas
Jalex – Kingston, Jamaica
Keymark Corporation – Fonda, New York
Keymark Corporation – Lakeland, Florida
Keymark Corporation – Orlando, Florida
MI Metals, Inc - Smyrna, Tennessee
MI Metals, Inc – Millersburg, Pennsylvania
MI Metals, Inc – Oldsmar, Florida
MI Metals, Inc – Prescott Valley, Arizona
MI Windows and Doors – Carrollton, Texas
Michigan Extruded Aluminum – Jackson, Michigan
Midwest Aluminum – Withee, Wisconsin
Nanshan America – Lafayette, Indiana
Nigalex – Lagos, Nigeria
Non-Ferrous Extrusion – Houston, Texas
Oldcastle Building Envelope – Midway, Tennessee
Oldcastle Building Envelope – Terrell, Texas
Orrvilon (Holtec) – Orrville, Ohio
Patrick Metals (UMEX) – Mishawaka, Indiana
Pennex – Leetonia, Ohio
Pennex – Wellsville, Pennsylvania
Perfiles de Aluminio.– San Juan, Puerto Rico
Ply Gem Extrusion– Bryan, Texas
Postle Aluminum – Cassopolis, Michigan
Press Metals – Cumming, Georgia
Pries Enterprises – Independence, Iowa
PT Alumindo Perkasa – Jakarta, Indonesia
PT Indal – Surabaya, Indonesia
Profile Extrusions – Rome, Georgia
Profile (RJS Precision Ext.) – Phoenix, Arizona
Schimmer Metal – Bangkok, Thailand
Selaco Aluminium – Johar, Malaysia
Service Center Metals – Prince George, Virginia
Shoals Extrusion – Florence, Alabama
Sierra Aluminum – Fontana, California
Sierra Aluminum – Riverside, California
Silver City Aluminum -- Taunton, Mass
Spectra Aluminum – Bradford, Ontario
Star Extruded Shapes - Canfield, Ohio
Sun Valley - Los Angeles, California
Superior Extrusion – Gwinn, Michigan
Superior Metal Shapes – Chino, California
Tecnoglass – Barranquilla, Columbia
Taber Extrusions – Gulfport, Mississippi
Taber Extrusions – Russellville, Arkansas
Tifton Aluminum Extrusions – Tifton, Georgia
Tri–City Extrusion – Bristol, Tennessee
Tubelite – Reed City, Michigan
Universal Molding (UMEX) – Downey, California
Vitex – Franklin, New Hampshire
Wakefield-Vette – Pelham, New Hampshire
Wakefield-Vette – Withee, Wisconsin
Western Extrusion – Carrollton, Texas
Wolverine Tube Inc – Decatur, Alabama
Zarbana Industries – Columbiana, Ohio

Foy Inc
111 Farmersville Pkwy, Suite 100
Farmersville, TX 75442
Phone: 972-782-7282
Fax: 972-782-7130

Web: www.foyinc.com
General Information: info@foyinc.com
Help: help@foyinc.com

Jim Foy: jim@foyinc.com
John Stenger: john@foyinc.com
Scott Wilson: scott@foyinc.com
Jason Naff: jason@foyinc.com
Stacy Foley: stacy@foyinc.com
Mariah Zagorsky: mariah@foyinc.com
Stephan Stenger: stephan@foyinc.com