



FOY'S EPICS EVENTS

In this issue:

EPICS USER CONFERENCE, APRIL 14-17 IN SAVANNAH, GEORGIA	2
EPICS CASTHOUSE MODULE	3
SHARE MACHINES WITH MULTIPLE DEPARTMENTS	5
SMTP EMAIL INTERFACE	5
EPICS UPDATE 9.17	7
ONLINE AND IN-PERSON EPICS AND REPORT-WRITING TRAINING	11
FOY INC HOLIDAY HOURS.....	12
EPICS CUSTOMER LIST	13

EPICS User Conference, April 14-17 in Savannah, Georgia



Join us in Savannah, Georgia for the 26th annual EPICS User Conference!

We will meet at the Hyatt Regency Savannah on the riverfront of beautiful and historic downtown Savannah. Conference sessions will be Monday and Tuesday with the optional Training Day on Wednesday. Be sure to come say hello to everyone at the Sunday evening welcome reception. Also enjoy a paddlewheel riverboat dinner cruise Monday evening aboard the Georgia Queen.

Come and meet with your peers, exchange ideas, and become better at what you do. You will connect with people who know and understand your work (how rare is that?), and you will be your company's representative at one of the largest gatherings of aluminum extruders in North America. Come meet the Foy Team and see all the new features added to EPICS in the past year. [See details.](#)

Bring your ideas and help make EPICS even better!

[Click here for more information and for registration.](#) **Register by March 8th** to get the Early Bird discount. Prices increase after March 8th.

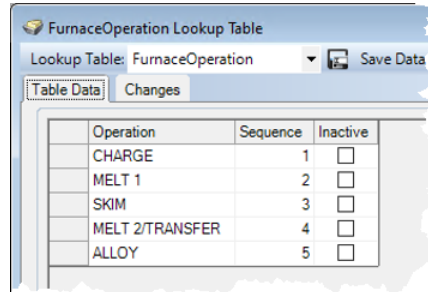
The Hyatt Regency Savannah hotel is offering a special conference room-rate available until **March 20th**, or until the rooms sell out. *Please reserve your rooms as soon as possible.* [Click here to reserve your rooms.](#) But please remember! The User Conference registration deadline is March 8th.

We look forward to seeing you in Savannah!

EPICS Casthouse Module

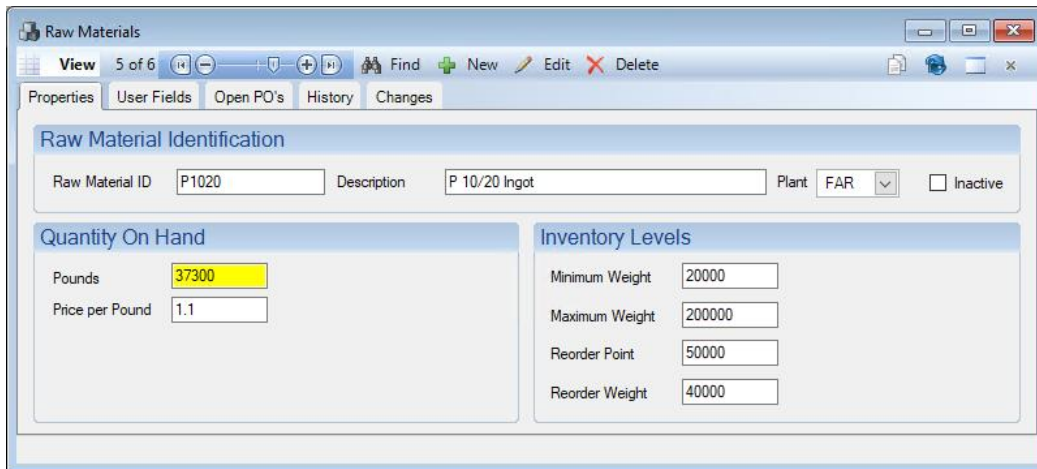
Introduced with V9.17, the EPICS Casthouse Module seamlessly adds extensions to existing EPICS screens to support Casthouse production and log/billet sales. Casthouse operations in EPICS are divided into three distinct stages: Charging, Casting, and Disposition. EPICS has new features designed specifically to support each of these steps.

The preliminary setup begins with setting the sequence of events involved in the furnace operation. Similar to a production routing, it defines which furnace operations are needed and the sequence they occur. This is done with the new FurnaceOperations lookup table.



Operation	Sequence	Inactive
CHARGE	1	<input type="checkbox"/>
MELT 1	2	<input type="checkbox"/>
SKIM	3	<input type="checkbox"/>
MELT 2/TRANSFER	4	<input type="checkbox"/>
ALLOY	5	<input type="checkbox"/>

Next, from the new Raw Material screen, a record for raw material used in the Casthouse is defined. This will include things like prime aluminum, extrusion scrap, hardeners, and all other materials that are added to the furnace during charging/alloying.



Raw Materials

View 5 of 6 Find New Edit Delete

Properties User Fields Open PO's History Changes

Raw Material Identification

Raw Material ID: P1020 Description: P 10/20 Ingot Plant: FAR Inactive

Quantity On Hand

Pounds: 37300 Price per Pound: 1.1

Inventory Levels

Minimum Weight: 20000 Maximum Weight: 200000 Reorder Point: 50000 Reorder Weight: 40000

Once a furnace load is ready for casting, the metal is handed off to the casting department and all of its downstream departments. These departments and machines must be created before you can create production routings to support Casthouse orders. Version 9.17 includes four new department categories to support Casthouse orders: Log Casting, Log Processing, Log Cutting, and Log Inventory. As with other departments, user permissions may be assigned to each of these departments.

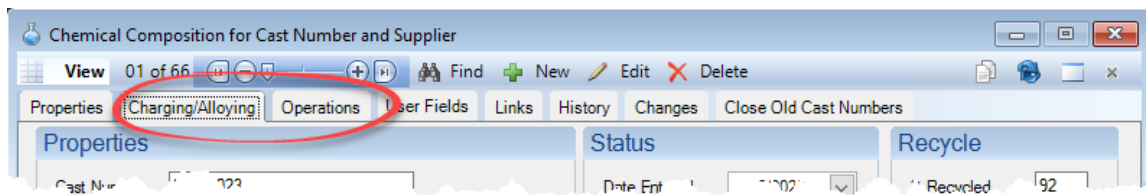
With departments in place, production routings for creating new logs and billets can be created from the Routings screen. Similar to a standard extrusion routing, all routings must begin with the Order Entry department and terminate with either Pack, Ship, and Invoice, or by putting into stock or extrusion inventory.

The Order Entry screen is used to create new sales orders for log or billet. Two new Order Types are available. They are type "L" which can be used for log sales and type "B" for billet sales. These provide a way to easily identify log and billet orders and may be used for reports and any other data analysis.

Parts records may be created and used at Order Entry. There are also two new categories for Parts: LOG and BILLET. Part records streamline the Order Entry process. This may be especially helpful for new Casthouse parts. They can be created by personnel familiar with the special requirements of the log or billet.

Once new sales orders are created, the standard production process follows. An order acknowledgment is printed, and jobs are scheduled for production using the Department Schedule screen. Each department backlog is available on the Backlog screen.

For the **Charging stage**, the Chemical Composition screen is used to record the data collected, all of which is saved with the cast number that is assigned to the furnace charge. New tabs are included for "Charging/Alloying" and "Operations" (from the FurnaceOperation lookup table).



The Production screen is used for the **Casting stage**. This includes all production departments in the routing of each log or billet item produced in the plant such as casting, homogenization, cropping, and cutting. Departments in the LOG CASTING category pull data from the chemical composition record created for the specified cast number created in the charging stage and create virtual "racks" of logs for one or more sales order items. Departments in the LOG PROCESSING category can include any log processing steps that do not alter the length of the logs that were cast. These departments remove logs from the virtual racks produced in the previous production step and produce new virtual racks containing the processed logs for the specified sales order items. Departments in the LOG CUTTING department include cropping departments that alter the length of logs and billet cutting departments that produce any number of billets at different lengths from batches of incoming logs.

The **Disposition** stage finalizes the destination of sales orders: They can be bundled and shipped directly to a customer, they can be bundled and placed in stock inventory for later sale, or they can be transferred directly to your extrusion log/billet inventory. The Production screen is used for this step.

Standard processes are used from this point to pack the bundles for shipping to customers or for stock inventory. Orders are shipped and invoiced in the usual manner.

While Casthouse operations is a new feature in EPICS 9.17, including a robust set of features to support the many processes of the Casthouse, standard EPICS screens and procedures have been used as much as possible, providing a familiar setting for the new features.

Share Machines with Multiple Departments

If you have a production machine performing the tasks of multiple departments in the production routing for a single part, that machine can now be shared among those departments. This is most commonly the case with fabrication machines. You may have CNC machines, for example, that cut, punch, debur, and other steps. The ability to share that CNC machine among multiple departments in EPICS greatly simplifies cross-department scheduling and enhances the efficiency of capacity planning.

Machines for Department PUNCH Category FABRICATION

Number	Name	Install Date	Hr/Day	Rate/Hour	Rate Unit	Cost/Hour	Inactive	QC Layout	QC By Lot	QC By Rack	Production Dept	Production Machine
1	punch1		8	400	Pieces	55	<input type="checkbox"/>		<input type="checkbox"/>	<input type="checkbox"/>		
92	CNC-FAR 2		16	180	Pieces	125	<input type="checkbox"/>		<input type="checkbox"/>	<input type="checkbox"/>	CNC-FAR	2

Machine 2 from CNC-FAR department is shared with the Punch department. In the Punch department, it is identified as machine 92.

To share machines, there are three basic steps. First, set configuration setting gAllowSharedMachines to “YES”. Then, on the Departments and Machines screen, choose a department which needs the shared machine, and select the machine from the “Production Dept” drop-down list. Finally, add the machine the Dept Specs tab of the Customer Part screen. This will enable the use of the machine for these parts. Only parts that are set up in this way can use the shared machines for scheduling and production.

Please see the EPICS Help documentation for full details.

SMTP Email Interface



EPICS has robust email features. You can automatically email quotes, acknowledgments, manifests, certs, and invoices to customers the moment those documents are created. If the truck leaves your dock at 3:00 in the morning, your customer will have the shipping manifest and cert already in their inbox when they arrive at their office later that morning.

When documents are emailed, EPICS uses the email client from the workstation where the email was sent. So, if Sheldon in Shipping sends a manifest, the email is sent from his workstation and the customer sees that the email has come from Sheldon, and when

Inga in Invoicing sends a invoice, her email is used and the email comes from Inga. What do you do if you want both emails to come from a single company email account? Well, you install version 9.17 and keep reading.

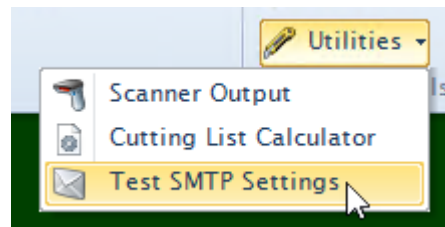
You will find several new configuration settings in this update. Because these involve sending reports, the settings are found in the Crystal Reports category of the Configure screen. Here are the settings...

gEmailSMTPEnabled	Use SMTP settings when emailing Crystal documents
gEmailSMTPPassword	Email SMTP password
gEmailSMTPPort	Email SMTP port
gEmailSMTPSenderBCC	Should emails sent via SMTP include the sending email address as a BCC recipient?
gEmailSMTPServer	Email SMTP server
gEmailSMTPSSEnabled	Use SSL for SMTP connection
gEmailSMTPUserName	Email SMTP user name

This is a task typically performed by your EPICS administrator. We recommend that your EPICS admin start by working with these settings in the User column. In this way, not all users will be affected, only the one used for testing. Once it is configured properly for that one user, it can be applied to other users as needed. If you want to apply this to all users throughout EPICS, apply the settings to the Network column. But you may want to apply this to only select users. In that case, apply the settings in the User column for those users only (select the user from the "User" list on the left, apply the settings to the User column, then click Apply).

As you can see, specific information about your SMTP mail server is needed, such as server name and password. These settings will be familiar to those acquainted with SMTP mail servers. Once the SMTP settings are in place, set gEmailSMTPEnabled to "YES". To test your settings, use the new "Test SMTP Settings" screen found on the Administrator ribbon in Utilities menu.

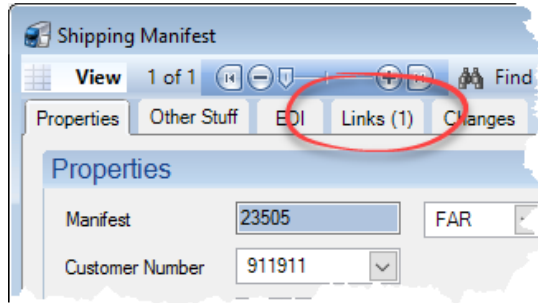
Please see EPICS Help for more details or contact Foy Inc with any questions.



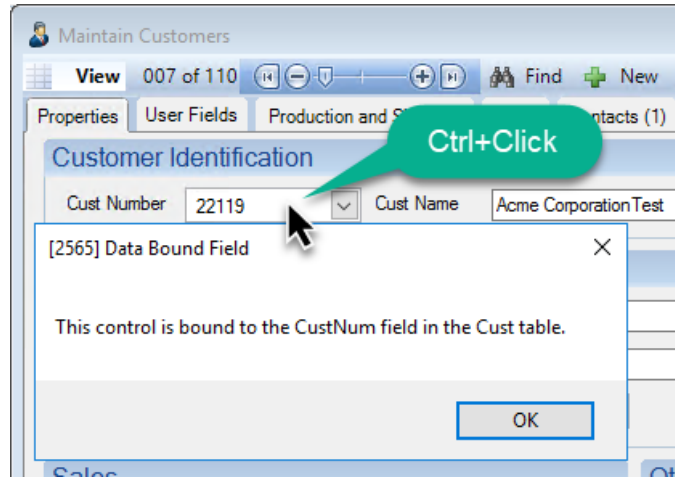
EPICS Update 9.17

Update 9.17 includes three items from wishlist 2023, three items from 2022, one from 2021, and one from 2020. It introduces the new Casthouse Module, the ability to share machines among multiple departments, enhancements to Chemical Composition, enhancements to Downstream Department Scheduling, and many others. Also included are 31 fixes. If you have been waiting for a feature or a fix, there's a good chance it's here.

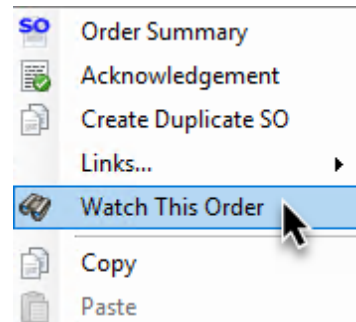
- 2023 WL#4: Create New Orders for Stock Replacement - Added new columns for Press, Routing, and Remaining Weight.
- 2023WL#9: Maintain Manifests - Added Links tab to Maintain Manifests screen. Documents and URLs can now be linked directly to manifest records.



- 2023WL#13: Added the ability to Ctrl+Click on a field on any screen to see which database field it is bound to.
- 2022WL#1: Added option to right-click on Sales Order or Sales Order Item number and choose to "Watch This Order" or "Watch This Item" to receive notifications whenever production is posted.



- 2022WL#2: Preserve original order information when returning a ticket to stock
- 2022WL#18: Adjust Sales Order Prices screen – The Query Builder now includes the Die table.
- 2021WL#15: Production screen, Downstream Department Schedule – Prompt user to choose a rack when selecting a production item from the schedule.
- 2020WL#9: When determining the best ship date for each new item, consider the number of available die copies in calculating the capacity plan for the extrusion department. Uses DieRunLimit and gCapacityUseAvailableCopies with default = NO



- Introducing the [EPICS Casthouse Module](#) to support production and sales of billets and logs
 - Add Raw Materials inventory for casthouse including Purchase Orders and Receivers
 - Add a “Charging/Alloying” tab to the ChemComp screen to keep track of raw materials added to the furnace
 - Add special dies ‘LOG’ and ‘BILLET’
 - Add ‘BILLET’ and ‘LOG’ part categories
 - Add department categories for LOG CASTING, LOG CUTTING, LOG INVENTORY, and LOG PROCESSING
 - Add SOTypeClasses for BILLET and LOG
 - Add FurnaceOperation lookup table to configure steps required to charge the furnace
 - Add an "Operations" tab to the ChemComp screen to record the start, stop and downtime of each step during charging and alloying
- [Allow machines to be shared between departments](#) (typically fabrication departments.)
 - Add ProdDeptNum and ProdMachineNum to the Machine table to support machine sharing
 - Add a dropdown to the machine column when adding department specs to a part to support machine sharing
- Maintain Racks screen - Add new permission “Change Departments” that controls the ability to change Previous or Next Department
- Edit Required Fields screen – For frmShiftProd for Extrusion departments, allow making the Extrusion Info fields (like Ram/Pull speed) required.
- Utilities – Add "[Test SMTP Settings](#)" button to the Utilities menu on the Administrator tab
- Configuration settings – Add new settings to the Reports category to support [SMTP email interface](#).
- Press Schedule – Create an Item Changelog entry when changing the Press number
- Discount and Surcharges - Warn when marking a Discount inactive if it is currently in use on one or more schedules
- Print Ack, Manifest, or Invoice – Warn when emailing documents to customers with incomplete configuration settings for subject and body text
- Print Tickets – When printing multiple new tickets for the same item, send them all to Crystal in the same print job
- ChemComp – Add a History tab (uses new CastHistView)

The screenshot shows a table titled "Screen Permissions" with columns "ScreenName" and "Descrip". The table contains four rows, all with "frmRack" in the "ScreenName" column. The "Descrip" column contains: "Maintain Production Racks", "Allow changing the Previous/Next Depart", "Allow moving items to other racks", and "Allow 'Delete'". The second and third rows are circled in red.

ScreenName	Descrip
frmRack	Maintain Production Racks
frmRack	Allow changing the Previous/Next Depart
frmRack	Allow moving items to other racks
frmRack	Allow 'Delete'

- ChemComp – Add a Change Log tab
- ChemComp – Add an “On Hand” weight field. Update it as billets are received or used for each Cast Number
- Departments and Machines screen – Add “[Use Hot Billet Wt](#)” checkbox to use hot billet weight rather than standard weight
- Maintain Billets screen – New “Hot Lb/inch” or “Hot Kg/mm” to calculate billet lengths and update billet history using that weight for all presses that have “Use Hot Billet Wt” selected on the Departments and Machines screen.

Override	Use Hot Billet Wt	Use Billet
	<input checked="" type="checkbox"/>	
	<input type="checkbox"/>	

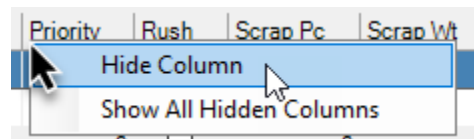
Unit Values

Lb/inch Hot Lb/inch

Price for Metal

Price for Scrap

- Billet PO – Add a changelog for Billet POs and Receivers
- Paint Inventory – Add a changelog for Paint POs and Receivers
- Accessories – Add a changelog for Accessory POs and Receivers
- Invoicing – Add a changelog for Invoices
- Database Info screen – Add ability to change the database password for the “epics” user. This will be a secure password known only to Foy Inc. This password will not be shared with anyone. The same button can also be used to change the epics login password back to its previous value. Carefully read the popup warning message before proceeding.
- Multi-plant – Add “Location” to grids on the Inter-Plant Transfer screen. Support barcode scanning of rack numbers.
- EPICS Notification System is now enabled by default. Can be turned off by setting gEnableNotifications = NO
- Order Inquiry screen – Add “Order Status” to the Sales Order Selection grid
- Downstream Department Schedule - Allow the Machine number for unscheduled items to be changed
- Customer Part Numbers screen – Add CCD to the Die Information grid
- Downstream Department Schedule screen – Add “Next Dept 2”
- Press and Downstream Dept Schedules – Add the ability to right click to hide columns on Schedule screens



9.17 Fixes

- Quote Module – Prevent unhandled exception when opening screen to adjust quote prices
- When splitting items, save order date as date-only (no time component)

- Thumbnail Browser – Fixed error messages related to Notes & Alerts images
- Production screen – Fixed an unhandled exception when selecting the Scan for Available Racks tab without a department selected.
- Report Export – Fixed not being able to export a report to .xlsx format correctly.
- Show All grid – Warn if trying to export more than 255 columns to .XLS format, its column limit. (.XLSX format allows 16,384 columns.)
- Maintain Racks – Prevent showing Inactive Departments in the dropdown list for Previous and Next departments
- Notifications – Only allow sending messages to active users
- Corrective Action – Display missing “Open” checkbox on the “Status” (CAStatus) lookup table
- Screen Layout Designer – Ensured all labels and fields are on the screen when loading from a file
- Report Maintenance – If a report is marked inactive, prevent it from being run using a Quick Access button
- Order Entry – Do not apply inactive Discounts and Surcharges
- Order Entry – If no Sales Order Item is assigned for a Link, set it to “ALL” by default
- Enhanced Shipping – Fixed error when removing a Sales Order item that is on a picklist twice for different destinations
- Enhanced Shipping – Warning when trying to add a ticket to a different picklist
- Press and Downstream Department schedules – Fixed an unhandled exception when swapping to the chart view after grouping items in the grid view
- Press Schedule – Eliminate unhandled exception when loading a schedule that included a null sequence for a scheduled item
- Downstream Department Schedule – When unscheduling an item from the Downstream Schedule, no longer remove the assigned machine
- Downstream Department Schedule, Available Racks tab – Exclude racks marked as "Scrap", "Hold", or "Inactive"
- Production screen – Update all database tables correctly when the same cast number is used by multiple suppliers
- Production screen – Fixed Billet Oven screen sometimes checking the wrong cast number
- Production screen - Fixed tabs becoming visible even when the user didn't have permission for them
- Production screen – Prevent users with READ permission to the Billet Oven tab from editing the Billet Oven contents
- Production screen – When adding an item to a downstream production posting, always prompt the user to select a rack if any exist for that item
- Production screen – On the department schedule tab, show only jobs scheduled for the specified machine
- Packing screen – When selecting a packing crew, show only crews from the currently selected plant

- Adjust Sales Order Prices screen – When resizing the screen, increase the width of the Query Builder boxes to match the new screen size
- Ribbon – Prevent unhandled exception when adding custom buttons to the ribbon
- Ribbon – Added friendlier error message when failing to save a ribbon due to a Windows Permissions error
- Multi-plant, Production screen – If gRestrictRacksByPlant is set to “YES”, include only racks in the current plant in PcReady on the Department Schedule tab
- Packing, Production, Receive from Outside – Show only active departments in the drop-down for “Charge To” for scrap

Online and In-person EPICS and Report-Writing Training

EPICS User Training is available in-person at our training facility in Farmersville, Texas as well as online. In this four-day class, trainees work through the entire EPICS interface. The next in-person classes meet February 19-22 and June 17-20. Online classes are scheduled for January 22-25, March 25-28, and May 20-23.

Knowledge
is
power!



For online classes, a good internet connection and dual monitors are essential. One monitor is needed for watching the instructor's screen and another for running EPICS. This could be individuals in their homes or offices, or it could be several people in a conference room with a single large screen with speakers to see and hear the instructor and with individual PCs for each trainee. Trainees will connect via VPN to a training database on a Foy Inc server.

This is a great opportunity to provide training to your administrators and key users. Training is valuable not only for new users, but also as a refresher for long-time EPICS users. Much has been added to EPICS V9 in the past few years, and there are probably other things that have been forgotten. Take this opportunity to see the full scope of what EPICS has to offer.

Also available is Report Writing training. This is a novice-level class which uses Crystal Reports and the EPICS database to teach how to create and edit reports used in EPICS. Currently, there is still availability in an online class scheduled for January 15-16. [Please see the Foy Inc website for details.](#)

If you are interested in EPICS User Training or in Report Writing Training, please call us at 972-782-7282 or email us at info@foyinc.com.

Foy Inc Holiday Hours

Foy Inc offices will be closed for the holidays December 25 – January 1. We will be monitoring the Help desk for emergencies. Please send email to help@foyinc.com.

The Foy Inc Team sincerely wishes you a Merry Christmas and a Happy New Year!



EPICS Customer List

*On any given day EPICS is helping more than 15,000 people
at 100+ extrusion plants around the world.*

Almag Aluminum Inc. – Brampton, Ontario
 Almag Aluminum Inc– Florence, Alabama
 Almax Aluminium – Brisbane, Australia
 Altec – Jeffersonville, Indiana
 Altus NZ – Hamilton, New Zealand
 Aluminio de Baja California (ABC) – Tijuana, Mexico
 Aluminios de Puerto Rico – Humacao, Puerto Rico
 Aluminio de Centro América – San Salvador, El Salvador
 Aluminum Extrusions Inc – Senatobia, Miss.
 Aluminum Insights – Goshen, Indiana
 American Aluminum Extrusions – Canton, Ohio
 American Aluminum Extrusions – Beloit, WI
 American Aluminum Extrusions – Roscoe, Illinois
 Anaheim Extrusions (UMEX) – Anaheim, California
 APEL Extrusions Ltd. – Calgary, Alberta
 APEL Extrusions Ltd. – Coburg, Oregon
 APEL Extrusions Ltd. – Phoenix, Arizona
 Apex Aluminum Extrusions – Langley, BC, Canada
 Architectural & Metal Systems – Cork, Ireland
 Astrex Inc – Lake Shore, Ontario
 Benada Aluminum – Sanford, Florida
 Bonnell Aluminum– Niles, Michigan
 Bristol Aluminum – Levittown, Pennsylvania
 Briteline Extrusions – Summerville, S. Carolina
 BRT Extrusions – Niles, Ohio
 CanArt – Brampton, Ontario
 CanArt – Windsor, Ontario
 Capral Extrusions – Angaston, Australia
 Capral Extrusions – Penrith, Australia
 Claridge Products – Harrison, Arkansas
 Crown Extrusions - Chaska, Minnesota
 DeeZee, Inc – Des Moines, Iowa
 Dependable Anodizing – Markham, Ontario
 Extrudex – Weston, Ontario
 Extrudex – Bernières, Quebec
 Extrudex – North Jackson, Ohio
 Extrum – Chaloma, Honduras
 Extrusions, Inc – Fort Scott, Kansas
 FISA – Guayaquil, Ecuador
 G. James – Brisbane, Australia
 G. James – Sydney, Australia
 Gateway Extrusions, Ltd – Union, Missouri
 Hulamin – Pietermaritzburg, South Africa
 Hulamin – Capetown, South Africa
 Hulamin – Olifantsfontein, South Africa
 Independent Extrusions (INEX) – Hamilton, New Zealand
 Independent Extrusions (INEX) – Brisbane, Australia
 Independent Extrusions (INEX) – Melbourne, Australia
 International Extrusions – Garden City, Michigan
 International Extrusions (UMEX) – Waxahachie, Texas
 Iowa Aluminum – Albia, Iowa
 Jordan Aluminum Company – Memphis, Tennessee
 Keymark Corporation – Fonda, New York
 Keymark Corporation – Lakeland, Florida
 Keymark Corporation – Orlando, Florida
 Mayne Inc. – Langley, British Columbia
 Merit Aluminum – Corona, California
 MI Metals, Inc. – Millen, Georgia
 MI Metals, Inc – Oldsmar, Florida
 MI Metals, Inc – Prescott Valley, Arizona
 MI Metals, Inc - Smyrna, Tennessee
 MI Windows and Doors – Carrollton, Texas
 Michigan Extruded Aluminum – Jackson, Michigan
 Midwest Aluminum – Withee, Wisconsin
 Mountain Ridge Metals – Millersburg, Pennsylvania
 Nanshan America – Lafayette, Indiana
 Nigalex – Lagos, Nigeria
 Non-Ferrous Extrusion – Houston, Texas
 Oldcastle Building Envelope – Midway, Tennessee
 Oldcastle Building Envelope – Terrell, Texas
 Orrvilon (Holtec) – Orrville, Ohio
 Paramount Extrusions Company – Paramount, California
 Patrick Metals (UMEX) – Mishawaka, Indiana
 Peerless Products – Fort Scott, Kansas
 Pennex – Leetonia, Ohio
 Pennex – Wellsville, Pennsylvania
 Perfiles de Aluminio – San Juan, Puerto Rico
 Ply Gem Extrusion– Bryan, Texas
 Postle Aluminum – Cassopolis, Michigan
 Press Metals – Cumming, Georgia
 Pries Enterprises – Independence, Iowa
 PRL Aluminum – City of Industry, California
 PT Alumindo Perkasa – Jakarta, Indonesia
 PT Indal – Surabaya, Indonesia
 Profile Extrusions – Rome, Georgia
 Profile (RJS Precision Ext.) – Phoenix, Arizona
 Samwoo America – Tijuana, Mexico
 Schimmer Metal – Bangkok, Thailand
 Selaco Aluminium – Johar, Malaysia
 Service Center Metals – Prince George, Virginia
 Sierra Aluminum – Fontana, California
 Sierra Aluminum – Riverside, California
 Silver City Aluminum -- Taunton, Mass
 Spectra Aluminum – Bradford, Ontario
 Star Extruded Shapes - Canfield, Ohio
 Sun Valley - Los Angeles, California
 Superior Extrusion – Gwinn, Michigan
 Superior Metal Shapes – Chino, California
 Taber Extrusions – Gulfport, Mississippi
 Taber Extrusions – Russellville, Arkansas
 Tecnoglass – Barranquilla, Columbia
 Tower Extrusions – Hensley – Wylie, Texas
 Tower Extrusions – Martinez – Wylie, Texas
 Tifton Aluminum Extrusions – Tifton, Georgia
 Tri–City Extrusion – Bristol, Tennessee
 Tubelite – Reed City, Michigan
 Universal Molding (UMEX) – Downey, California
 Veer Aluminium – Olifantfontein, South Africa
 Vitex – Franklin, New Hampshire
 Wakefield-Vette – Pelham, New Hampshire
 Wakefield-Vette – Withee, Wisconsin
 Western Extrusion – Carrollton, Texas
 Wolverine Tube Inc – Decatur, Alabama
 Unique American Aluminum – Middlesex, New Jersey
 Zarbana Industries – Columbiana, Ohio

Foy Inc, 111 Farmersville Pkwy, Suite 100
Farmersville, TX 75442
www.foyinc.com

General Information:
 Help:

info@foyinc.com
help@foyinc.com

Stacy Foley: stacy@foyinc.com
 Jim Foy: jim@foyinc.com
 John Stenger: john@foyinc.com
 Stephan Stenger: stephan@foyinc.com
 Scott Wilson: scott@foyinc.com
 Mariah Zagorsky: mariah@foyinc.com